



A bright spacious two bedroom town centre apartment
Rowland Place, Northwood, HA6 1AD



Asking Price: £1,800 pcm

A bright spacious two bedroom town centre apartment

Rowland Place, Northwood, HA6 1AD

• ENTRANCE HALL • LIVING ROOM • FITTED KITCHEN • TWO BEDROOMS • BATHROOM • PRIVATE TERRACE • PERMIT PARKING AVAILABLE • FURNISHED

Description

A spacious two double bedroom apartment flooded with natural light and ideally located in the heart of Northwood town centre, within easy reach of local shops, restaurants, and excellent transport links. The property offers bright and modern accommodation throughout, comprising two generous double bedrooms, a spacious reception room, a contemporary fitted kitchen and a stylish bathroom finished to a high standard. The property also benefits from a private terraced area.

** An advance reservation payment of one weeks rent is required to secure the property **

Location

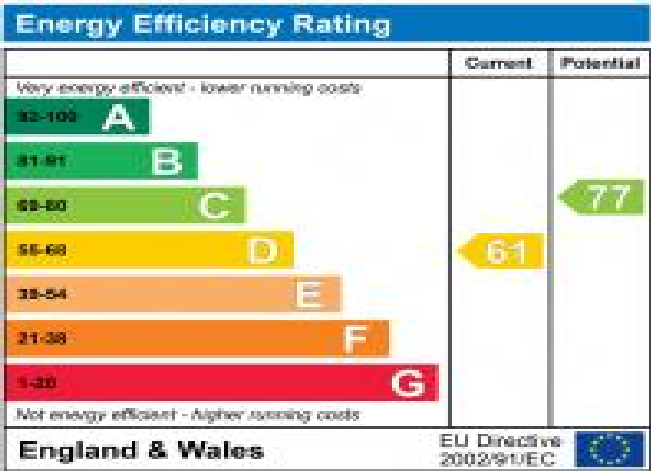
Northwood provides a range of shopping facilities including a Waitrose supermarket, a variety of restaurants and other amenities with the Metropolitan Line station providing access to Baker Street and the City. There is a plethora of state and private schooling together with a wide choice of recreational facilities, which include golf courses and fitness centres. The M1, M40 and M25 motorways are also accessible.

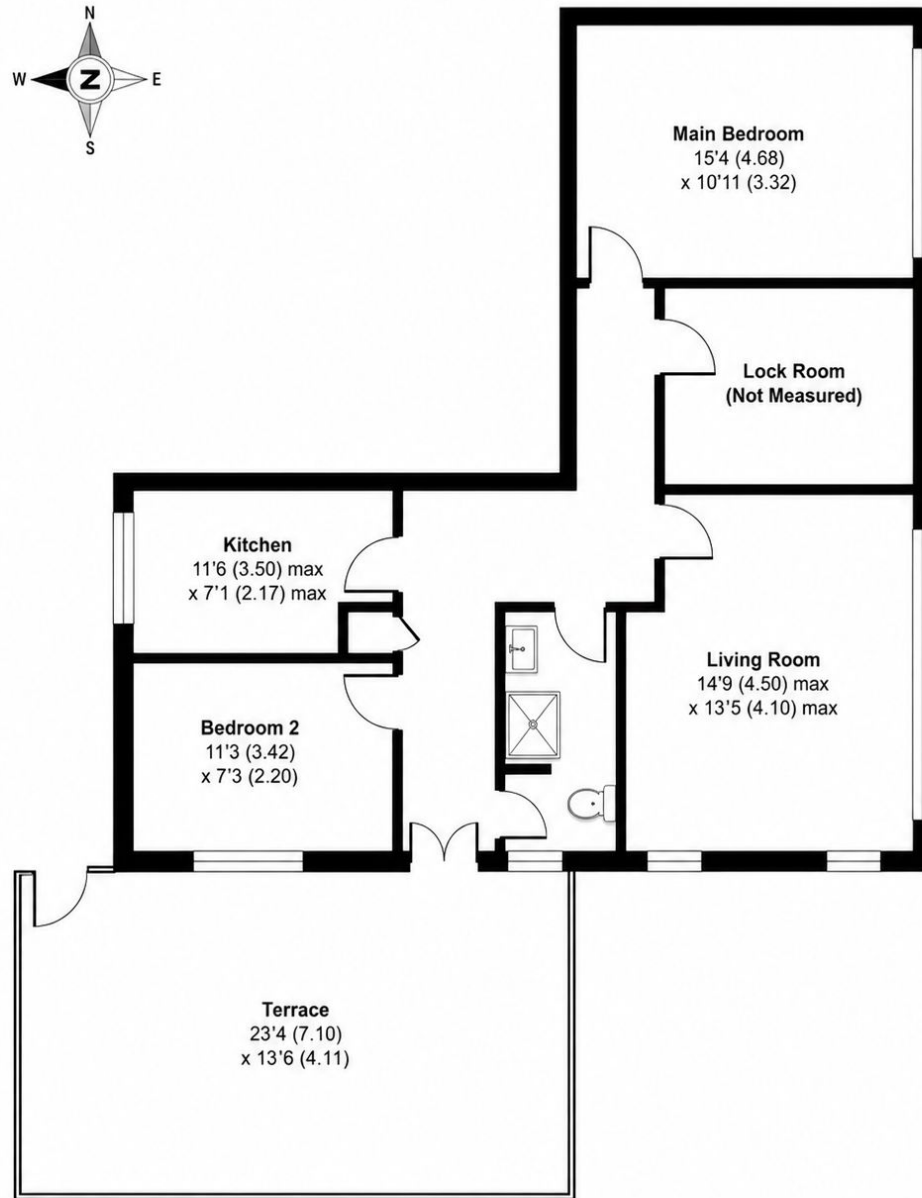
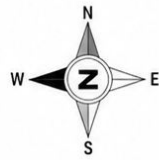




Additional Information

- Local Authority: Hillingdon
- Council Tax Band: D
- Deposit Amount: £2,076.00
- Reservation Payment: One weeks rent
- Energy Efficiency Rating: Band D
- Available Date: 11/06/2026





SECOND FLOOR



REGISTERED OFFICE 2-4 PACKHORSE ROAD, GERRARDS CROSS, BUCKINGHAMSHIRE, ENGLAND, SL9 7QE. COMPANY NO. 07557114. VAT NO. GB211239453