



Tattershall Drive, Market Deeping, Peterborough
£315,000 Freehold

**Sharman
Quinney**

Key Features



- Detached Home
- Four Bedrooms
- Two Reception Rooms
- En Suite
- No Chain

Accommodation Includes

Front door to:

Entrance Hall

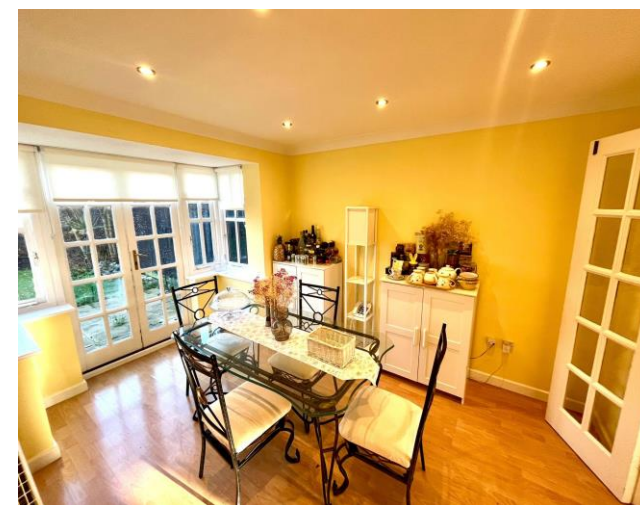
Internal door leading to garage, stairs to first floor and landing, radiator.

Cloakroom

Wc, wash hand basin, window to side elevation.

Lounge

5.79m into bay x 3.60m (19' into bay x 11'9").
Access via double doors from hallway, bay window to front aspect, radiator, window to side aspect, double doors opening to:



Dining Room

2.69m x 3.90m (8'10" x 12'9"). Radiator, double opening French doors opening onto the rear garden.

Kitchen Breakfast Room

4.46m x 3.08m max (14'7" x 10'1" max). Comprising a range of base and eye level units with worktops over, plumbing for dishwasher and washing machine, sink with mixer taps and drainer, window to rear, electric oven, hob and extractor, space for fridge freezer, door opening to rear garden.

Stairs to First Floor and Landing

Window to side aspect, loft access, airing cupboard.

Bedroom One

3.19m x 3.08m (10'5" x 10'1"). Window to front aspect, radiator, built in wardrobes, door to:

En Suite

Comprising shower cubicle, wc, wash hand basin, radiator, window to front aspect.

Bedroom Two

3.20m x 2.84m (10'6" x 9'4"). Window to rear aspect, radiator, built in wardrobes.

Bedroom Three

3.17m x 2.56m (10'4" x 8'4"). Window to front aspect, radiator.





Bedroom Four
3.04m x 2.44m (9'11" x 8'). Window to rear aspect, radiator.

Bathroom
Three piece suite comprising panel bath, power shower, wc, pedestal wash hand basin, heated towel rail, window to rear aspect.

Outside
The rear garden is enclosed, laid to lawn, with borders, paving and patio area, timber fence surround with side gate access. The front garden is laid to lawn with shrubs and driveway leading to a single garage with metal up and over door power and light connected.

To view this property call Sharman Quinney on:
01778 343322

Selling your property?

Contact us to arrange a **FREE** home valuation.

 01778 343322

 25 Market Place, Market Deeping,
PETERBOROUGH, Cambridgeshire, PE6 8EA

 marketdeeping@sharmanquinney.co.uk

 www.sharmanquinney.co.uk



 SCAN ME



Sharman Quinney Holdings Limited is registered in England and Wales under company number 4174227, Registered Office is Cumbria House, 16-20 Hockliffe Street, Leighton Buzzard, Bedfordshire, LU7 1GN. VAT Registration Number is 500 2481 05.

1: These particulars do not constitute part or all of an offer or contract. 2: The measurements indicated are supplied for guidance only and as such must be considered incorrect. 3: Potential buyers are advised to recheck the measurements before committing to any expense. 4: Sharman Quinney has not tested any apparatus, equipment, fixtures, fittings or services and it is the buyers interests to check the working condition of any appliances. 5: Sharman Quinney has not sought to verify the legal title of the property and buyers must obtain verification from their legal representative. 6: Intending purchasers will be asked to produce identification documentation at a later stage and we would ask your co-operation in order that there will be no delay in agreeing the sale. Ref: MRD204422 - 0006

