



King's Lodge

71 King Street, Maidstone ME14 1BG

- 1 Bedroom Retirement Apartment
 - Entirely Independent
 - Multiple Daily Activities
 - Off Road Parking
 - Immaculate Presentation
- Find New Hobbies
- Central Location
 - Safe & Secure
 - Over 60's only
- Available beginning of August

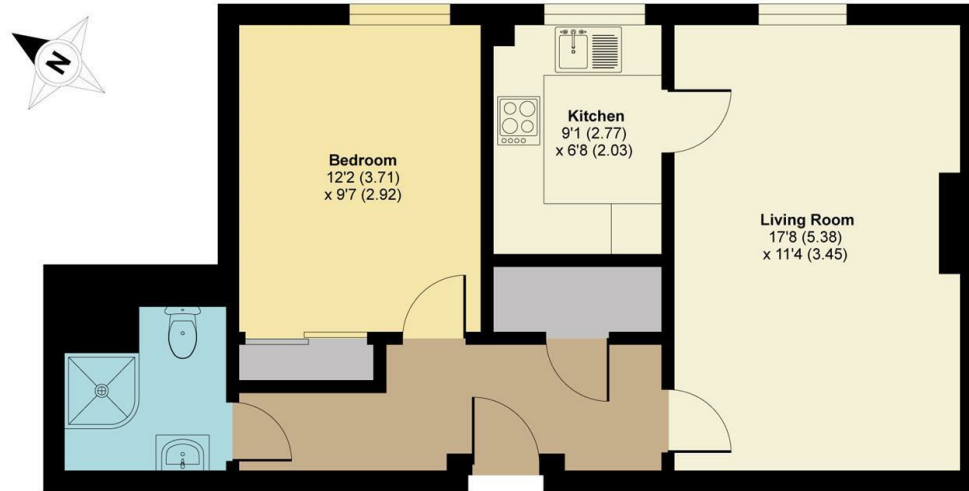
£1,350 PCM



Local Authority Maidstone
Borough Council
Council Tax Band C
EPC Rating B

Kings Lodge, King Street, Maidstone, ME14

APPROX. GROSS INTERNAL FLOOR AREA 566 SQ FT 52 SQ METRES



THIRD FLOOR

Whilst every attempt has been made to ensure the accuracy of the floor plan contained here, measurements of doors, windows and rooms are approximate and no responsibility is taken for any error, omission or misstatement. These plans are for representation purposes only as defined by RICS Code of Measuring Practice and should be used as such by any prospective purchaser. Specifically no guarantee is given on the total square footage of the property if quoted on this plan. Any figure given is for initial guidance only and should not be relied on as a basis of valuation.
Copyright nichecom.co.uk 2018 Produced for Simon Miller & Company REF : 367739



Lettings Office

Lettings Division, 779 London Road,
Larkfield, Aylesford, Kent, ME20 6DE

Contact

01732 875777
lettings@simonmiller.co.uk
<https://simonmiller.co.uk/landlo/services/>

Agents Note: Whilst every care has been taken to prepare these particulars, they are for guidance purposes only. All measurements are approximate and for general guidance purposes only and whilst every care has been taken to ensure accuracy, they should not be relied upon and potential buyers/tenants are advised to recheck the measurements.

