

Flat 12 Kipling Court, Holliers Hill, Bexhill, TN40 2LZ

£1,225

- 2 bedrooms
- Spacious reception room
- Flat in Bexhill
- Easy access to transport
- 1 modern bathroom
- Located in Kipling Court
- Close to local amenities
- Viewing recommended

Flat 12 Kipling Court, Bexhill TN40 2LZ

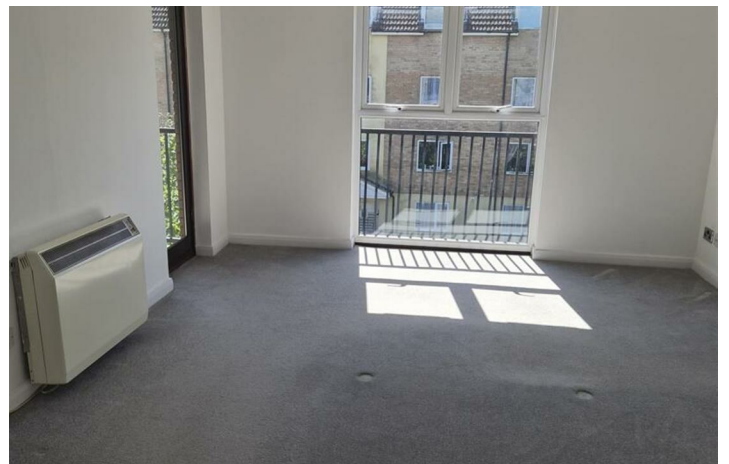
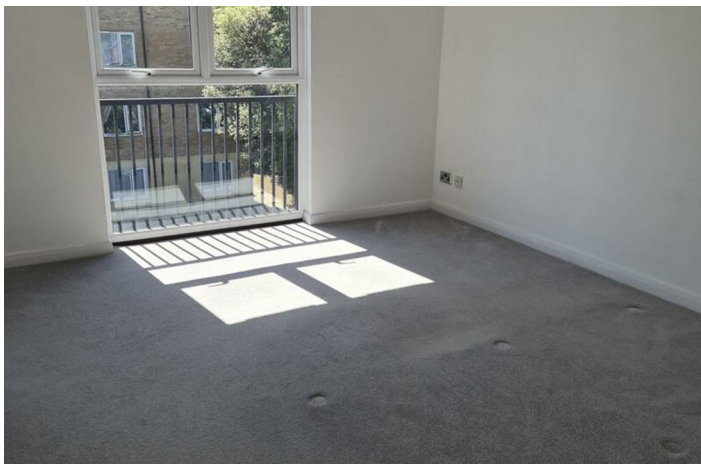
Welcome to Kipling Court, a charming flat located on Holliers Hill in the delightful town of Bexhill. This well-appointed property features a comfortable reception room, perfect for relaxing or entertaining guests. With two inviting bedrooms, it offers ample space for individuals or small families seeking a cosy home.

The flat includes a well-designed bathroom, ensuring convenience and comfort for its residents. Although the property spans a modest size, it is thoughtfully laid out to maximise the use of space, making it an ideal choice for those who appreciate a low-maintenance lifestyle.

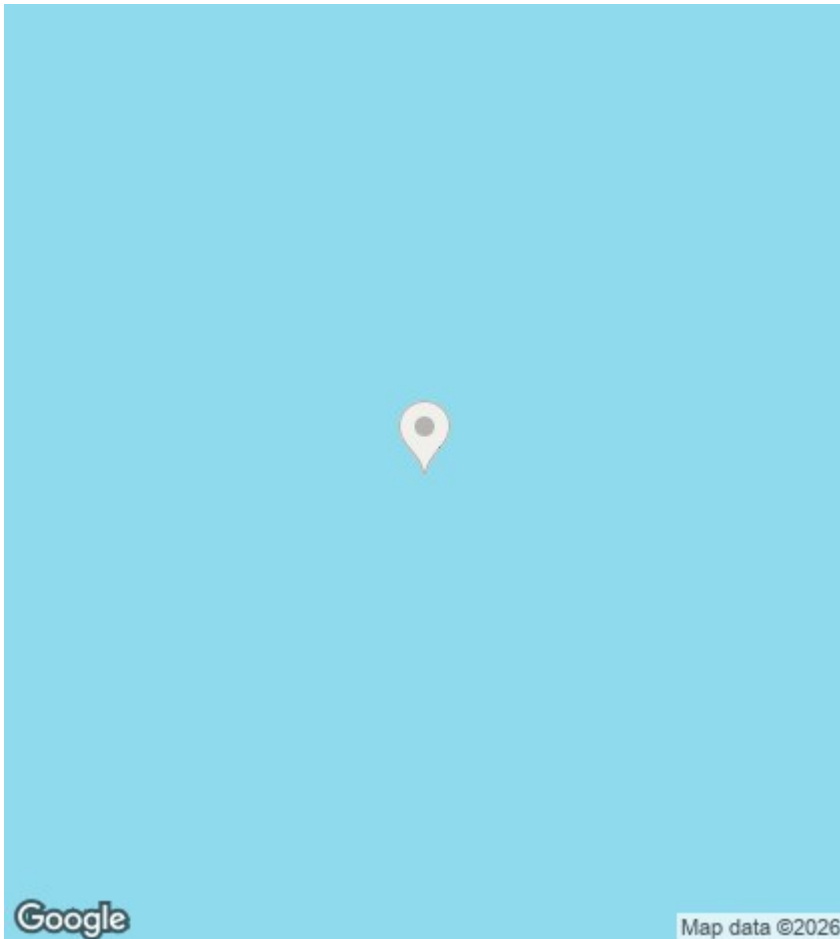
Bexhill is known for its beautiful coastline and vibrant community, providing a range of local amenities, including shops, cafes, and parks. The area is well-connected, making it easy to explore the surrounding regions or commute to nearby towns.



Council Tax Band: B







Directions

Viewings

Viewings by arrangement only. Call 01634 576000 to make an appointment.

EPC Rating:

Energy Efficiency Rating		
	Current	Potential
<i>Very energy efficient - lower running costs</i>		
(92 plus) A		
(81-91) B		
(69-80) C		
(55-68) D		
(39-54) E		
(21-38) F		
(1-20) G		
<i>Not energy efficient - higher running costs</i>		
England & Wales	EU Directive 2002/91/EC	