



Guide Price
£350,000

Freehold

3x  1x  1x 

**Simpson Road,
Snodland, Kent, ME6**

OVER 60?

Secure this property
for up to **59% less!**

Wards
Helping you move forwards



Main features

- **Lovely size family home in an extremely quiet location**
- **Handy downstairs cloakroom plus lovely upstairs bathroom**
- **Ready to move straight into**
- **Incredible garden/outdoor space which is perfect for entertaining**
- **Easy parking in your allocated space plus a separate garage too**

Accommodation

GROUND FLOOR

Entrance Hall
 Cloakroom
 Lounge: 16'4 x 13'11 (4.98m x 4.24m)
 Kitchen/Diner: 16'3 x 10'7 (4.96m x 3.23m)

FIRST FLOOR

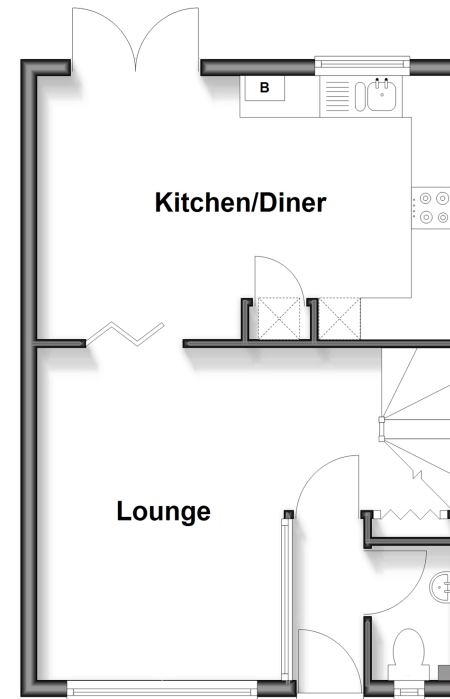
Landing
 Bedroom 1: 12'1 x 9'3 (3.69m x 2.82m)
 Bedroom 2: 11'3 x 8'4 (3.43m x 2.54m)
 Bedroom 3: 10'6 x 7'6 (3.20m x 2.29m)
 Bathroom

OUTSIDE

Front and Rear Gardens
 Allocated Parking Space
 Garage

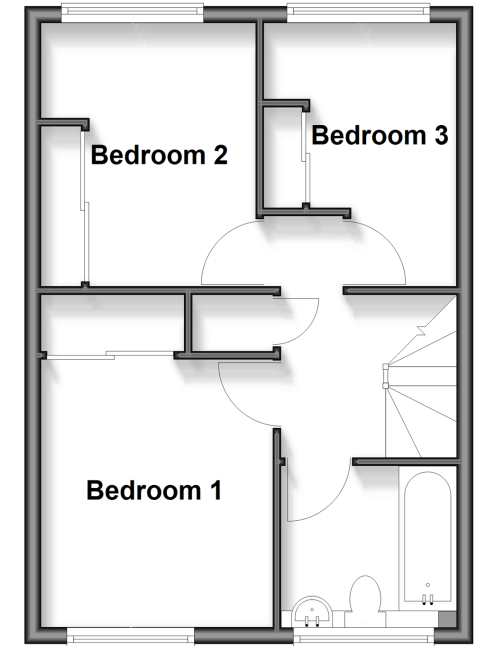
Ground Floor

Approx. 36.6 sq. metres (393.9 sq. feet)



First Floor

Approx. 36.6 sq. metres (393.9 sq. feet)



Call Snodland - 01634 245055 ■ wardsof Kent.co.uk

■ Legal advice should be taken to verify fixtures/fittings, planning, alterations and/or lease details
 ■ Through a Homewise Home For Life Plan people aged 60+ can secure this property for up to 50% less, by purchasing a Lifetime Lease.

■ Appliances & services are untested, dimensions are approximate and floor plans are not to scale



13819713/20250927/CG/LK