



503 Hopper House 5 Pilkington Terrace, Pettman Crescent, London, SE28

**NEW**  
**£1,700 Per month**

- Luxury kitchen and bathroom
- Brand new luxury apartment
- Close to transport links
- 1 spacious bedroom
- 543 sq ft of space
- Private balcony with views
- Available from 11th July
- Located in Lombard Square
- Modern new build flat
- Unfurnished

# 503 Hopper House 5 Pilkington Terrace, London SE28

**OEW**

Welcome to Hopper House, a stunning new build flat located in the vibrant Lombard Square, London. This contemporary property, completed in 2026, offers a modern living experience in one of the city's most sought-after areas.

Spanning an impressive 543 square feet, this flat features a well-designed layout that includes a spacious reception room, perfect for entertaining guests or enjoying a quiet evening at home. The property boasts one comfortable bedroom, providing a peaceful retreat, and a stylish bathroom that meets all your needs.

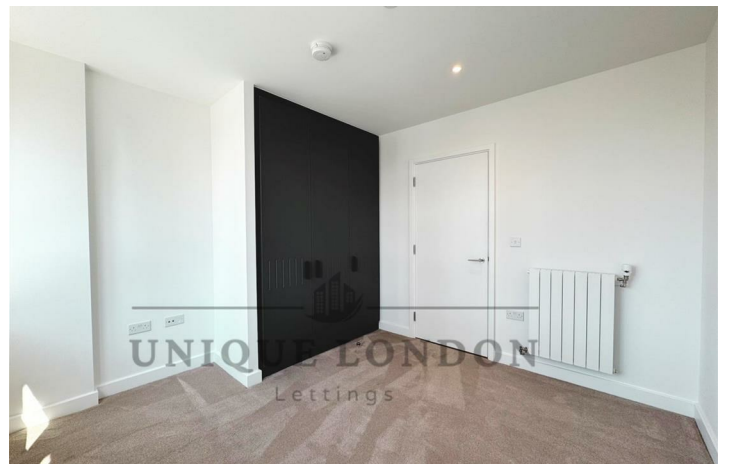
As an unfurnished property, this flat presents a wonderful opportunity for you to personalise your living space and make it truly your own. The modern design and high-quality finishes throughout ensure that you will enjoy a comfortable and stylish lifestyle.

Hopper House is ideally situated, offering easy access to local amenities, transport links, and the vibrant culture of London. Whether you are a young professional or a couple looking for a new home, this flat is an excellent choice for those seeking a contemporary living space in the heart of the city.

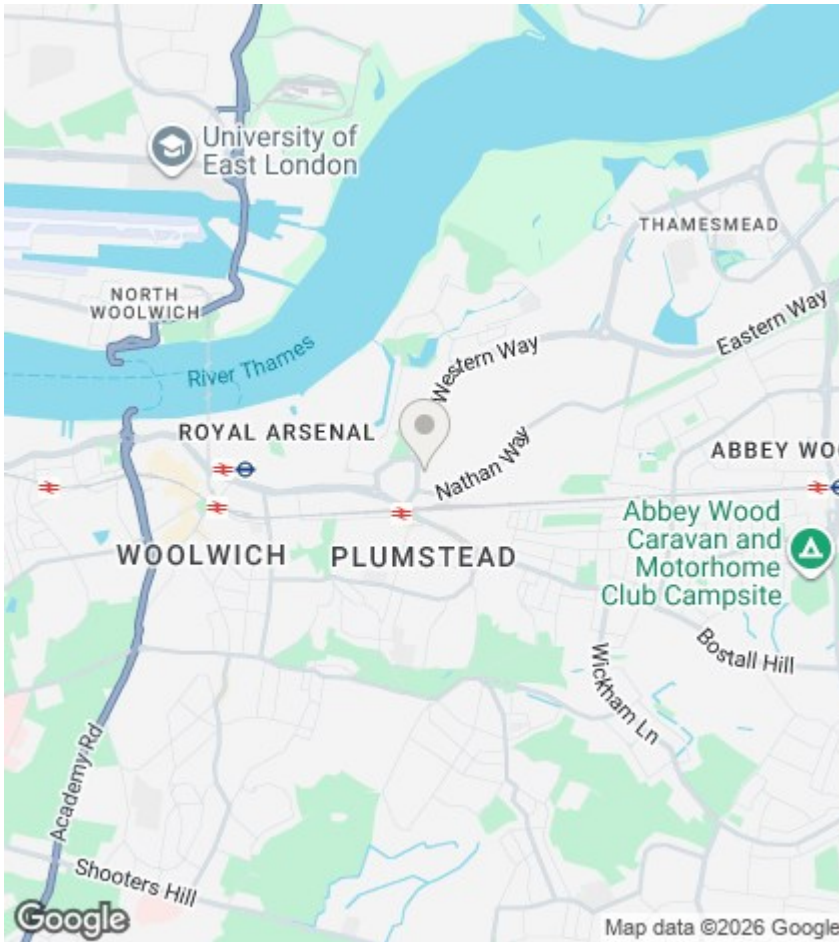
Do not miss the chance to make this exceptional property your new home. Contact us today to arrange a viewing and experience the charm of Hopper House for yourself.



Council Tax Band: B







## Directions

## Viewings

Viewings by arrangement only. Call to make an appointment.

## EPC Rating:

B

Energy Efficiency Rating		Current	Potential
Very energy efficient - lower running costs			
(92 plus) <b>A</b>			
(81-91) <b>B</b>		84	
(69-80) <b>C</b>			
(55-68) <b>D</b>			
(39-54) <b>E</b>			
(21-38) <b>F</b>			
(1-20) <b>G</b>			
Not energy efficient - higher running costs			
<b>England &amp; Wales</b>		EU Directive 2002/91/EC	

