



Silver Crescent, London, W4 5SE

£325,000

WHITMAN & CO.

SALES · LETTINGS · COMMERCIAL

- Top floor flat
- Fitted kitchen
- Gas fired central heating
- 13'7" reception room
- Double bedroom
- Long lease & no onward chain

Tenure - Leasehold
 Lease Length - 140 years
 Ground Rent - £50 pa
 Service Charge - TBC
 Local Authority - Hounslow
 Council Tax - Band C

THE PROPERTY

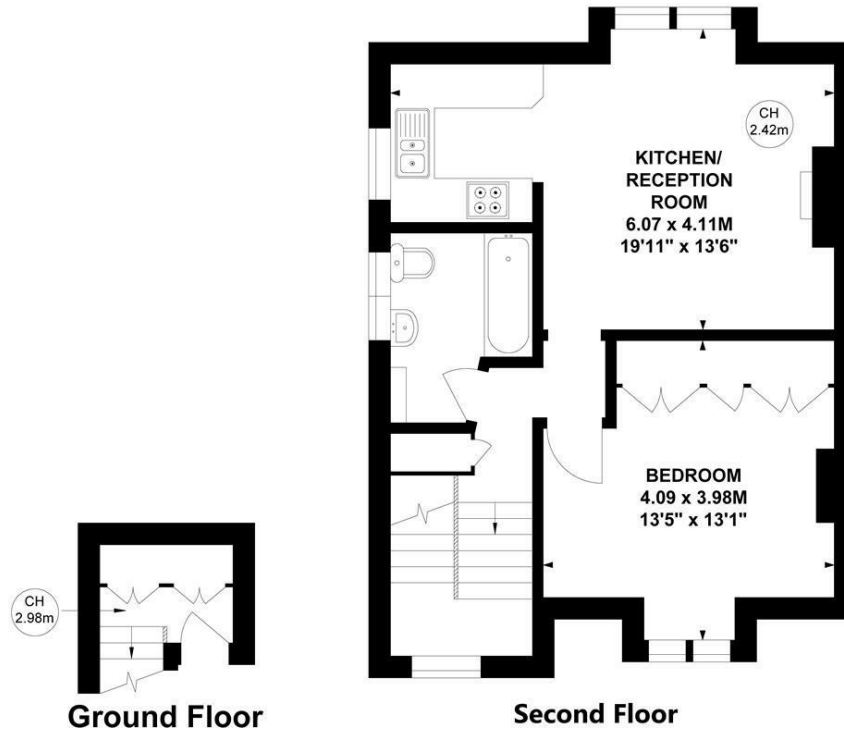
A spacious top-floor period conversion flat, ideally located in this tree-lined residential street. Offering close proximity to tube, rail and bus networks, as well as the extensive range of shops, bars and restaurants on Chiswick High Road.

The property comprises one double bedroom, 13.7' reception room, fitted kitchen, and a bathroom. With gas fired central heating, and a long lease. Offered for sale with no onward chain.

Silver Crescent, W4

Approximate gross internal area
50.24 sq m / 541 sq ft

Key :
 CH - Ceiling Height



Not to scale, for guidance only and must not be relied upon as a statement of fact.
 All measurements and areas are approximate only

SITUATION



5-7 Turnham Green Terrace, Chiswick, London, W4 1RG

Tel 020 8747 8800

E-mail sales@whitmanandco.com

Website www.whitmanandco.com