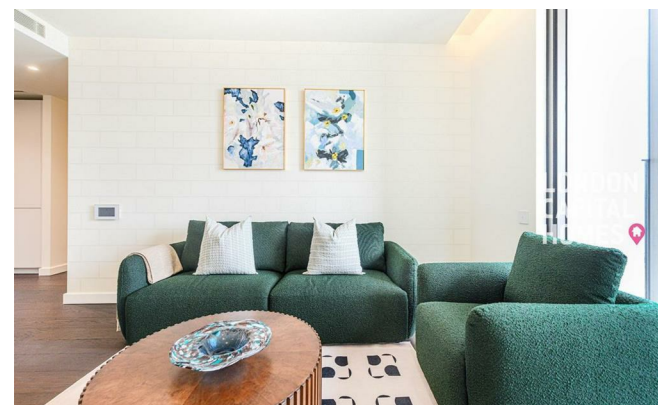


**LONDON
VICTORIA
GROUPS** 



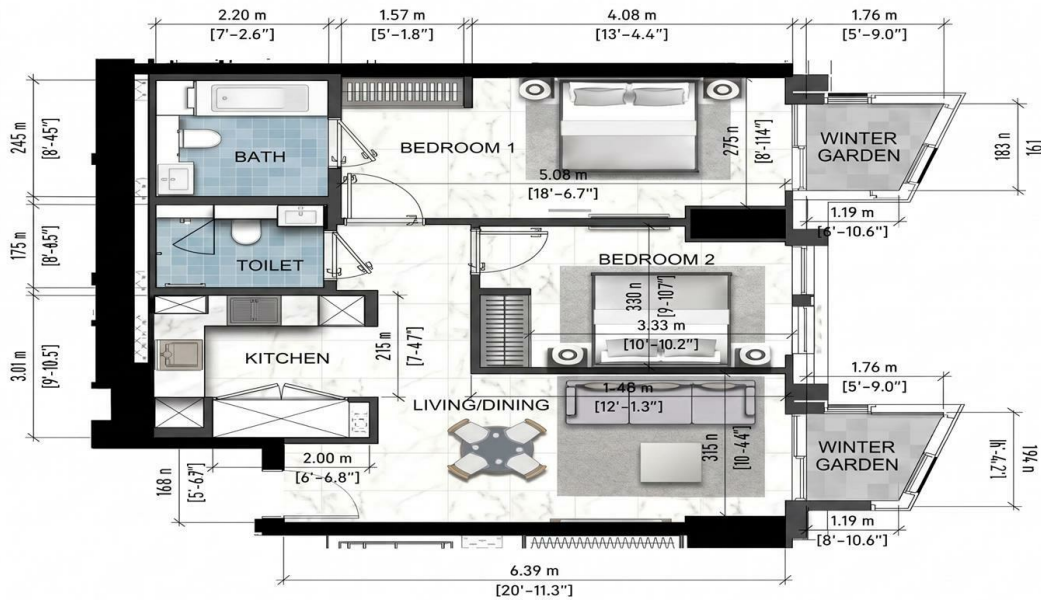
Damac Tower, 67 Bondway

, LONDON SW8 1GS

- Internal Area: 79m2
- 24 hour concierge
 - Spa and gym
- 2 Mins to Vauxhall Station
 - CTB-F
- Cinema room
- Roof Garden
- Swimming Pool
 - EPC-B

£4,850 Per Month

Local Authority **Lambeth**
 Council Tax Band **F**
 EPC Rating **B**



DAMAC TOWER

London Office Office

Spaces Victoria, 25 Wilton Road, Pimlico,
 London, SW1V 1LW

Contact

020 3084 3094
 XL@londonvictoriagroups.co.uk
 www.londonvictoriagroups.co.uk

Agents Note: Whilst every care has been taken to prepare these particulars, they are for guidance purposes only. All measurements are approximate and for general guidance purposes only and whilst every care has been taken to ensure accuracy, they should not be relied upon and potential buyers/tenants are advised to recheck the measurements.

