



THE CRESCENT, SW19

£1,395,000

Four bedroom modern home
Two bathrooms
Secure gated parking
Fitted air-conditioning units
Chain free
Energy rating: b

@marshandparsons
marshandparsons.co.uk

MARSH &
PARSONS

ABOUT THE PROPERTY

This is a stunning four bedroom, end of terrace modern family home built circa 2021. Upon entering the wide entrance hall, you find a large reception/dining room with a semi open-plan kitchen. The first floor offers three double bedrooms and a family bathroom, while the upper floor contains the principal bedroom with an en suite bathroom and walk-in wardrobe. The property is fitted with air conditioning units and is being sold chain free.

The Crescent is conveniently located near the amenities on Arthur Road and Wimbledon Park District Line Station, offering easy access to central London, and the nearby open spaces of Wimbledon Park.

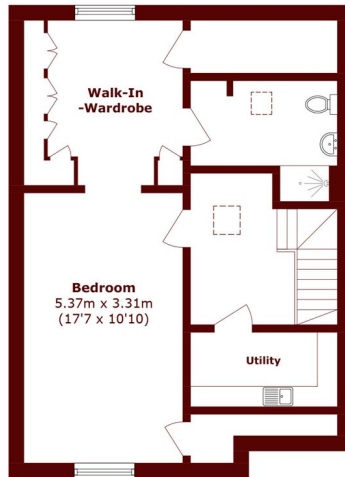








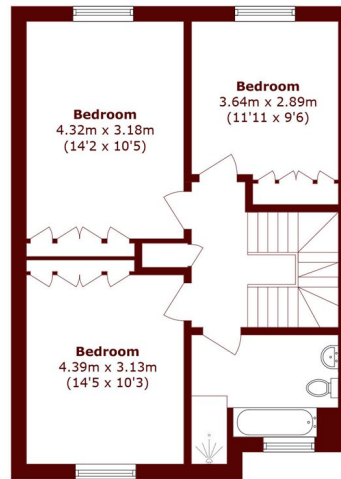
STEP INSIDE THE CRESCENT



Second Floor



Ground Floor



First Floor

Total area (approx.): 165.7 sq. m (1783.5 sq. ft)

Wimbledon
020 8879 6660

Energy Rating: B We aim to make our particulars both accurate and reliable. However, they are not guaranteed; nor do they form part of an offer or contract. If you require clarification on any points then please contact us, especially if you're traveling some distance to view. Please note that appliances and heating systems have not been tested and therefore no warranties can be given as to their good working order

MARSH &
PARSONS