



## Lion Mills, E2

£425,000

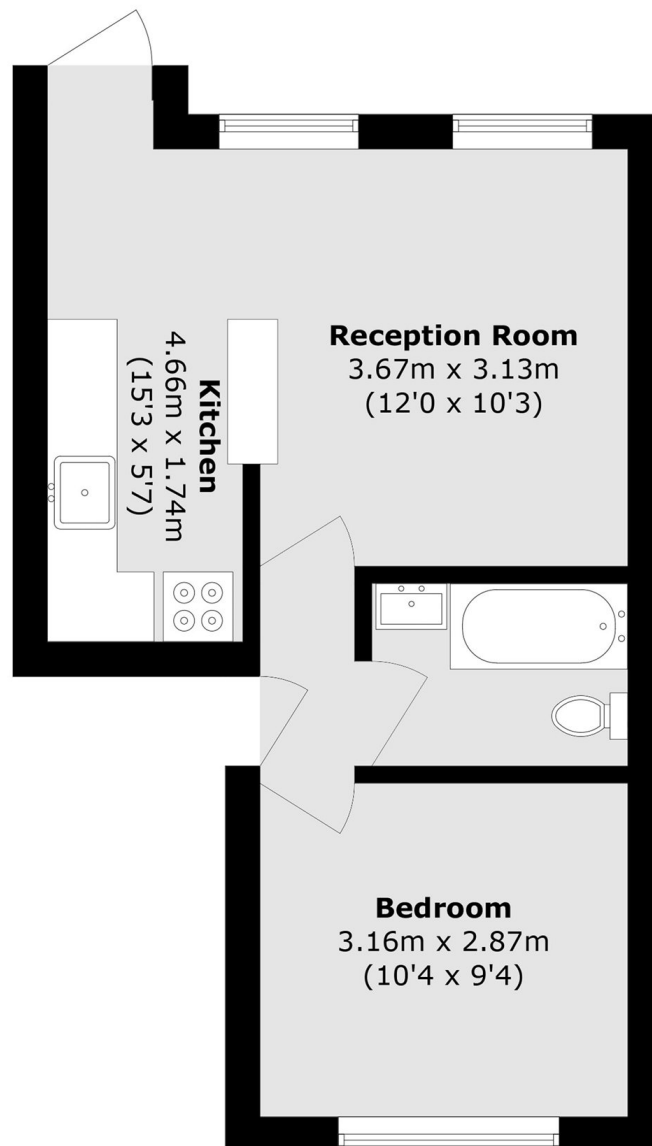
One bedroom apartment with private outside space set within Lion Mills, a sought after 19th Century Factory conversion. The apartment has a spacious, open plan living room with ample space to dine and modernised kitchen, this area leads out to the apartments unique private courtyard. The bedroom is a good size double with built-in storage and faces the communal gardens, the property also has a modernised bathroom. You gain access to the apartment via the developments maintained, landscaped communal gardens adding to the charm of the development.

Located on Hackney Road the sought after Lion Mills benefits from both Broadway Market and Columbia Road's many artisan cafés, restaurants and shops under half a mile away. Bethnal Green underground and Cambridge Heath overground are under half a mile away with easy access into the City of London.

### Features

- One bedroom
- Modernised
- 19th Century Factory Conversion
- Private courtyard
- Communal gardens

# Lion Mills, London, E2



Total area (approx.): 34.5 sq. m (371.4 sq. ft)