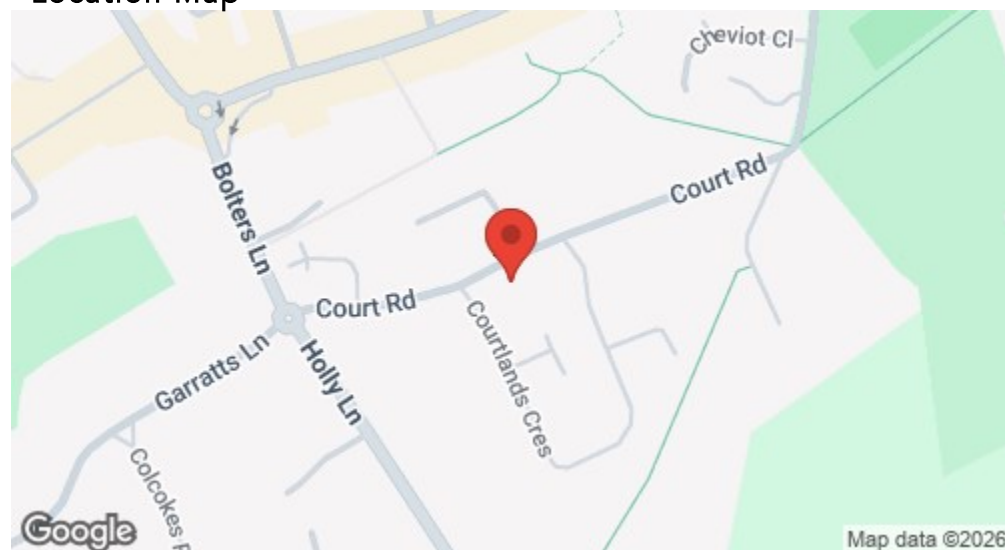
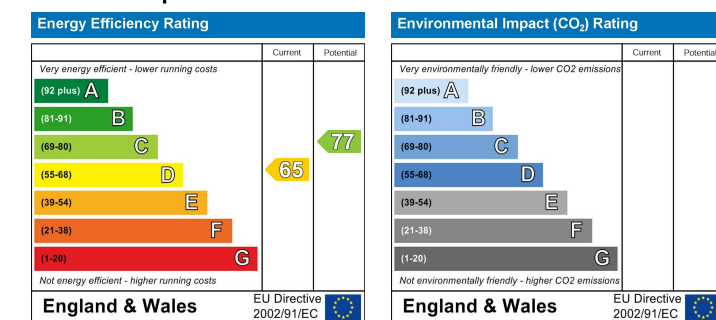


Location

Location Map



EPC Graph



Important Note

Centro Residential Sales and Lettings limited have not tested any services, heating system, electrical system, appliances, fixtures and fittings, that may be included in this property and would advise interested parties to satisfy themselves as to their condition or investigating the presence of any deleterious materials.

Viewing: Strictly by appointment through:

CENTRO RESIDENTIAL SALES AND LETTINGS LIMITED

Tel: 020 8401 5000

E-mail: residential@centro.plc.uk

See a selection of our properties at www.centro.plc.uk

£2,750 Per Month - 1st April 2026

Court Road, Banstead, SM7 2PH



Description

- Village Location
- Semi Detached
- Two Double Bedrooms
- Extended Living Area
- Driveway Parking
- Unfurnished
- EPC Rating : D
- Council Tax Band : E

Features

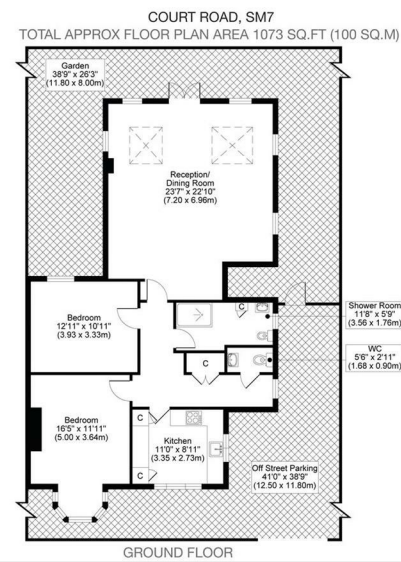
- Village Location
- Bungalow
- Neutral Décor

What you need to know

- Term: 12 months
- Rent: £2750pcm exclusive of bills
- Security deposit: £3173.00
- Council Tax Band: E
- Energy Rating: D



Floor Plan



All measurements, walls, doors, windows, fittings and their appliances, their size and locations are shown conventionally and are approximate only and cannot be regarded as being a representation either by the seller or his agent.

optic
MEDIA
optimedia.co.uk

For illustration purposes only



All dimensions and measurements are approximate and for guidance only.

Just Centro's Opinion...

Located on Court Road in Banstead Village, this delightful semi-detached bungalow presents a unique opportunity for those seeking a comfortable and inviting home. Situated just a short walk from Banstead village, residents will benefit from easy access to a variety of local shops, cafes, and amenities.

The bungalow benefits from a fully fitted kitchen, an extended living area leading to the rear garden, two double bedrooms, a well appointed shower room and an additional W/C.

Another standout feature of this property is the beautiful rear garden, which offers a tranquil outdoor space perfect for enjoying sunny days or hosting gatherings with friends and family. Additionally, off-street parking for multiple cars adds to the convenience of this lovely home.

In summary, this semi-detached bungalow on Court Road is a rare find in Banstead village, offering a harmonious blend of space, comfort, and outdoor beauty. Don't miss the chance to make this charming property your new home.

Additional Photos

