



Crowns Rest Porton Road, Amesbury Salisbury SP4 7LL

welcome to

Crowns Rest Porton Road, Amesbury Salisbury

Private cul-de-sac located in close proximity to local amenities and Amesbury town centre in addition to easy access for transport links across the A 303. This bungalow finished to a high specification is not to be missed, offering spacious, and bright living accommodation throughout.



Entrance Hallway

UPVC door to the front aspect, storage cupboard and understairs cupboard, carpet flooring, radiator, door to ground floor bedrooms, family bathroom and living accommodation.

Kitchen

14' 5" x 8' 2" (4.39m x 2.49m)
Lamona fitted kitchen benefiting from built in appliances including; fridge/freezer, wine fridge, dishwasher, washing machine, four ring gas hob, electric oven and microwave. Double glazed window to the rear aspect, Inset sink, wall and base matching units with vinyl flooring.

Lounge

15' 1" x 12' 6" (4.60m x 3.81m)
Open to the living accommodation:

Bifold doors opening to the rear garden, sky lights, carpet flooring and radiators.

Family Bathroom

Four Piece family bathroom with separate shower cubicle, bath with shower attachment, side aspect double glazed window w/c sink with vanity, tiled flooring and heated towel rail

Second Bedroom

18' 8" x 9' 6" (5.69m x 2.90m)
Double glazed window to the front, built in wardrobe, carpet flooring and radiator.

Third Bedroom

11' 6" x 9' 6" (3.51m x 2.90m)

First Floor Landing

Carpet

Principal Bedroom

20' 4" x 18' 8" (6.20m x 5.69m)
Velux window, television point, walk in wardrobe, carpet flooring, radiator and door into the en-suite.

En-Suite

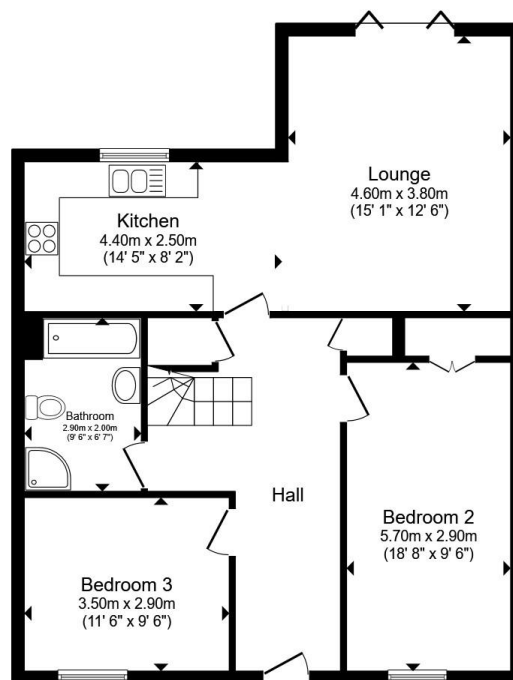
Three piece shower suite, comprising of; shower cubicle, wash hand basin, W.C., vinyl flooring, towel radiator and velux window.

Garden

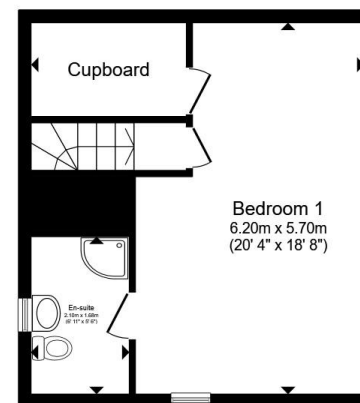
Rear enclosed garden, laid to lawn and patio area with side access to the front.

Driveway

There is two parking spaces to the front of the property



Ground Floor



First Floor

Total floor area 113.8 m² (1,225 sq.ft.) approx

This floor plan is for illustrative purposes only. It is not drawn to scale. Any measurements, floor areas (including any total floor area), openings and orientation are approximate. No details are guaranteed, they cannot be relied upon for any purpose and they do not form part of any agreement. No liability is taken for any error, omission or misstatement. A party must rely upon its own inspection(s). Powered by www.propertybox.io


fox & sons



view this property online fox-and-sons.co.uk/Property/AME105870



welcome to

Crowns Rest Porton Road, Amesbury Salisbury

- CHALET BUNGALOW
- PRINCIPAL BEDROOM WITH EN-SUITE AND WALK IN WARDROBE
- OPEN PLAN LIVING
- LARGE ENCLOSED GARDEN
- DRIVEWAY

Tenure: Freehold EPC Rating: Awaited
Council Tax Band: D

£460,000



Please note the marker reflects the
postcode not the actual property

view this property online fox-and-sons.co.uk/Property/AME105870



Property Ref:
AME105870 - 0004

1. MONEY LAUNDERING REGULATIONS Intending purchasers will be asked to produce identification documentation at a later stage and we would ask for your co-operation in order that there is no delay in agreeing the sale. 2. These particulars do not constitute part or all of an offer or contract. 3. The measurements indicated are supplied for guidance only and as such must be considered incorrect. Potential buyers are advised to recheck measurements before committing to any expense. 4. We have not tested any apparatus, equipment, fixtures or services and it is in the buyers interest to check the working condition of any appliances. 5. Where an EPC, or a Home Report (Scotland only) is held for this property, it is available for inspection at the branch by appointment. If you require a printed version of a Home Report, you will need to pay a reasonable production charge reflecting printing and other costs. 6. We are not able to offer an opinion either written or verbal on the content of these reports and this must be obtained from your legal representative. 7. Whilst we take care in preparing these reports, a buyer should ensure that his/her legal representative confirms as soon as possible all matters relating to title including the extent and boundaries of the property and other important matters before exchange of contracts.


fox & sons



01980 624155



Amesbury@fox-and-sons.co.uk



49 Salisbury Street, AMESBURY, Wiltshire, SP4
7AW



fox-and-sons.co.uk