

# SNELLERS

ESTATE AGENTS



**Egerton Road, TW2**

**£980,000**

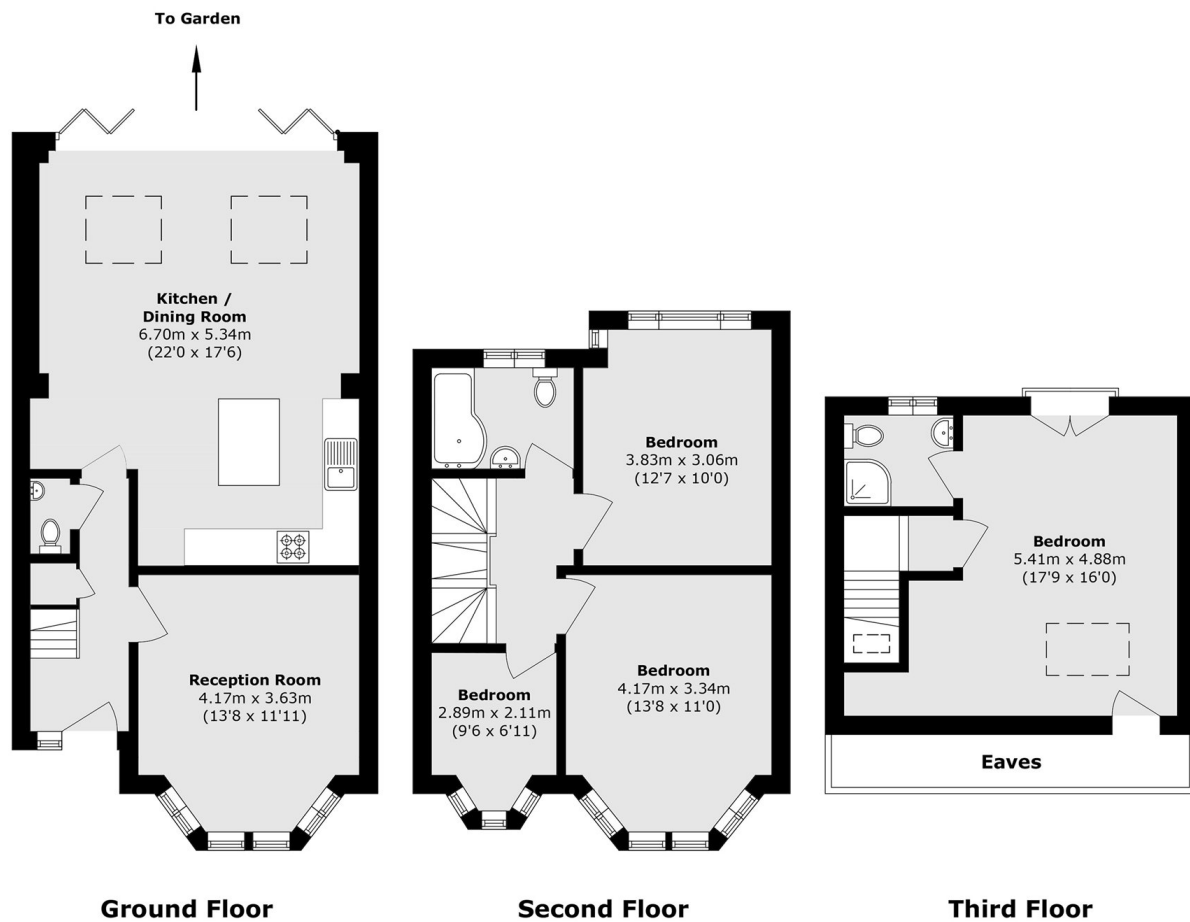
This charming family home offers over 1300 sq ft of well presented and modern living space. The ground floor includes a separate front living room, downstairs w.c, a great sized stylish open-plan kitchen with plenty of space for dining and entertaining and wide folding doors leading to the pretty south-west facing rear garden with side access. Upstairs there are three bedrooms and a contemporary family bathroom, while the top floor features a double bedroom with an en-suite shower room and eaves storage.

Egerton Road is a sought-after residential road in Twickenham sitting within the catchment area for many excellent schools and within close distance to Twickenham High Street and Twickenham Station for direct trains into London Waterloo.

- Well Presented • Four Bedrooms • Extended Kitchen/Dining Room •
- Two Bathrooms Plus WC • South West Facing Garden • Sought After Road •

# SNELLERS

ESTATE AGENTS



Total area (approx.): 121.7 sq. m (1310.0 sq. ft)  
(Excluding Eaves)

Snellers Twickenham Sales  
64-66 Heath Road  
Twickenham  
TW1 4BX  
020 8892 5555  
twickenhamsales@snellers.co.uk

Energy Rating: C We aim to make our particulars both accurate and reliable. However they are not guaranteed; nor do they form part of an offer or contract. If you require clarification on any points then please contact us, especially if you're traveling some distance to view. Please note that appliances and heating systems have not been tested and therefore no warranties can be given as to their good working order