

**Maplestead Road, Brixton, SW2**

2 bedroom flat - conversion for sale

**£450,000**

Share of Freehold

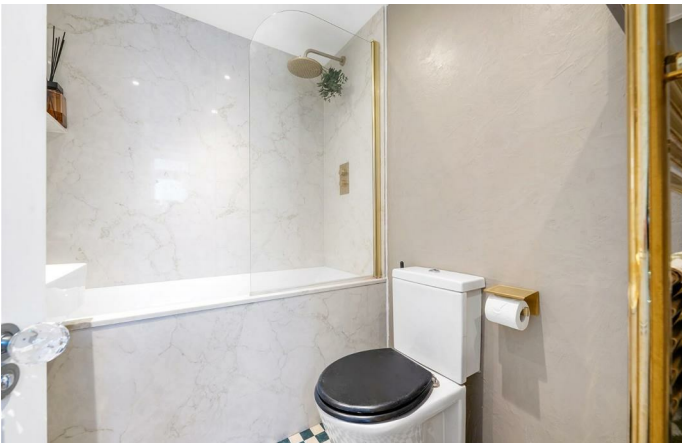
## Property Details

A beautifully presented, dog-friendly two double bedroom first floor apartment within a handsome Victorian terrace on Maplestead Road, ideally positioned for Brixton, Streatham Hill and Herne Hill, moments from Holmewood Gardens. Refurbished in 2024 and further enhanced with luxurious quartz worktops to the kitchen, island and bathroom, plus a new washing machine, induction hob and shower, this turnkey home is ready to enjoy. Spanning the width of the building, the expansive open-plan reception offers generous space to cook, dine and relax, finished with parquet flooring, high ceilings and a bright bay window. The contemporary kitchen lines one wall in charming green tones, fully integrated and perfect for entertaining, enhanced by a sociable island. Both double bedrooms are quietly set to the rear, separated for privacy and ideal for sharers. A sleek bathroom with marbled tiling, feature flooring, bathtub and rain shower completes this impressive home.

## Features

- Two double bedrooms
- Victorian conversion
- Beautifully presented
- Bright and airy throughout
- Dog-friendly building
- Moments to a park at the end of the road
- Local shops, cafes, bakeries, Tavern and schools
- Amenities and transport links of Brixton, Streatham and Herne Hill
- Share of freehold

Council tax band C    EPC rating C (72)

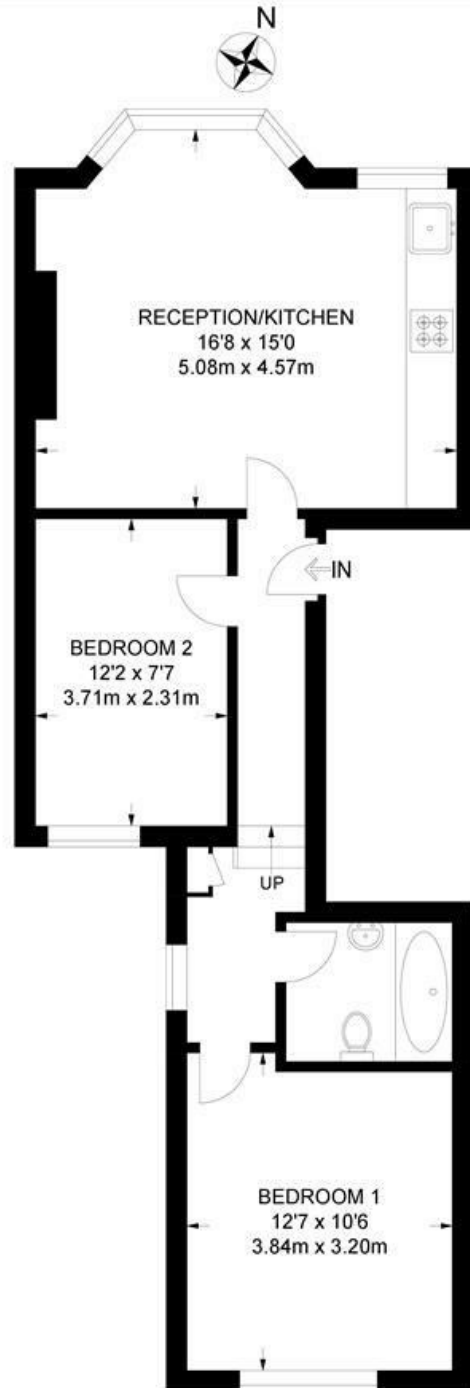




Maplestead Road, Brixton, SW2

**Maplestead Road, SW2**  
**2 Bedroom Flat**

APPROXIMATE GROSS INTERNAL AREA: 565 SQ FT / 52.5 SQ M



FIRST FLOOR



While we try our very best, floor plans are produced as a guide only and we take no responsibility for the precise accuracy with which any property is represented.

Maplestead Road, Brixton, SW2

