

NOVE



93 Bedale Road, Bedale

Bedale

Guide Price £318,500

93 Bedale Road

Bedale, Bedale

This detached bungalow sits on a large plot with outbuildings, offering both a comfortable home and potential for further development.

Inside, the property features a spacious living area with large windows that bring in plenty of natural light. The kitchen is well-equipped with modern appliances, good storage, and a practical layout. Next to it is a living room/dining area with views of the gardens.

There are two bedrooms. The main bedroom includes a large bay window, while the second bedroom is a comfortable double. A conservatory provides additional flexible space that can be used as a sunroom, office, or hobby room.

Outside, the large garden and outbuildings offer space for leisure, storage, or conversion into a workshop, studio, would offer fantastic potential for additional builds/development.

Council Tax band: E

Tenure: Freehold

EPC Energy Efficiency Rating: D

EPC Environmental Impact Rating: D

- Detached Bungalow
- Large Plot with Development Potential
- Outbuildings
- Large Gardens
- Conservatory





Conservatory

20' 11" x 8' 5" (6.37m x 2.56m)

A UPVC, Double glazed conservatory space with tiled floor.

This is a great space for additional entertaining.

Kitchen

11' 10" x 8' 5" (3.60m x 2.57m)

A full, fitted kitchen with white gloss units beneath a wood effect worktop. The kitchen houses an electric oven, integrated microwave and electric hob.

Living Room

12' 10" x 13' 0" (3.92m x 3.97m)

Set off from the kitchen with open fire, double glazed window to the side elevation and fitted storage into the alcove.

Hall

9' 0" x 15' 3" (2.74m x 4.65m)

Bathroom

9' 0" x 7' 0" (2.74m x 2.14m)

A fully fitted bathroom suite consisting of bath, shower cubicle, hand basin and toilet.

Living Room/Bedroom Three

14' 8" x 13' 4" (4.46m x 4.07m)

Currently used as an additional reception room. With large bay window to the front of the property and open fire. This room would make a spacious bedroom if required.

Bedroom One

12' 9" x 10' 10" (3.89m x 3.31m)

A spacious double to the front of the property, with large, bay window.

Bedroom Two

10' 5" x 10' 8" (3.18m x 3.24m)

Double size bedroom set to the side of the property with double glazed window.



Garden

Entering from the main road through a gated driveway, the approach runs parallel to large garden spaces, highlighting an enviable plot. The garden is sperated into key areas, offering a range of lawn, established trees and off street parking.

Garage

This brick built garage is open to the front allow easy, covered parking or storage.

Workshop

An ideal space for hobbyists or those who require additional storage. The brick built workshop has a rood known to contain asbestos and as such, care should be taken by anyone planning to remove or disturb the panels.

Driveway

Parking for multiple vehicles



NOVE

BEDALE Road

SUBMITTED BY
Nove Property
info@noveproperty.co.uk
01845470047

CREATED ON
2025-09-09

LOCATION
93 Bedale Road
DL8 1DZ Bedale
England
GB

DETAILS
Total area: 95.39 m²
Living area: 95.39 m²
Floors: 1
Rooms: 10

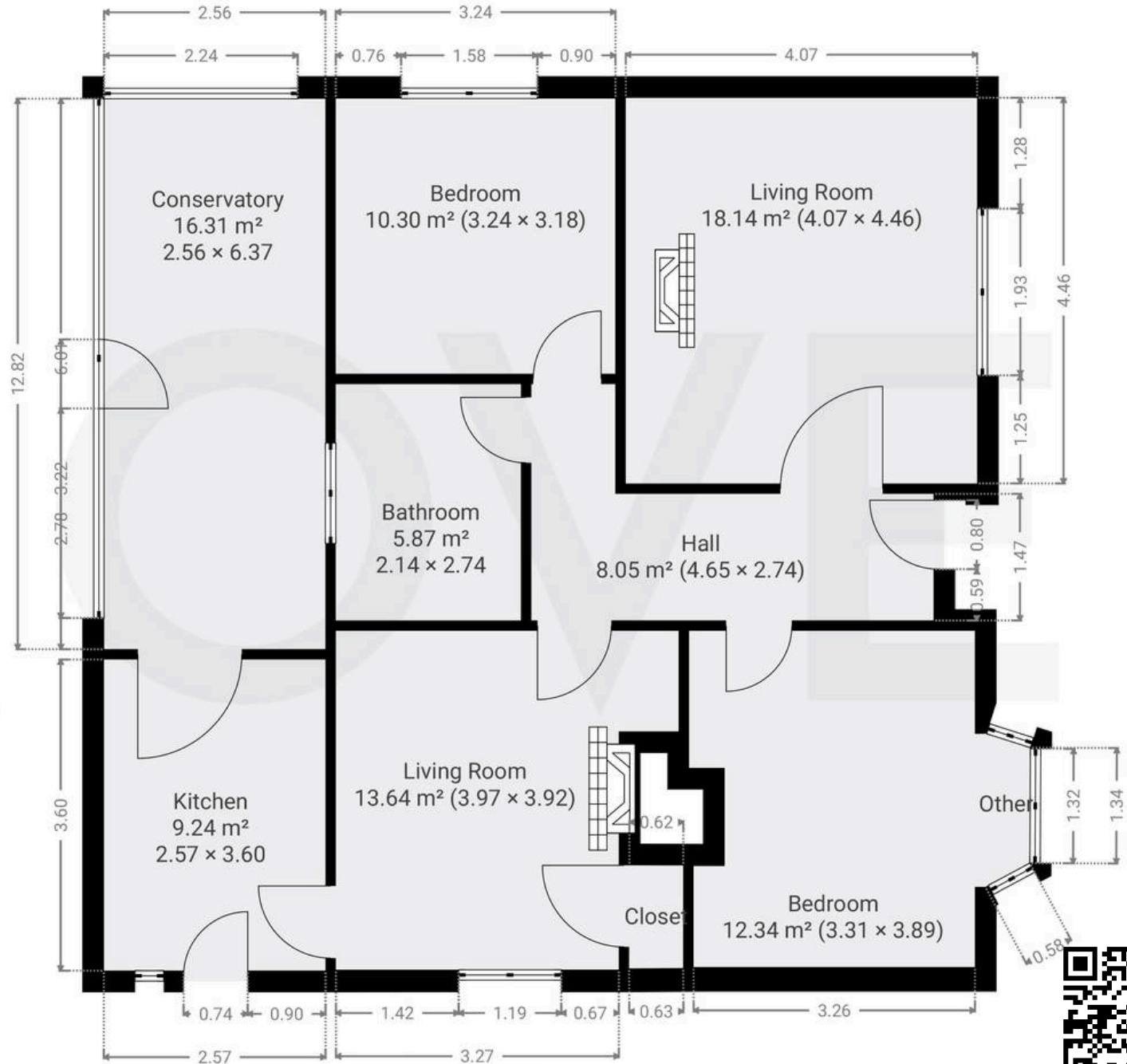
Nove
info@noveproperty.co.uk
www.noveproperty.co.uk
01845 407047

THIS FLOORPLAN IS PROVIDED WITHOUT WARRANTY OF ANY KIND. SENSOPIA DISCLAIMS ANY WARRANTY INCLUDING, WITHOUT LIMITATION, SATISFACTORY QUALITY OR ACCURACY OF DIMENSIONS.

0.0 0.5 1.0 1.5 2.0 2.5m
1:67

▼ Ground Floor

TOTAL AREA: 95.39 m² · LIVING AREA: 95.39 m² · ROOMS: 10





Nove

9 Bridge Street, Thirsk - YO7 1AD

01845 407047

info@novestate.co.uk

novestate.co.uk

