



Guide Price
£625,000

Freehold

4x  2x  3x 

**The Orpines,
Wateringbury,
Maidstone, Kent, ME18**

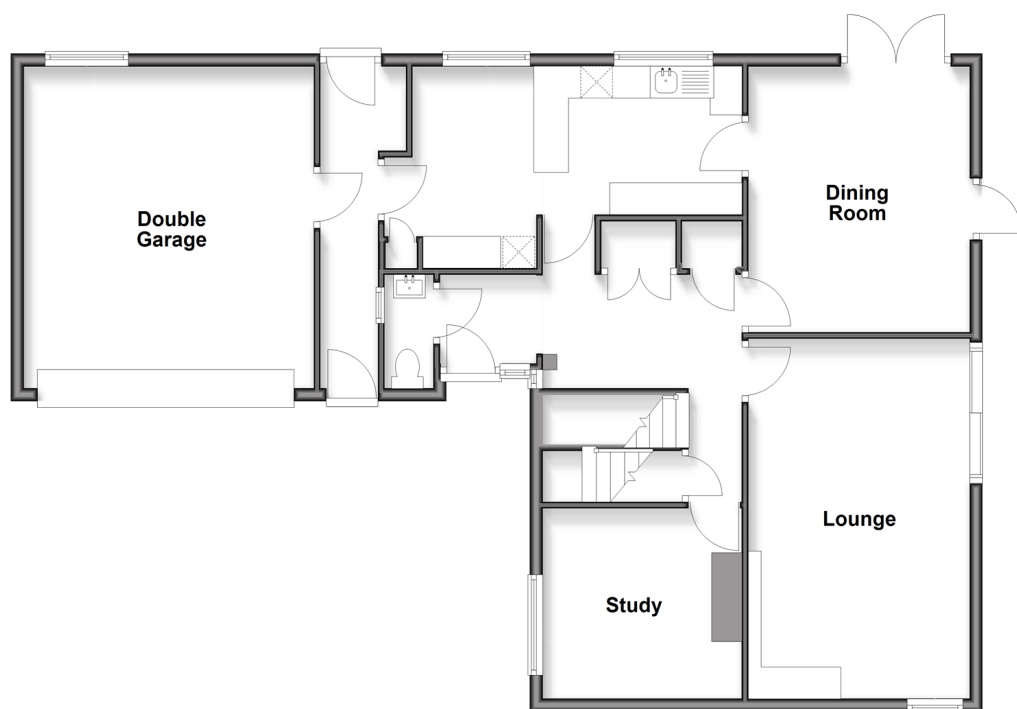
OVER 60?

Secure this property
for up to **59% less!**

Wards
Helping you move forwards

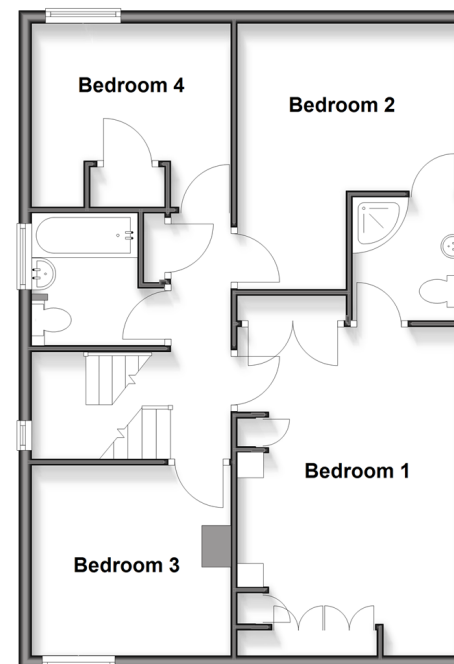
Ground Floor

Approx. 108.6 sq. metres (1169.0 sq. feet)



First Floor

Approx. 66.2 sq. metres (712.1 sq. feet)



Accommodation

GROUND FLOOR

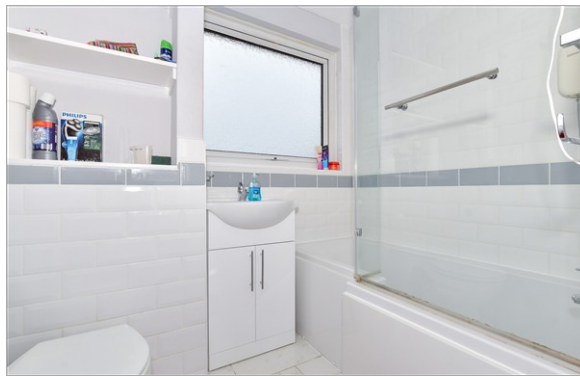
Cloakroom
Entrance Hall
Kitchen: 19'1 x 7'0 (5.82m x 2.14m)
Dining Room: 13'6 x 11'4 (4.12m x 3.46m)
Lounge: 18'7 x 12'1 (5.67m x 3.69m)
Study: 9'8 x 8'3 (2.95m x 2.52m)

FIRST FLOOR

Landing
Bedroom 1: 16'4 x 11'1 (4.98m x 3.38m)
En-Suite Shower Room
Bedroom 2: 13'8 x 11'4 (4.17m x 3.46m)
Bedroom 3: 10'3 x 9'8 (3.13m x 2.95m)
Bedroom 4: 10'2 x 9'6 (3.10m x 2.90m)
Bathroom

OUTSIDE

Rear Garden
Double Garage & Driveway



Main features

- Substantial detached house with large private garden to rear
- Perfect family home with flexible layout
- Large driveway & double garage
- Located close to local schools & amenities
- Ideal for someone looking to add their own stamp to!



Nearest Schools

Primary Schools: Wateringbury C of E Primary 0.4 miles, The Discovery School 1.2 miles, Kings Hill School 1.7 miles
Secondary Schools: The Malling School 2.4 miles, Bower Grove School 2.7 miles, Oakwood Park Grammar School 3.1 miles

Transport Information

Train Stations: Wateringbury 0.1 miles, Yalding 2.0 miles, East Malling 2.1 miles

Address

The Orpines, Wateringbury, Maidstone, Kent, ME18

Directions

For directions to this property please contact us.





Wards
Helping you move forwards

Call Kings Hill Branch 01732 222211 ■ wardsofkent.co.uk



- Legal advice should be taken to verify fixtures/fittings, planning, alterations and/or lease details
- Appliances & services are untested, dimensions are approximate and floor plans are not to scale
- Through a Homewise Home For Life Plan people aged 60+ can secure this property for up to 50% less, by purchasing a Lifetime Lease.

EPC RATING

CURRENT: C(69) POTENTIAL: C(75)

12403452/20251121/WA/WA