



WESTMORELAND TERRACE
PIMLICO

JACKSON-STOPS 

WESTMORELAND TERRACE PIMLICO, SW1V

ASKING PRICE: £499,000

A rare opportunity to acquire a two bedroom flat in SW1 available exclusively to residents aged 60 and over. Set within a charming period style building, it benefits from a generous lift serving all floors and access to a welcoming residents' lounge.

The flat offers two well proportioned double bedrooms, a bright open plan living and kitchen area, and a spacious bathroom.

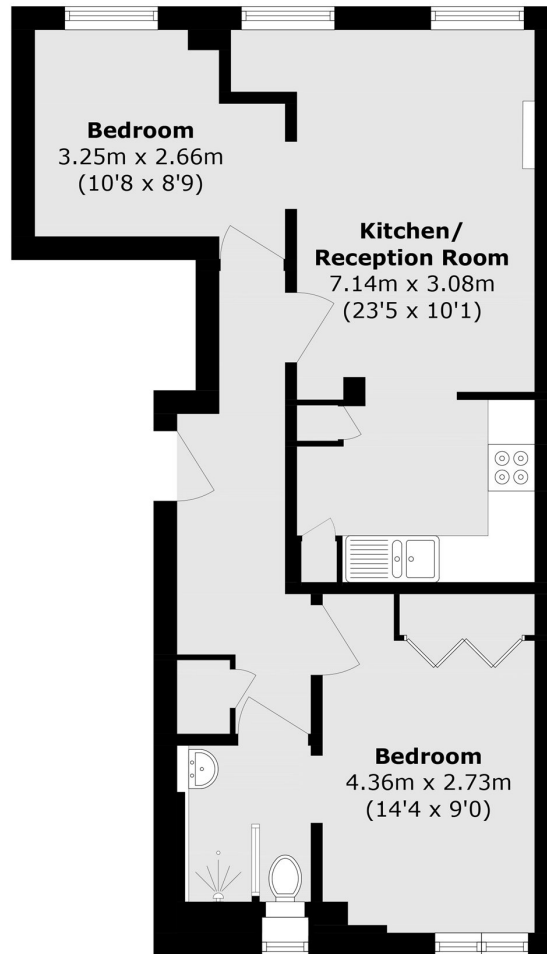
Bella Best House is located on Westmoreland Terrace which forms part of the highly sought after Westmoreland Triangle. The property is conveniently positioned for excellent transport links with a nearby bus stop and is within easy reach of the shopping and amenities of Victoria, Pimlico and Sloane Square.

KEY FEATURES

- 60 Years Plus Development
- Lift
- Leasehold: 103 Yrs Left
- Secure Building
- Residents Lounge
- Service Charge: £3960 pa







Lower Ground Floor

Total area (approx.): 57.1 sq. m (614.6 sq. ft)

Energy Rating: C. We aim to make our particulars both accurate and reliable. However they are not guaranteed; nor do they form part of an offer or contract. If you require clarification on any points then please contact us, especially if you are travelling some distance to view. Please note that appliances and heating systems have not been tested and therefore no warranties can be given as to their good working order.

ASKING PRICE: £499,000

PIMLICO

020 7828 4050

pimlicosales@jackson-stops.com

jackson-stops.co.uk

JACKSON-STOPS 