



Elm Park Gardens, SW10

£500,000

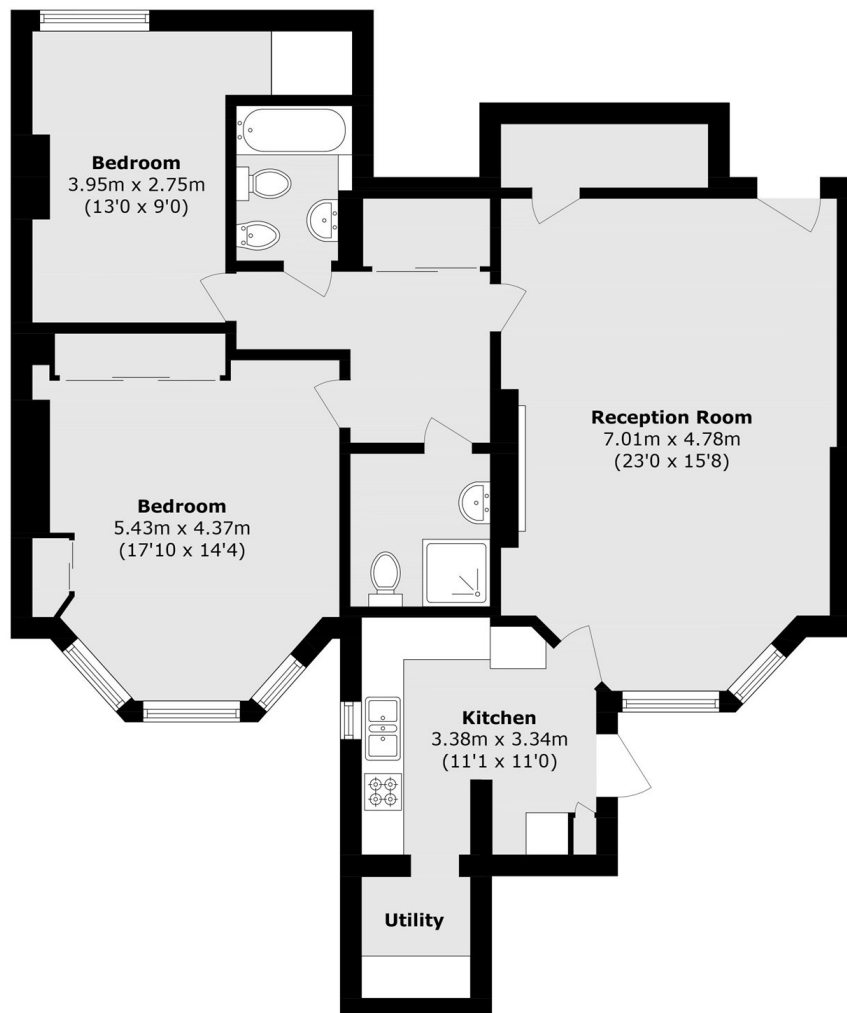
A completely unmodernised two bedroom apartment with its own private entrance. This property is held on a short lease of approximately 12 years and allows the incoming purchaser to design the property to their own taste while adding value.

Elm Park Gardens is ideally situated between the King's Road and Fulham Road. South Kensington, Gloucester Road and Sloane Square tube stations are all within walking distance.

Features

- Short Lease (Approx 12 years)
- Two Bedrooms
- Private Entrance
- Quiet Location
- Unmodernised
- Two Bathrooms

Elm Park Gardens, London, SW10



Lower Ground Floor

Total area (approx.): 102.1 sq. m (1099.0 sq. ft)