



## Chiswick High Road, W4

£1,700 Per calendar month

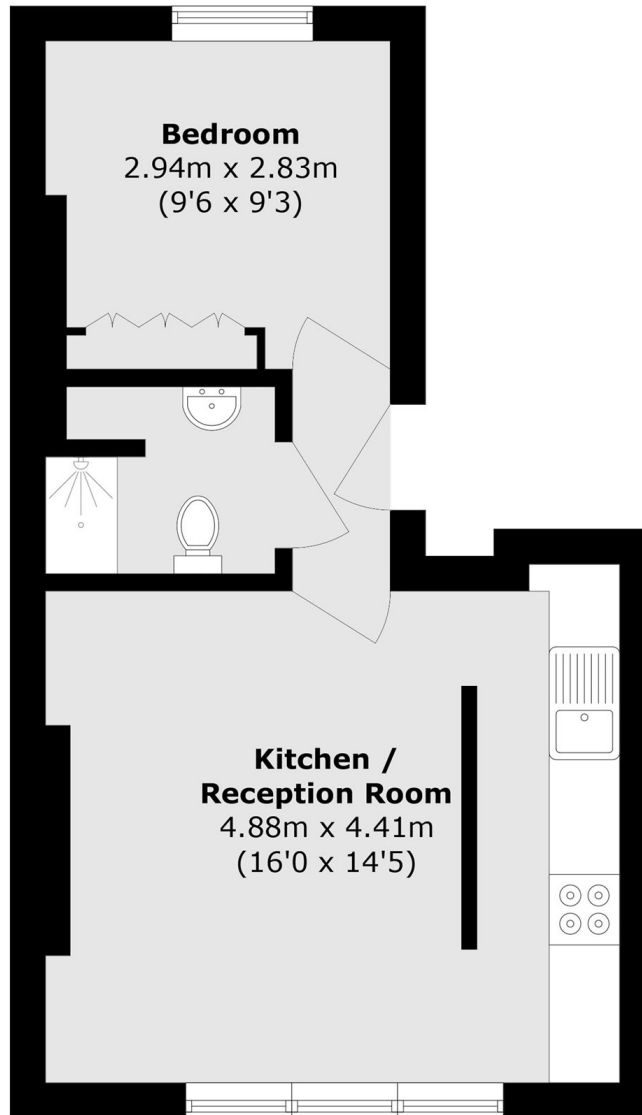
A well-presented one-bedroom apartment on Chiswick High Road, featuring a bright semi open-plan reception and kitchen area, ideal for professionals or couples.

Located on Chiswick High Road, within half a mile of Gunnersbury and Kew Bridge stations, close to local cafés, restaurants and pubs.

### Features

- One Bedroom
- High Ceilings
- Kew Bridge
- Integrated Kitchen
- Permit Parking
- Close To Transport

# Chiswick High Road, London, W4



Total area (approx.): 34.3 sq. m (369.2 sq. ft)