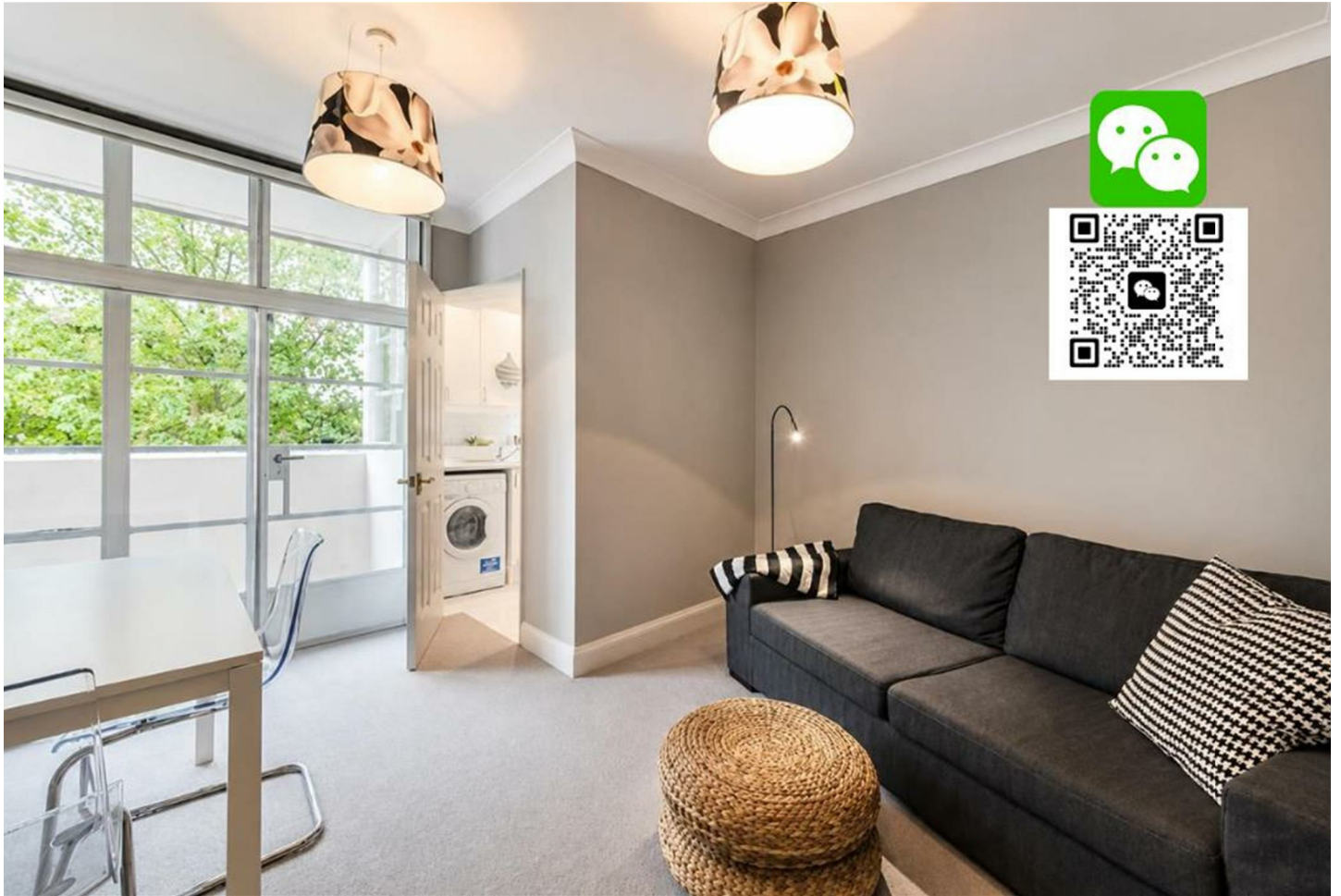


# pomp

properties



Sloane Avenue, Chelsea

£550 Per Week



Set within the well known Sloane Avenue Mansions with secure access and porter service. Offering a neutral finish throughout the double bedroom with built in storage, modern shower suite, carpeted lounge leading to the balcony and separate kitchen equipped with all appliances. Heating & Hot Water Included

Sloane Avenue Mansions is a well-run, art-deco building conveniently situated in the heart of Chelsea. There are a wide array of shops and restaurants nearby on the Kings Road and Brompton Cross, along with the museums at South Kensington. The underground can be accessed at Sloane Square (Circle/District) and South Kensington (Piccadilly/Circle/District), both of which are within walking distance.

WeChat - adxie88

- One Bedroom Flat
- Neutral Finish
- Heating & Hot Water Included
- Second Floor
- Porter and Lift Service
- Nearby Kings Road

