



Wrights
01225 755553

Silver Street Lane, Trowbridge, Wiltshire, BA14 0JR

£470,000

Situation

The property is situated on the sought after Silver Street Lane, on the Frome side of Trowbridge. Local amenities include Primary and Secondary schools, a Tesco Express convenience store and a popular public house.

Nearby, the Popular Southwick Country Park offers free access to over 100 acres of countryside walks. The town centre of Trowbridge is within easy reach, providing excellent shopping and leisure facilities, a multiplex cinema, numerous pubs and restaurants.

Access to London by train is direct via Westbury (5 miles) and indirect via Trowbridge (2 miles). The World Heritage City of Bath is also just 13 miles away, famed for its shopping, period buildings and many places of cultural interest.



Extended and beautifully presented four bedroom bungalow

Desirable location on the Frome side of Trowbridge

Kitchen/diner with island unit

Utility room

Garage for storage

En-suite to the master bedroom

Gas central heating and PVCu double glazing

Spacious front garden and driveway parking for several vehicles

Generous enclosed rear garden

Viewing highly recommended



This beautifully presented four bedroom bungalow is situated on the desirable Silver Street Lane, close to many local amenities and schools.

Features include a spacious kitchen/diner with island unit, separate utility room, spacious lounge, four generous bedrooms, en-suite to the master bedroom and family bathroom with four piece suite. The property also offers gas central heating, PVCu double glazing and garage (for storage only).

Externally the property offers a generous front garden and driveway providing off road parking for several vehicles, as well as a spacious enclosed rear garden.

Viewing highly recommended!

The property comprises

Entrance Hall

With composite front door, tiled flooring, radiator, two built in storage cupboards, inset ceiling spotlights and loft access (the loft is part boarded with pull down ladder, light and the gas combi boiler).

Lounge 16' 3" x 13' 6" (4.95m x 4.11m)

With wood laminate flooring, designer radiator, inset ceiling spotlights and PVCu double glazed window with wooden shutters to the front. Open plan into...

Kitchen/Diner 12' 4" x 19' 7" (3.77m x 5.96m)

With tiled flooring, a range of eye level and base units, granite worktops with upstands and tiled splash backs, island unit with granite top and breakfast bar, integrated eye level and microwave, induction hob with extractor hood over, integrated dishwasher and wine cooler, space for fridge/freezer, one and a half bowl ceramic sink and drainer unit, two designer radiator's, inset spotlights, PVCu double glazed window to the rear, PVCu back door and PVCu french doors opening onto the rear garden.

Utility room 6' 6" x 12' 8" (1.97m x 3.85m)

With designer radiator, a range of eye level and base units, with worktops over and space for washing machine and tumble dryer.

Bedroom 1 14' 0" x 11' 3" (4.27m x 3.44m)

With designer radiator and PVCu double glazed window with wooden shutters to the front.

En-suite

With fully tiled floor and walls, white suite comprising large walk in shower, hand basin with vanity unit and close coupled W.C, radiator with heated towel rail, inset ceiling spotlights and obscured PVCu double glazed window to the side.

Bedroom 2 13' 0" x 8' 6" (3.97m x 2.58m)

With designer radiator, inset ceiling spotlights and PVCu double glazed window to the rear.

Bedroom 3 9' 11" x 8' 11" (3.01m x 2.71m)

With designer radiator and PVCu double glazed window to the rear.

Bedroom 4 9' 11" x 7' 7" (3.01m x 2.32m)

With designer radiator and PVCu double glazed window to the rear.

Bathroom

With fully tiled floor and walls, four-piece suite comprising large walk in shower enclosure, bath, hand basin with vanity unit and W.C, heated towel rail, inset ceiling spotlights and obscured PVCu double glazed window to the side.

Recent improvements

A range of improvements have been carried out by the current owners. The main roof has been re-battened and felted, while the garage benefits from a replacement EPDM roof installed in January 2021. A number of windows and doors have also been updated in recent years, including those installed as part of the extensions completed between 2021 - 2022, along with the French doors, lounge window and an additional rear bedroom window fitted in March 2023. More recently, the bathroom and one rear bedroom have been refitted in January 2026, further enhancing the overall standard of the accommodation. A new integrated oven and dishwasher were also fitted in 2025.

Externally

To the front

A block paved driveway and an area laid to gravel provides off road parking for several vehicles. There is also a large enclosed front garden, laid to gravel.

Garage (for storage) 6' 3" x 12' 8" (1.90m x 3.85m)

With PVCu door to the front, up and over door, power, light and internal door to the Utility room.

To the rear

The enclosed rear garden offers a spacious block paved seating area and a second seating area laid to gravel with a pergola over, an area laid to lawn and a path providing access to the front of the property.

Council tax

The property is currently in council tax band D.

Tenure

The property is sold as freehold.

Services

Mains gas, electricity, water and drainage are connected. The property is heated by a gas fired central heating boiler to radiators. Please note that the Agent has not tested any appliances.

Broadband

Ultrafast broadband is available (source - Ofcom) Predicted maximum download speed - 1000Mbps

Mobile phone coverage

Outdoor coverage is likely - source Ofcom.

EXCLUSIVE MORTGAGE ADVICE
FOR WRIGHTS RESIDENTIAL WITH

GEM MORTGAGES

Gemma Coleman - Telephone: 01225 755553 | Mobile: 07717 749944 | Email: gemma@gemmortgages.co.uk

CALL NOW FOR FREE
MORTGAGE ADVICE
THAT YOU CAN TRUST



Wrights
01225 755553

info@wrightsresidential.co.uk | www.wrightsresidential.co.uk

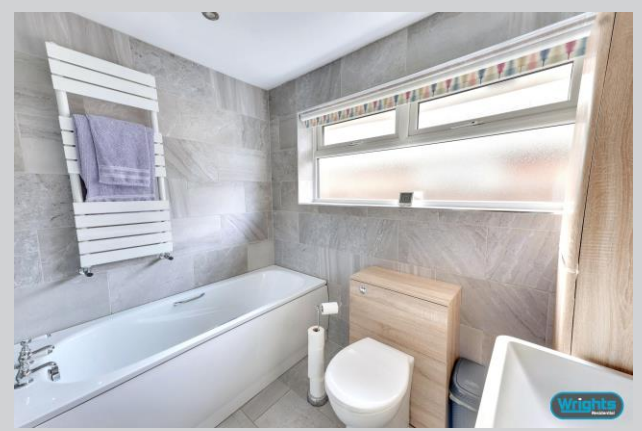
01225 755553



Wrights
01225 755553

info@wrightsresidential.co.uk | www.wrightsresidential.co.uk

01225 755553



Wrights
01225 755553

info@wrightsresidential.co.uk | www.wrightsresidential.co.uk

01225 755553



Wrights
01225 755553

info@wrightsresidential.co.uk | www.wrightsresidential.co.uk

01225 755553

EXCLUSIVE MORTGAGE ADVICE
FOR WRIGHTS RESIDENTIAL WITH

GEMMA MORTGAGES

Gemma Coleman - Telephone: 01225 755553 | Mobile: 07717 749944 | Email: gemma@gemmortgages.co.uk

CALL NOW FOR FREE
MORTGAGE ADVICE
THAT YOU CAN TRUST



Wrights
01225 755553

info@wrightsresidential.co.uk | www.wrightsresidential.co.uk

01225 755553



Wrights
01225 755553

info@wrightsresidential.co.uk | www.wrightsresidential.co.uk

01225 755553

Ground Floor

Approx. 128.2 sq. metres (1380.3 sq. feet)



Total area: approx. 128.2 sq. metres (1380.3 sq. feet)

While every reasonable effort is made to ensure the accuracy of descriptions and content, we should make you aware of the following guidance or limitations: The Agent has not tested any apparatus, equipment, fixtures or fittings or services and so cannot verify that they are in working order or fit for the purpose. A Buyer is advised to obtain verification from their Solicitor or Surveyor. References to the Tenure of a Property are based on information supplied by the Seller. The Agent has not had sight of the title documents. A Buyer is advised to obtain verification from their Solicitor. Items shown in photographs are NOT included unless specifically confirmed with the Vendor's solicitor. They may however be available by separate negotiation. The room sizes are approximate and only intended as general guidance. You must verify the dimensions carefully to satisfy yourself of their accuracy.

Disclaimer

T 01225 755553
E info@wrightsresidential.co.uk
W www.wrightsresidential.co.uk
A 24 Fore Street, Trowbridge, Wiltshire, BA14 8ER

Wrights

