

## London Road, TW1

£399,950

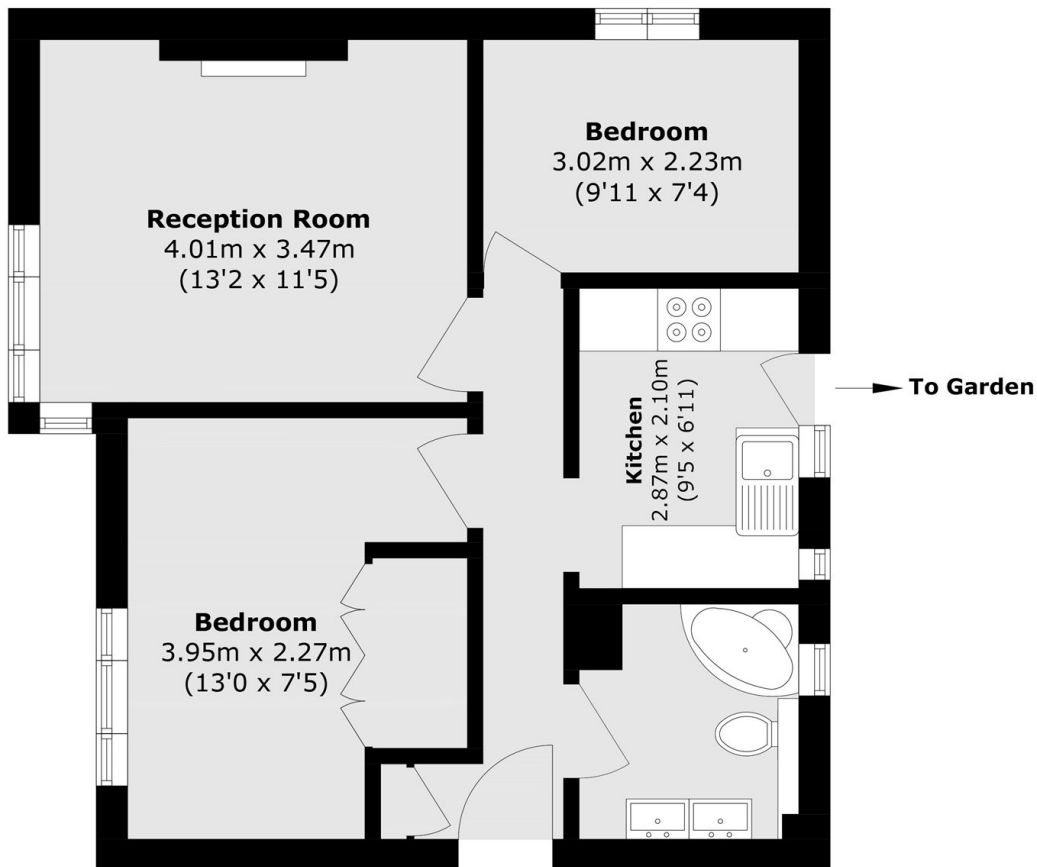
A modern two bedroom ground floor apartment with a bright and spacious living room, modern kitchen and also benefits from residents parking. This property is offered to the market with no onward chain.

Situated in a most desirable location Cole Court Lodge is close to Twickenham mainline station and town centre which has a vast array of amenities including Waitrose.

### Features

- Two Double Bedrooms
- Modern Apartment
- No Onward Chain
- Residents Parking
- Share Of Freehold
- Communal Gardens

# London Road, Twickenham, TW1



Total area (approx.): 52.0 sq. m (559.7 sq. ft)