

## Charlotte Street, W1T

£704 Per week

A modern one double bedroom property located on the desired Charlotte Street. This property has wooden floors throughout, a walk in shower room and an open plan living and kitchen area.

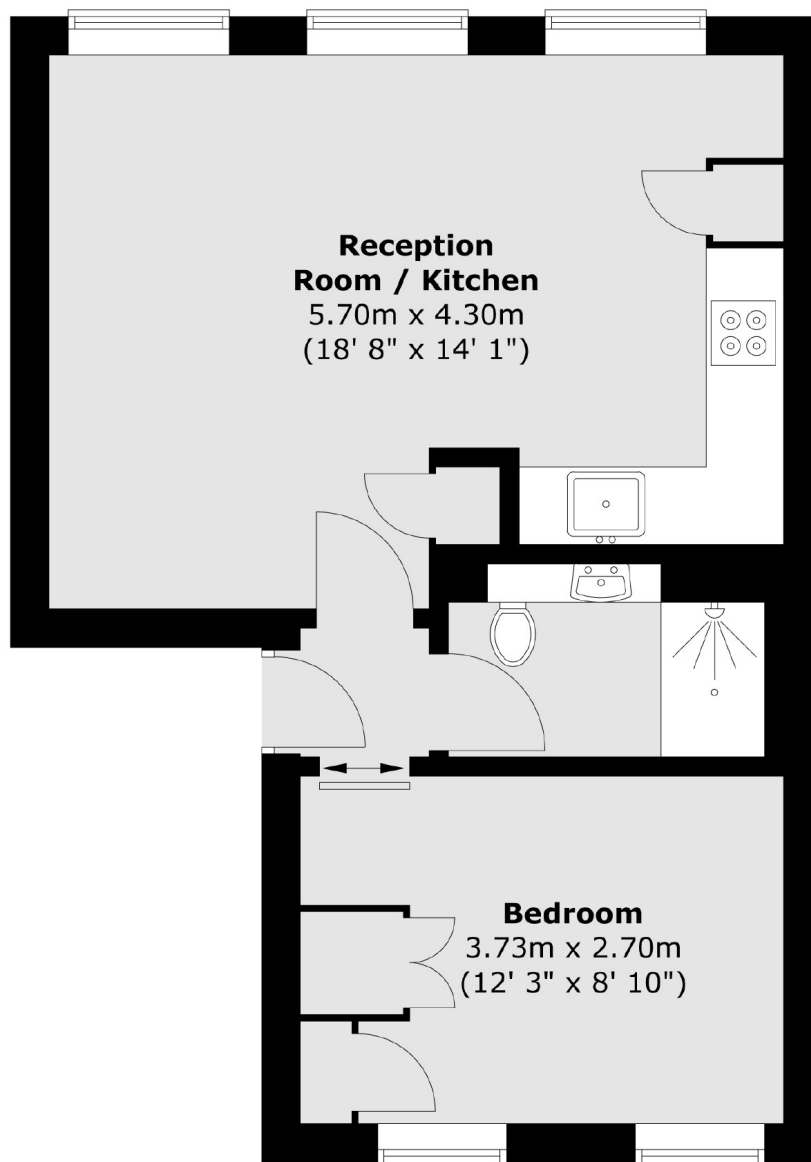
Charlotte Street is walking distance to Oxford Street which is surrounded by an abundance of restaurants, bars and shops. Warren Street and Tottenham Court Road are also close by.

### Features

- Modern Interior Throughout
- One Double Bedroom
- Top Floor
- Walk-in Shower
- Open Plan
- Desired Location

# Charlotte Street, London, W1T

## Third Floor



Total area (approx.) : 39.7 sq. m (427 sq. ft)