



Elvaston Place, SW7

£1,300 Per week

**Dexters**



## Elvaston Place, SW7

An exceptional, newly refurbished two-bedroom residence located in a highly desirable area. This elegant property offers two spacious double bedrooms, refined wooden flooring throughout, a newly installed contemporary kitchen, and a stylish modern bathroom. It is ideally suited to discerning professionals and couples seeking comfort, quality, and sophistication in a prestigious setting.

Elvaston Place is an elegant residential street, ideally situated just moments from the distinctive selection of boutiques, cafés, and restaurants along Gloucester Road. Its prime location also provides convenient access to the expansive green spaces of Hyde Park, offering a perfect balance between vibrant city living and tranquil outdoor surroundings.

### Features

- 2 bedroom
- 2 bathroom
- Recently refurbished
- Open plan kitchen
- Prime Location
- Wood floors





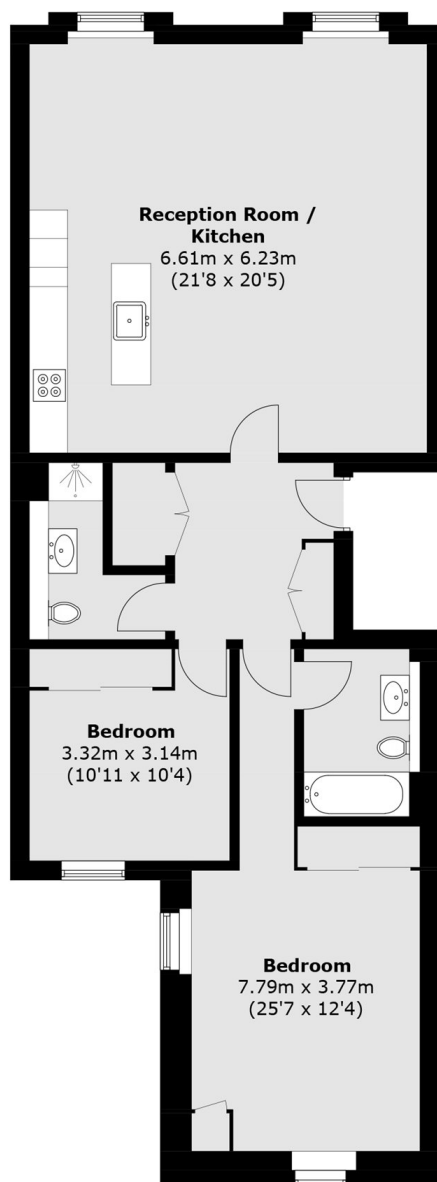








# Elvaston Place, London, SW7



Total area (approx.): 91.8 sq. m (988.1 sq. ft)

## Dexters

South Kensington  
144 Old Brompton Road  
London  
SW7 4NR  
Lettings  
020 7244 7711

Energy Rating: C. We aim to make our particulars both accurate and reliable. However they are not guaranteed; nor do they form part of an offer or contract. If you require clarification on any points then please contact us, especially if you're traveling some distance to view. Please note that appliances and heating systems have not been tested and therefore no warranties can be given as to their good working order.

 **RICS** | Regulated  
Estate Agent  
and Letting Agent

[dexters.co.uk](https://www.dexters.co.uk)