



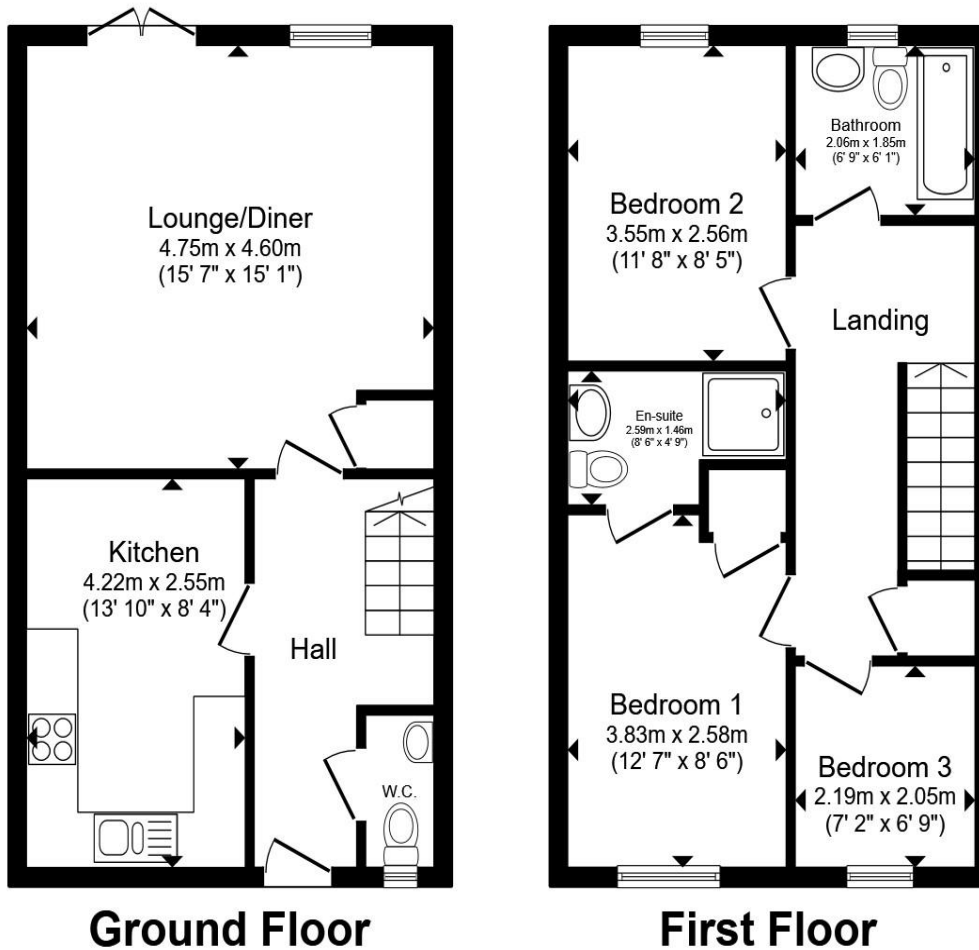
Fenmen Place, Wisbech PE13 3FA

Welcome to

Fenmen Place, Wisbech

Positioned in the quieter cul-de-sac part of Fenmen Place in Wisbech, this well-presented three bedroom mid-terrace home offers modern, practical living in a highly convenient location. The ground floor comprises a welcoming entrance area with a downstairs WC, a modern fitted kitchen, and a generous lounge - a real focal point of the home - featuring double glass doors opening directly onto the rear garden, allowing natural light to flow through and creating an ideal space for both relaxing and entertaining. Upstairs, there are three well-proportioned bedrooms, including a master bedroom with its own en-suite shower room. A separate family bathroom serves the remaining bedrooms. Externally, the property benefits from a lovely enclosed rear garden - perfect for outdoor dining or children to play - along with two allocated parking spaces. The loft has also been partially boarded, providing valuable additional storage space. A fantastic opportunity in a popular residential area - early viewing is strongly recommended.





Entrance Hall

Kitchen

Lounge / Diner

Downstairs Wc

First Floor Landing

Bedroom One

En-Suite

Bedroom Two

Bedroom Three

Bathroom

Agents Note:

'The sellers advise that they currently pay £296.76 per annum as a contribution towards upkeep.' (this currently comprises £24.73 per calendar month in respect of a service charge payable to a management company for maintaining the common parts serving the estate).

'Heating to the property is served by Electric Heat Pump. Please contact the branch for more details'

Total floor area 84.7 m² (912 sq.ft.) approx

This floor plan is for illustrative purposes only. It is not drawn to scale. Any measurements, floor areas (including any total floor area), openings and orientation are approximate. No details are guaranteed, they cannot be relied upon for any purpose and they do not form part of any agreement. No liability is taken for any error, omission or misstatement. A party must rely upon its own inspection(s). Powered by www.propertybox.io

Welcome to

Fenmen Place, Wisbech

- Three bedroom mid-terrace home
- Quiet cul-de-sac position
- Two allocated parking spaces
- Downstairs WC
- Spacious lounge with double doors to garden
- Modern fitted kitchen
- Master bedroom with en-suite
- Popular residential location

Tenure: Freehold EPC Rating: B

Council Tax Band: B

£200,000



Please note the marker reflects the postcode not the actual property

view this property online williamhbrown.co.uk/Property/WSB128260



Property Ref:
WSB128260 - 0005

1. MONEY LAUNDERING REGULATIONS Intending purchasers will be asked to produce identification documentation at a later stage and we would ask for your co-operation in order that there is no delay in agreeing the sale. 2. These particulars do not constitute part or all of an offer or contract. 3. The measurements indicated are supplied for guidance only and as such must be considered incorrect. Potential buyers are advised to recheck measurements before committing to any expense. 4. We have not tested any apparatus, equipment, fixtures or services and it is in the buyers interest to check the working condition of any appliances. 5. Where an EPC, or a Home Report (Scotland only) is held for this property, it is available for inspection at the branch by appointment. If you require a printed version of a Home Report, you will need to pay a reasonable production charge reflecting printing and other costs. 6. We are not able to offer an opinion either written or verbal on the content of these reports and this must be obtained from your legal representative. 7. Whilst we take care in preparing these reports, a buyer should ensure that his/her legal representative confirms as soon as possible all matters relating to title including the extent and boundaries of the property and other important matters before exchange of contracts.

William H Brown is a trading name of Sequence (UK) Limited which is registered in England and Wales under company number 4268443, Registered Office is Cumbria House, 16-20 Hockliffe Street, Leighton Buzzard, Bedfordshire, LU7 1GN. VAT Registration Number is 500 2481 05.



william h brown



01945 464451



Wisbech@williamhbrown.co.uk



20 High Street, WISBECH, Cambridgeshire,
PE13 1DE



williamhbrown.co.uk