



Updown Hill, Windlesham

£2,400 pcm



Updown Hill, Windlesham, Surrey

Extended three bedroom semi detached cottage in Windlesham with lovely open plan kitchen/breakfast room with rangemaster and situated within walking distance of local shops and the Field of Remembrance.

FEATURES

- Walking distance to Field of Remembrance
- Short walk to village shops
- Double glazing
- Gas central heating

ACCOMODATION

- Entrance hall
- Sitting room with wood burning stove
- Dining room
- Kitchen/breakfast room
- Downstairs cloakroom
- Three bedrooms
- Bathroom with separate bath and shower

OUTSIDE

- Driveway parking
- Shed with office attached
- Attractive garden with patio

FURNISHED/UNFURNISHED

Unfurnished

AVAILABLE

8th May 2026

COUNCIL TAX

Surrey Heath Borough Council - Band E

DEPOSIT PAYABLE

£2,765

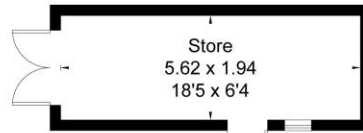
EPC RATING

D

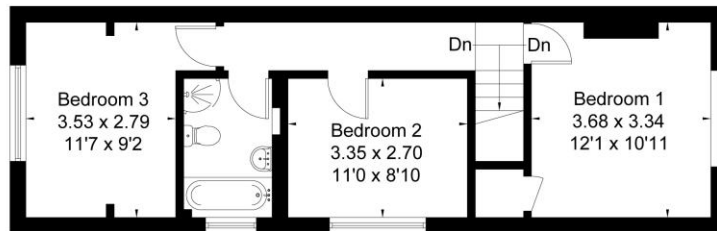




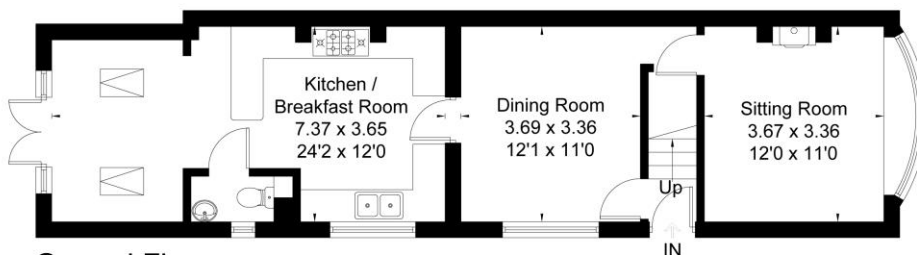
Approximate Area = 105.3 sq m / 1133 sq ft
Store = 10.9 sq m / 117 sq ft
Total = 116.2 sq m / 1250 sq ft
Including Limited Use Area (2.3 sq m / 25 sq ft)



(Not Shown In Actual Location / Orientation)



First Floor



Ground Floor

Surveyed and drawn in accordance with the International Property Measurement Standards (IPMS 2: Residential)
fourwalls-group.com 246016

Disclaimer: We wish to inform prospective purchasers and tenants that we have prepared these particulars as a general guide. We have not carried out a detailed survey, nor tested the services, appliances and specific fittings. Room sizes are approximate and rounded: they are taken between internal wall surfaces and therefore include cupboards / shelves, etc.

Postcode for sat nav: GU20 6DX



The Old Dairy, 7 Updown Hill, Windlesham, Surrey GU20 6AF
enquiries@newtonrowe.co.uk | 01276 986900