



Offord Road, N1

£950,000

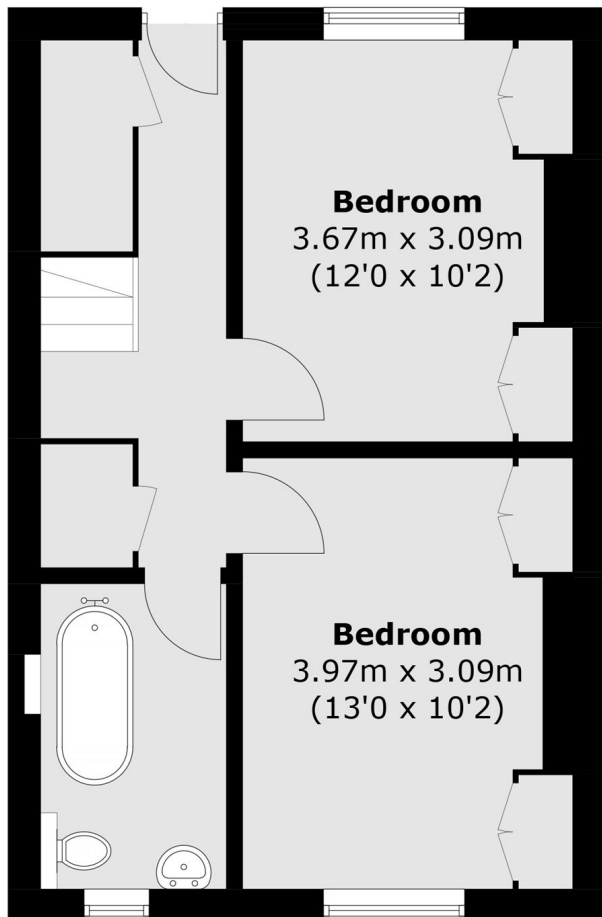
A well-presented two-bedroom home split across two floors. The ground floor features a bright reception room and a recently renovated kitchen. The lower ground floor has two generously sized double bedrooms and a family bathroom as well as access to a private south facing garden.

Both Highbury & Islington and Caledonian Road & Barnsbury Stations are less than half a mile away, providing access to the Victoria, Overground and National Rail Lines. The shops, bars and restaurants of Islington's Upper Street are also within easy reach.

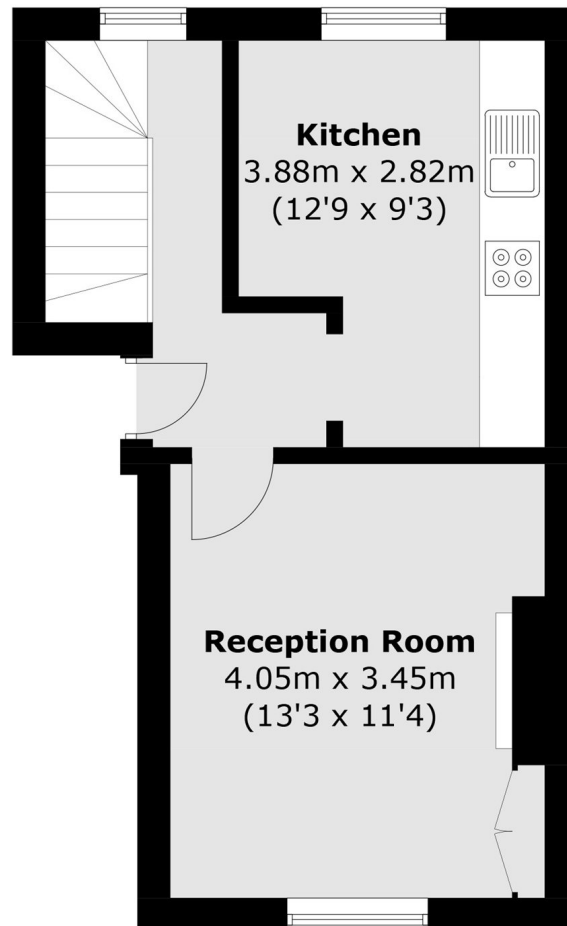
Features

- Two Bedrooms
- Split Level
- Separate Kitchen
- Share Of Freehold
- South Facing Garden
- Period Conversion

Offord Road, London, N1



Lower Ground Floor



Ground Floor

Total area (approx.): 68.9 sq. m (741.6 sq. ft)