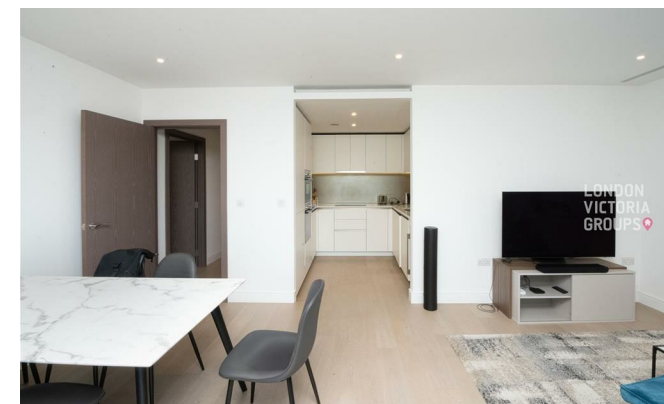


**LONDON  
VICTORIA  
GROUPS** 



## Faulkner House, Tierney Lane

, London W6 9AT

- Two luxury bathrooms with premium finishes
  - Bright open-plan reception
    - Gym, pool, spa
- Moments from Hammersmith Underground Station
  - CTB-F
- Underfloor heating
- 24-hour concierge
  - Cinema
  - EPC-B

**£900,000 Leasehold**

Local Authority **Hammersmith  
And Fulham**  
Council Tax Band **E**  
EPC Rating **B**



**London Office Office**  
Spaces Victoria, 25 Wilton Road, Pimlico,  
London, SW1V 1LW

**Contact**  
020 3084 3094  
[XL@londonvictoriagroups.co.uk](mailto:XL@londonvictoriagroups.co.uk)  
[www.londonvictoriagroups.co.uk](http://www.londonvictoriagroups.co.uk)

Agents Note: Whilst every care has been taken to prepare these particulars, they are for guidance purposes only. All measurements are approximate and for general guidance purposes only and whilst every care has been taken to ensure accuracy, they should not be relied upon and potential buyers/tenants are advised to recheck the measurements.

