



2 Hereford Road, London, E3

BUTLER & STAG



Immaculately presented one bedroom apartment situated within a modern gated development in vibrant Bow.



- Modern One Bedroom Apartment
- Secure Gated Development
- Third Floor with a Lift
- Open-Plan Living Space / Kitchen
- Sought-After Bow Location
- Close to Transport Links & Victoria Park
- Furnished
- Available from 4th July 2026

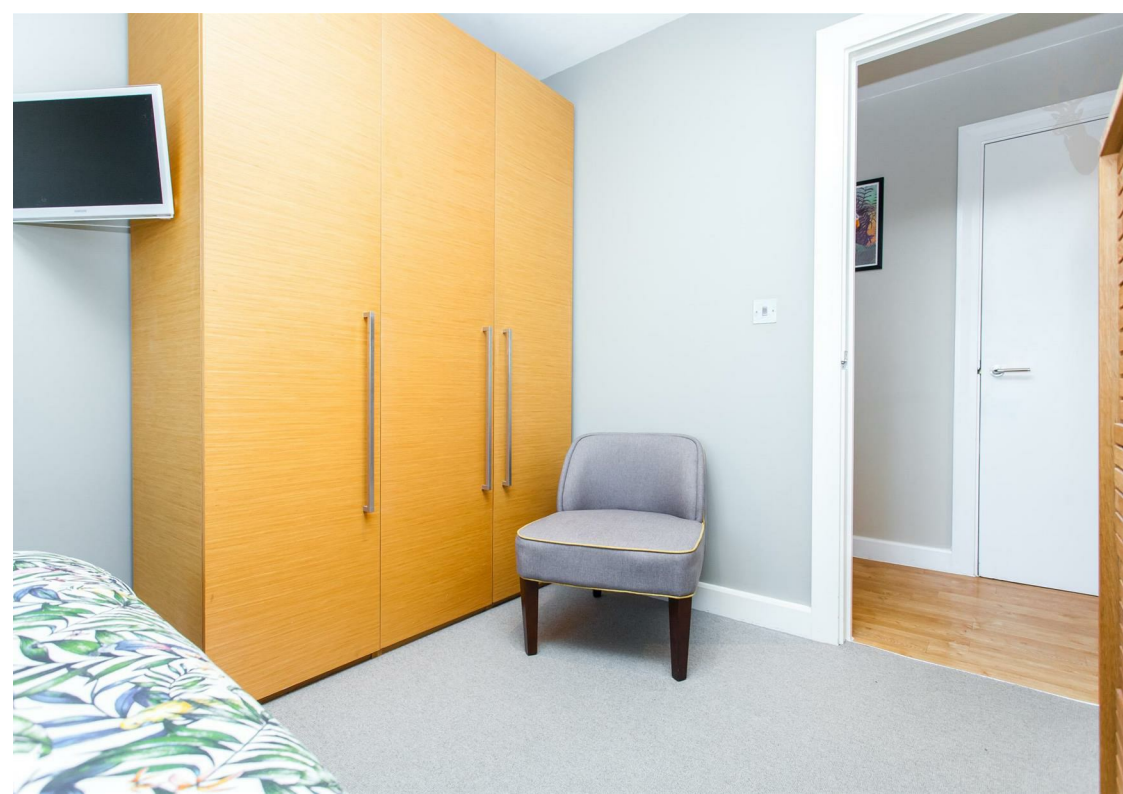
Positioned on the third floor of this secure and well-maintained block with a lift, the location offers easy access to a range of amenities on Roman Road, the wonderful Victoria Park and excellent transport links, including Bow Road and Mile End underground stations.

The apartment itself measures just under 600 Sq/Ft and features a welcoming living and dining space, open-plan to a recessed kitchen, a generous double bedroom, contemporary shower room and a large hallway storage cupboard.

Perfectly suited to a single professional or couple, this furnished property is available from 4th July 2026.

EPC Rating D
Council Tax Band C

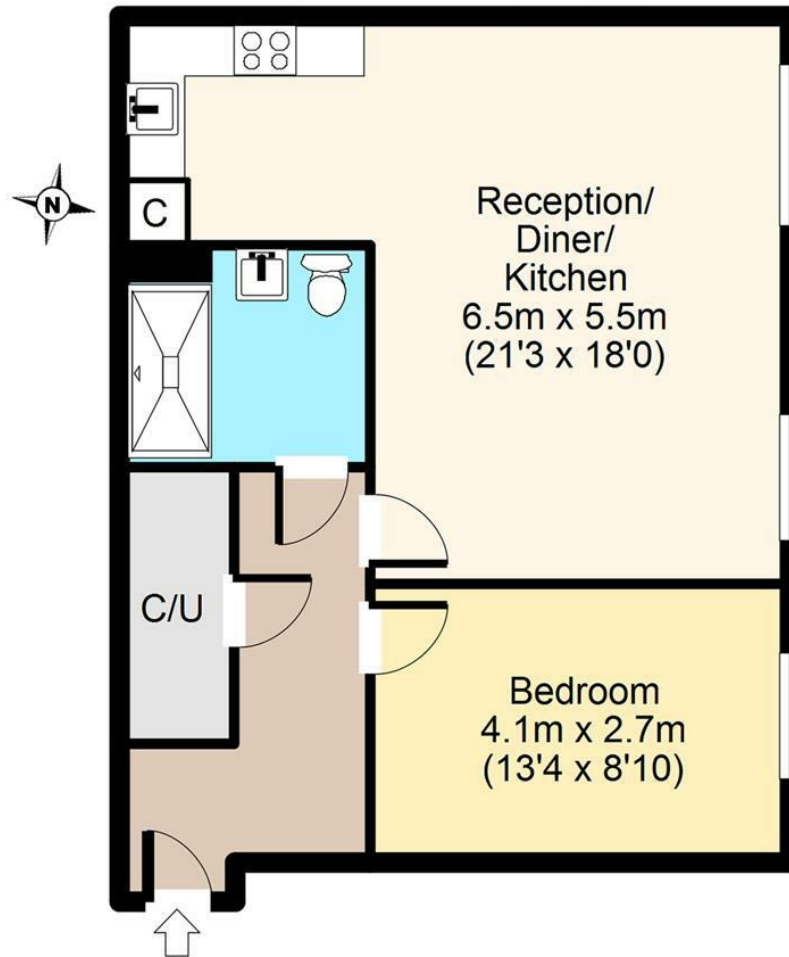




Hereford Rd, E3

First Floor

Approx. 54 sq. meters (578 sq. feet)



Total area: approx. 54 sq. meters (578 sq. feet)
For illustration purposes only - not to scale

BUTLER & STAG

☎ 020 8102 1236

🏠 508 Roman Road, Bow, London, E3 5LU

✉ bow@butlerandstag.com

www.butlerandstag.uk

IMPORTANT NOTICE - These particulars have been prepared in good faith and they are not intended to constitute part of an offer or contract. We have not performed a structural survey on this property and the services, appliances and specific fittings have not been tested. All photographs, measurements, floor plans and distances referred to are given as a guide and should not be relied upon.