

CELEBRATING

40

YEARS



glentree



, Dunstan Road, NW11

Located on Dunstan Road in Golders Green, this spacious 2,870 sq ft very high end home offers 6 bedrooms and 3 bathrooms. Featuring a huge eat-in kitchen/family room with air conditioning and a modern kosher kitchen with two sinks, plus a generous through lounge/diner. The principal bedroom benefits from an en suite and A/C. Additional highlights include off-street parking for two cars and a beautifully landscaped garden. Ideally positioned close to the station, synagogues, and the high street.

Avilable May 2026
EPC Rating 6
Long Let

£1,823 Per Week



SALES 020 8458 7311
RENTALS 020 8209 1144
FAX 020 8209 0307

E sales@glentree.com
E rentals@glentree.com
W www.glentree.com

Glentree Estates Ltd
698 Finchley Road
London NW11 7NE

Dunstan Road NW 11

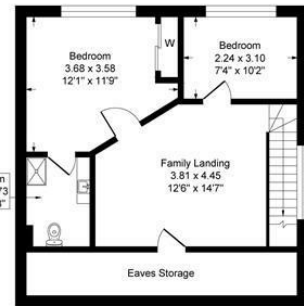
Approximate Gross Internal Floor Area = 276.2 q m / 2973 sq ft



Ground Floor



First Floor



Second Floor

Illustration for identification purposes only, measurements are approximate, not to scale.

Energy Efficiency Rating		Current	Potential
Very energy efficient - lower running costs			
(92 plus) A			
(81-91) B			
(69-80) C			
(55-68) D			
(39-54) E			
(21-38) F			
(1-20) G			
Not energy efficient - higher running costs			
England & Wales		69	79
EU Directive 2002/91/EC			

Environmental Impact (CO ₂) Rating		Current	Potential
Very environmentally friendly - lower CO ₂ emissions			
(92 plus) A			
(81-91) B			
(69-80) C			
(55-68) D			
(39-54) E			
(21-38) F			
(1-20) G			
Not environmentally friendly - higher CO ₂ emissions			
England & Wales			
EU Directive 2002/91/EC			

