



Wigpool, Mitcheldean

£795,000

🛏️ 4 🚗 2 🚗 2

- Extended four-bedroom detached family residence
- Beautifully maintained wraparound gardens within a private enclosed plot
- Exceptional contemporary living spaces designed for modern family life
- Privileged setting adjoining a nature reserve and surrounded by mature woodlands
- Generous off-road parking with detached double carport and versatile first-floor studio/office space
- Freehold property, Council tax band D, EPC Rating of TBC

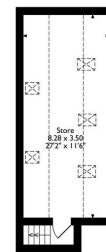


Nestled on the edge of a picturesque nature reserve and surrounded by mature woodland, this impressive and substantially extended four-bedroom detached residence enjoys a truly enviable setting combining privacy, tranquillity and convenience. Occupying a generous enclosed plot with beautifully maintained wraparound gardens, the property offers exceptional living accommodation designed to suit modern family life. The spacious and versatile interior is complemented by extensive off-road parking, a detached double carport and a valuable first-floor studio/office space, ideal for home working, hobbies or ancillary accommodation. Rarely do homes in such a sought-after woodland setting become available, offering the perfect balance of contemporary living and natural surroundings, all within easy reach of local amenities, transport links and highly regarded schools.

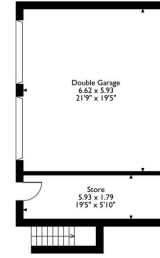




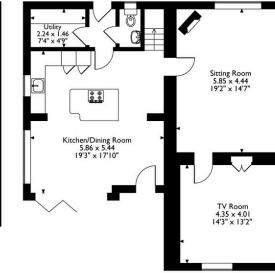
Pit House, Wigpool, Mitcheldean, Gloucestershire
 Approximate Gross Internal Area
 Main House = 161 Sq M/1733 Sq Ft
 Garage = 51 Sq M/549 Sq Ft
 Store = 11 Sq M/118 Sq Ft
 Total = 223 Sq M/2400 Sq Ft



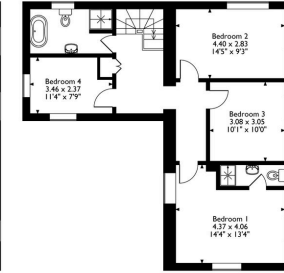
Garage First Floor



Garage Ground Floor

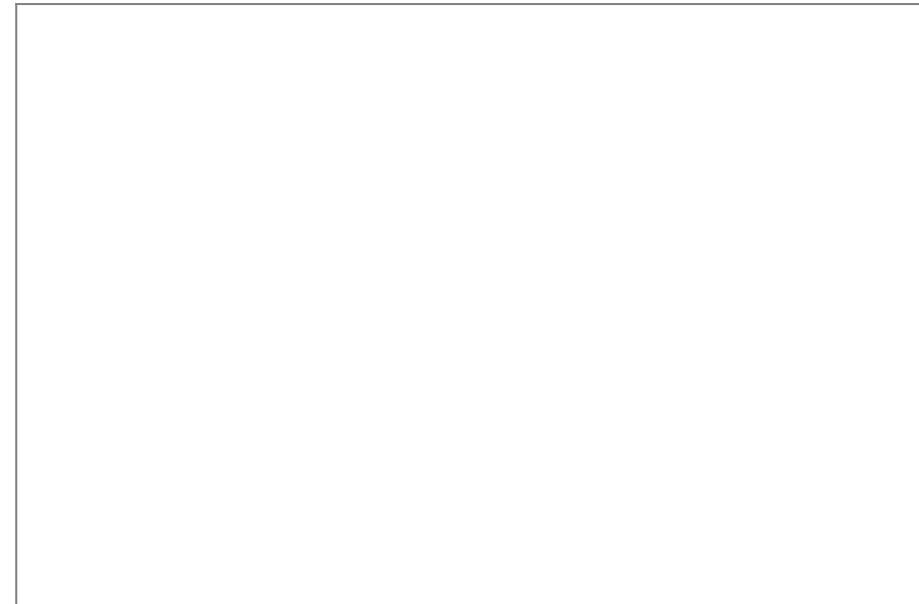


Ground Floor



First Floor

Please note that the location of doors, windows and other items are approximate and this floorplan is to be used for illustrative purposes only. Unauthorized reproduction is prohibited.



Hattons Estate Agents, 4 Lords Hil, Coleford, Gloucestershire, GL16 8BD

01594 833400 | office@hattonsestateagents.com | hattonsestateagents.com

