



Guide Price

£475,000

Freehold

3x  2x  1x 

**Calderwood, Gravesend,
Kent, DA12**

OVER 60?

Secure this property
for up to **59% less!**

Wards
Helping you move forwards



Main features

- Charming bungalow in a sought after location
- Garage and private driveway
- En-suite shower room to Bedroom 1
- Beautifully maintained rear garden with a sunny aspect
- Prime location close to schools, local shops, parks and transport links

Accommodation

GROUND FLOOR

Entrance Hall

Lounge: 20'10 into bay x 11'6 (6.35m x 3.51m)

Kitchen : 14'9 (4.50m) x 11'10 (3.61m) narrowing to 8'6 (2.59m)

Bedroom 3: 9'6 x 6'9 (2.90m x 2.06m)

Bedroom 1: 12'4 x 8'8 (3.76m x 2.64m)

En-suite Shower Room

Shower Room

Bedroom 2: 9'10 x 8'10 (3.00m x 2.69m)

OUTSIDE

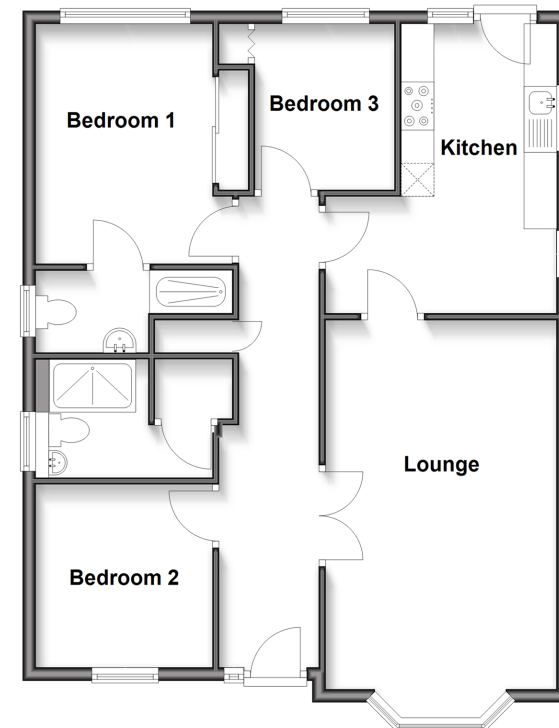
Driveway

Garage

Rear Garden

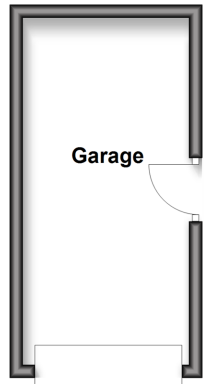
Ground Floor

Approx. 79.7 sq. metres (857.6 sq. feet)



Outbuilding

Approx. 13.4 sq. metres (144.0 sq. feet)



Call Gravesend - 01474 352417 ■ wardsofkent.co.uk

■ Legal advice should be taken to verify fixtures/fittings, planning, alterations and/or lease details
 ■ Through a Homewise Home For Life Plan people aged 60+ can secure this property for up to 59% less, by purchasing a Lifetime Lease

■ Appliances & services are untested, dimensions are approximate and floor plans are not to scale



11138043/20260119/KG/SB