



Guide Price
£130,000

Leasehold

1x  1x  1x 

**Park View Lodge, East
Street, Faversham, Kent,
ME13**

Wards
Helping you move forwards



Main features

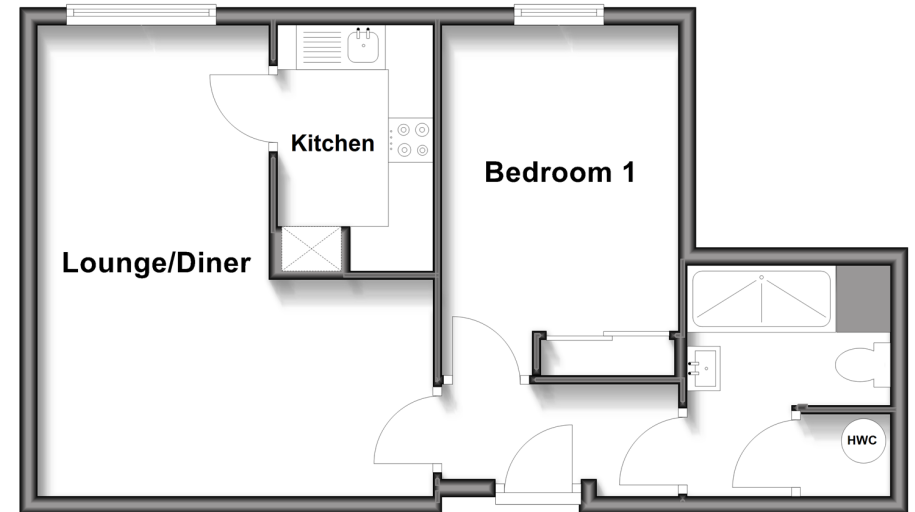
- **Stunning retirement property in quiet development**
- **Modern interior with upgraded shower room**
- **On-site residents facilities including communal lounge and laundry room**
- **Walking distance to shops, local park and mainline station**
- **No onward chain**

Accommodation

FIRST FLOOR

- Entrance Hall
- Lounge/Diner: 17'6 maximum x 14'5 (5.34m x 4.40m)
- Kitchen: 9'0 x 5'8 (2.75m x 1.73m)
- Bedroom 1: 13'1 x 8'10 (3.99m x 2.69m)
- Shower Room

First Floor
Approx. 44.0 sq. metres (474.0 sq. feet)



Call Faversham - 01795 535517 ■ wardsof Kent.co.uk

■ Legal advice should be taken to verify fixtures/fittings, planning, alterations and/or lease details

■ Appliances & services are untested, dimensions are approximate and floor plans are not to scale



10832415/20251222/HR/PJ