



PENNARD ROAD, W12

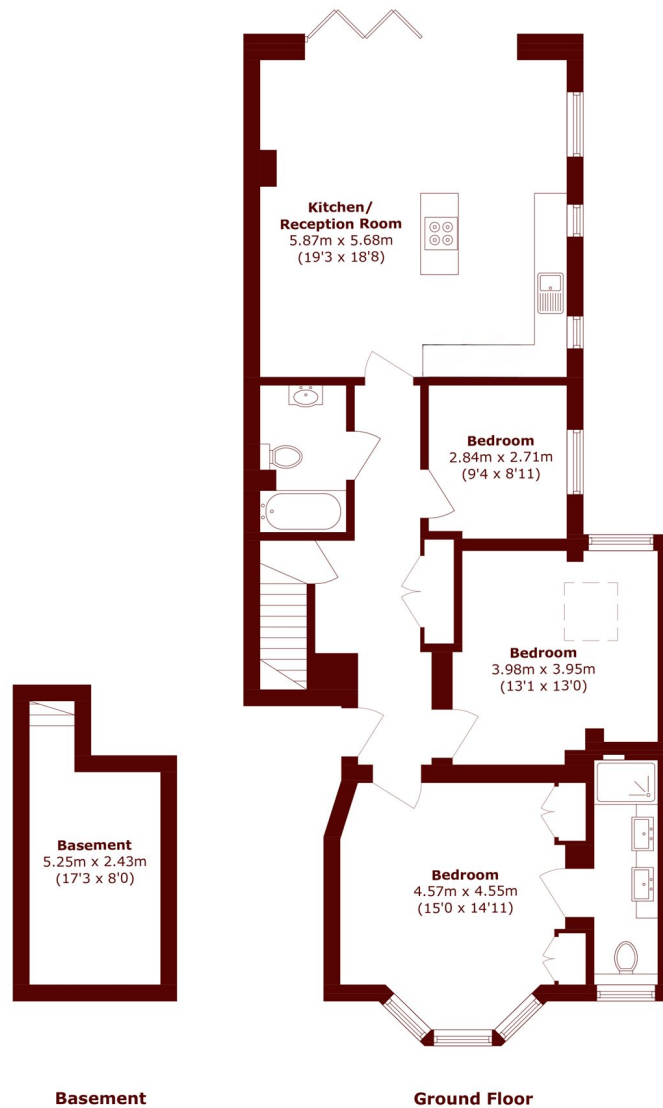
£875,000

A bright and exceptionally spacious three-bedroom ground floor flat set within an attractive Victorian conversion. Offering over 1,200 sq ft of beautifully presented accommodation, this impressive home features a

Three Bedrooms
Ground Floor
No Onwards Chain

Private Garden
Westfield Shopping Centre
Excellent Transport Links

STEP INSIDE PENNARD ROAD



Total area (approx.): 114.3 sq. m (1230.3 sq. ft)

Brook Green
020 7605 7765

Energy Rating: We aim to make our particulars both accurate and reliable. However, they are not guaranteed; nor do they form part of an offer or contract. If you require clarification on any points then please contact us, especially if you're traveling some distance to view. Please note that appliances and heating systems have not been tested and therefore no warranties can be given as to their good working order

MARSH &
PARSONS