

abbotFox

FOR LET  
01633 660000  
abbotFox  
Sales | Lettings | Business | Land & New Homes

FOR SALE  
01633 660000  
abbotFox  
Sales | Lettings | Business | Land & New Homes

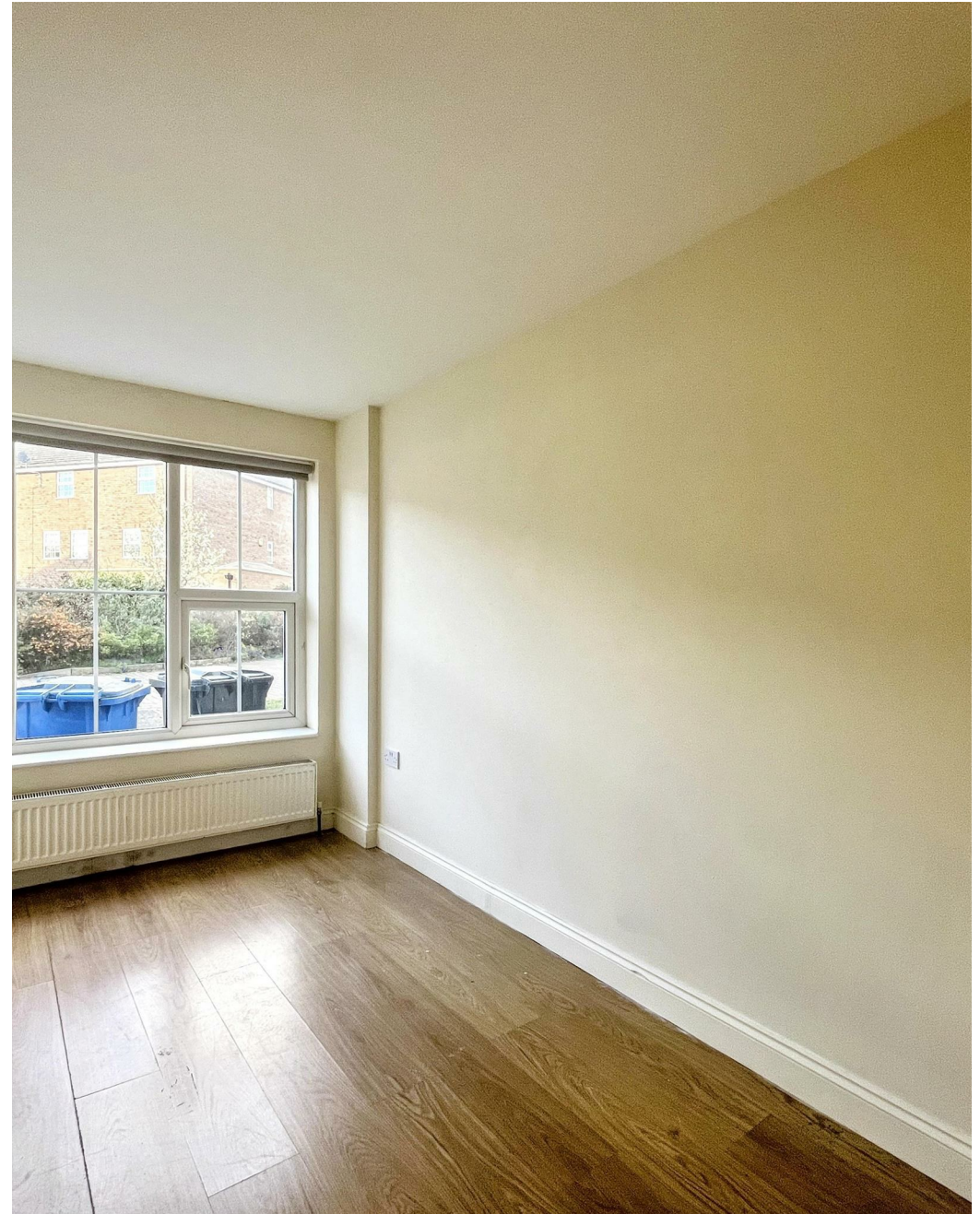


Whistefish Court, NR5  
*Guide Price £300,000*

“

We are a team of genuine individuals who hold a deep passion for both property and marketing. Collectively, we bring over 70 years of experience in the property market of Norfolk and Suffolk. Our affection for both counties runs deep, and we are enthusiastic about sharing our passion with you.

Colin McKenzie | **Branch Partner**







## THE DETAIL \_\_\_\_\_

abbotFox presents this well-positioned home tucked away within the popular Whistlefish Court development, offering modern living in a convenient Norwich location.

The property is approached via a quiet residential setting, providing a sense of privacy while remaining within easy reach of the city centre, local amenities and transport links. Internally, the accommodation is arranged to maximise both space and natural light, creating a bright and welcoming feel throughout.

The living space offers an ideal area to relax or entertain, flowing seamlessly into a well appointed kitchen designed with both practicality and style in mind. The bedroom accommodation is generous and thoughtfully laid out, complemented by a modern bathroom finished to a clean, contemporary standard.

Externally, the property benefits from well-maintained communal areas and allocated parking, making it equally appealing to owner-occupiers and investors alike.

An excellent opportunity for those seeking a low-maintenance home or a strong buy-to-let investment in a consistently popular Norwich location. Early viewing is highly recommended.



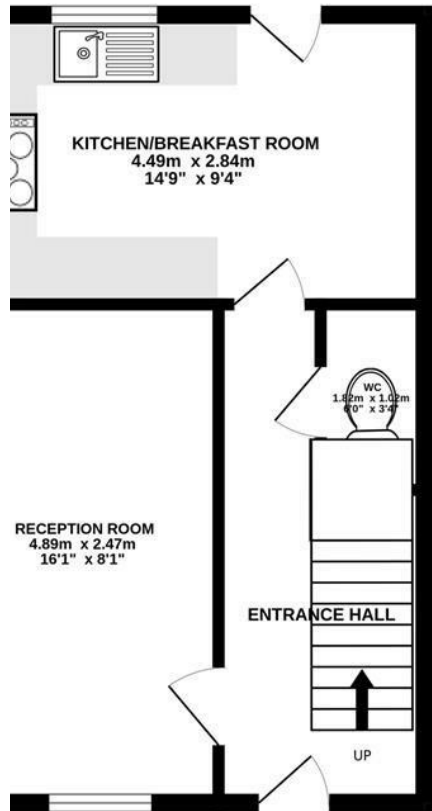




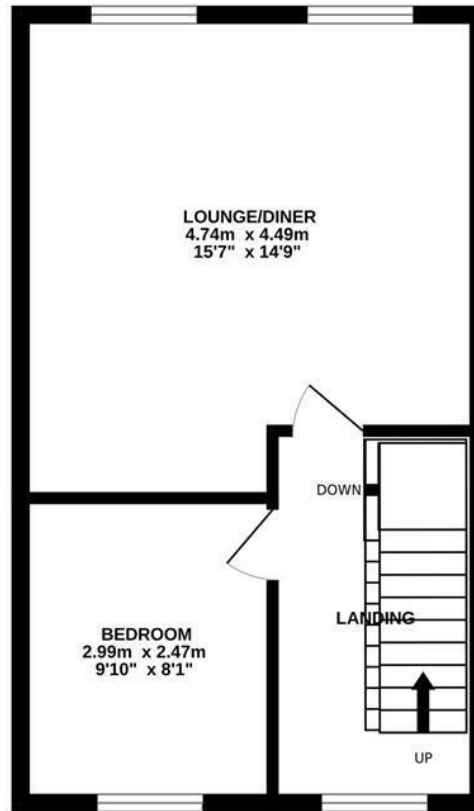
## THE HIGHLIGHTS \_\_\_\_\_

- Four Bedroom House
- Four Double Bedrooms
- Fully Furnished
- Available September 2025
- Three Storey House
- Two En-suites

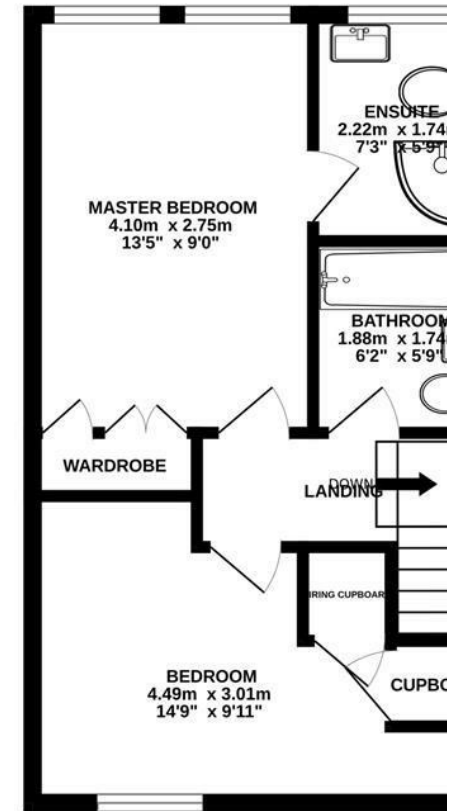
GROUND FLOOR



1ST FLOOR



2ND FLOOR



Whilst every attempt has been made to ensure the accuracy of the floorplan contained here, measurements of doors, windows, rooms and any other items are approximate and no responsibility is taken for any error, omission or mis-statement. This plan is for illustrative purposes only and should be used as such by any prospective purchaser. The services, systems and appliances shown have not been tested and no guarantee as to their operability or efficiency can be given.  
Made with Metropix ©2026

Let's talk

01603 660000

sales@abbotfox.co.uk

@abbotfox

EPC RATING - C

Disclaimer – In accordance with the Property Misdescriptions Act, the company abbotFox gives notice that all descriptions, references to condition, necessary permissions for use and other details are given in good faith and believed to be correct, but any purchaser should not rely on them as statements of fact, and must satisfy themselves by inspection or other means, as to their accuracy.