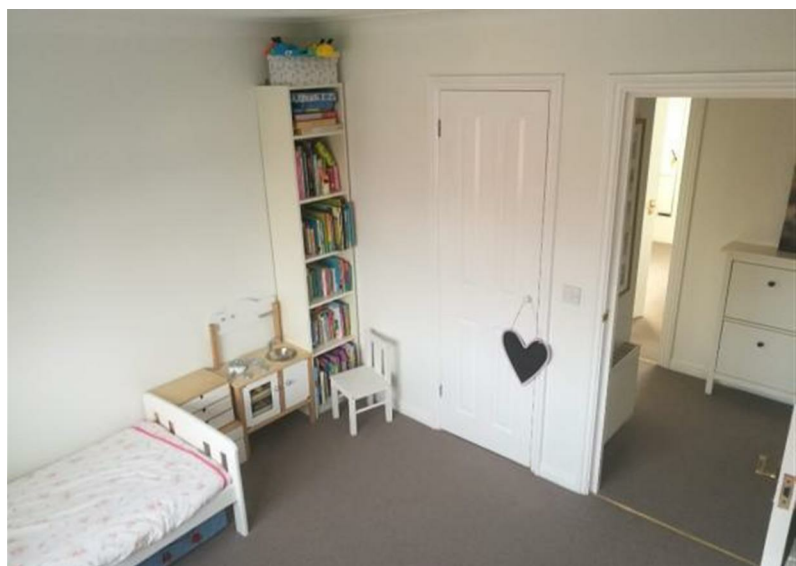
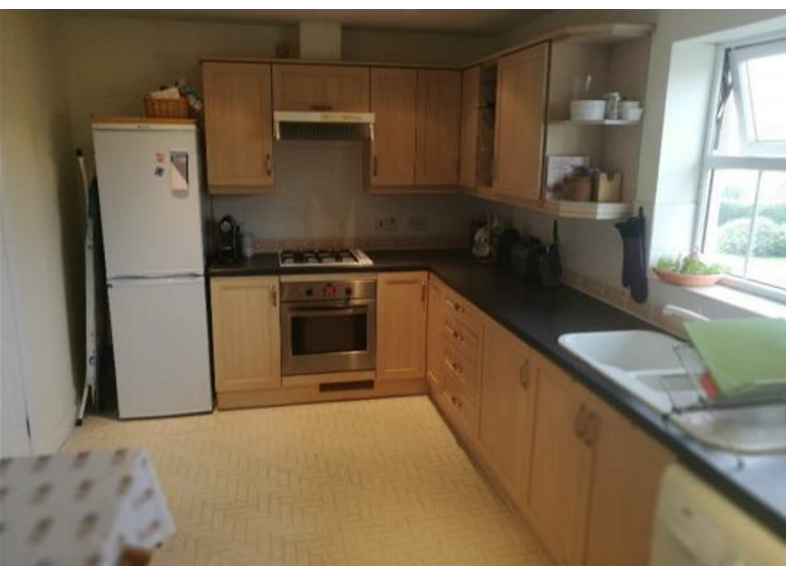


HUNT FRAME

ESTATE AGENTS

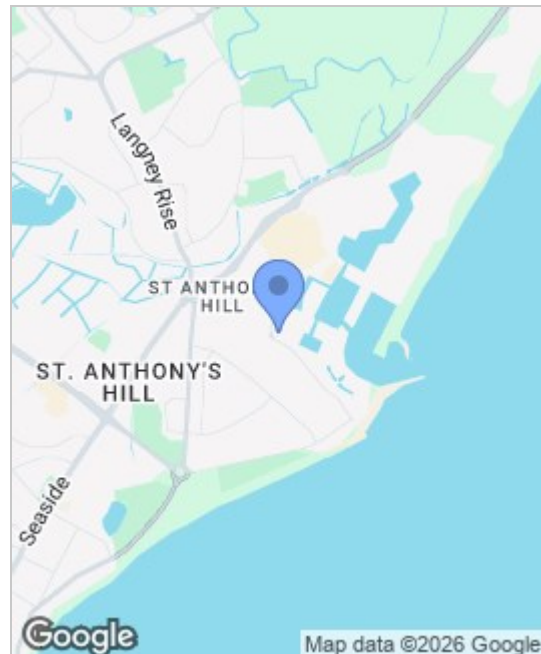


15 St. Lucia Walk

Sovereign Harbour, Eastbourne, BN23 5SY

£179,950





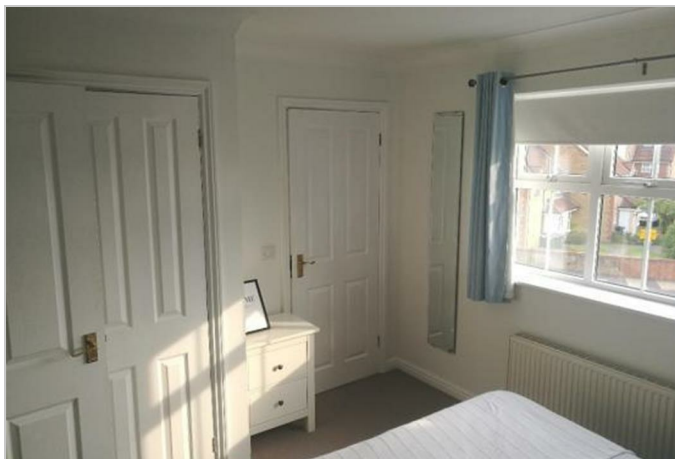
Energy Efficiency Rating		Environmental Impact (CO ₂) Rating	
Very energy efficient - lower running costs	Current	Very environmentally friendly - lower CO ₂ emissions	Current
(92 plus) A		(92 plus) A	
(81-91) B		(81-91) B	
(69-80) C		(69-80) C	
(55-68) D		(55-68) D	
(39-54) E		(39-54) E	
(21-38) F		(21-38) F	
(1-20) G		(1-20) G	
Not energy efficient - higher running costs		Not environmentally friendly - higher CO ₂ emissions	
England & Wales		England & Wales	
EU Directive 2002/91/EC		EU Directive 2002/91/EC	

Viewing

Please contact us on 01323 737373 if you wish to arrange a viewing appointment for this property or require further information.

- TWO BEDROOM FLAT
- 23' X 15' LOUNGE
- GAS CENTRAL HEATING
- EN-SUITE SHOWER ROOM
- SOUTH HARBOUR LOCATION
- DOUBLE GLAZED WINDOWS
- ALLOCATED PARKING SPACE
- IDEAL FIRST TIME BUY

A WELL PRESENTED, TWO BEDROOM, apartment situated within the SOVEREIGN HARBOUR area of Eastbourne. Comprising 23' lounge, modern kitchen, master bedroom with EN-SUITE, second bedroom and bathroom. Also benefitting from an ALLOCATED PARKING SPACE.



These particulars, whilst believed to be accurate are set out as a general outline only for guidance and do not constitute any part of an offer or contract. Intending purchasers should not rely on them as statements of representation of fact, but must satisfy themselves by inspection or otherwise as to their accuracy. No person in this firm's employment has the authority to make or give any representation or warranty in respect of the property.