



17 Northwick Road, South Oxhey

Guide Price £465,000





17 Northwick Road

South Oxhey, Watford

Offered to the market with no upper chain, this spacious three-bedroom BISF (British Iron and Steel Federation) house presents an excellent opportunity for buyers seeking a property with scope to update and extend (subject to planning permission).

Council Tax band: C

Tenure: Freehold

EPC Energy Efficiency Rating: D

EPC Environmental Impact Rating:

- BISF - NON STANDARD CONSTRUCTION
- NO UPPER CHAIN
- THREE GOOD SIZED BEDROOM'S
- TWO RECEPTION ROOM'S
- GARAGE VIA OWN DRIVEWAY
- POTENTIAL TO EXTEND TO SIDE & REAR
- IN NEED OF MODERNISATION
- GAS CENTRAL HEATING
- EPC RATING - D
- COUNCIL TAX BAND - C













Approximate Gross Internal Area
Ground Floor = 83.6 sq m / 900 sq ft
(Including Garage)
First Floor = 41.6 sq m / 448 sq ft
Total = 125.2 sq m / 1,348 sq ft

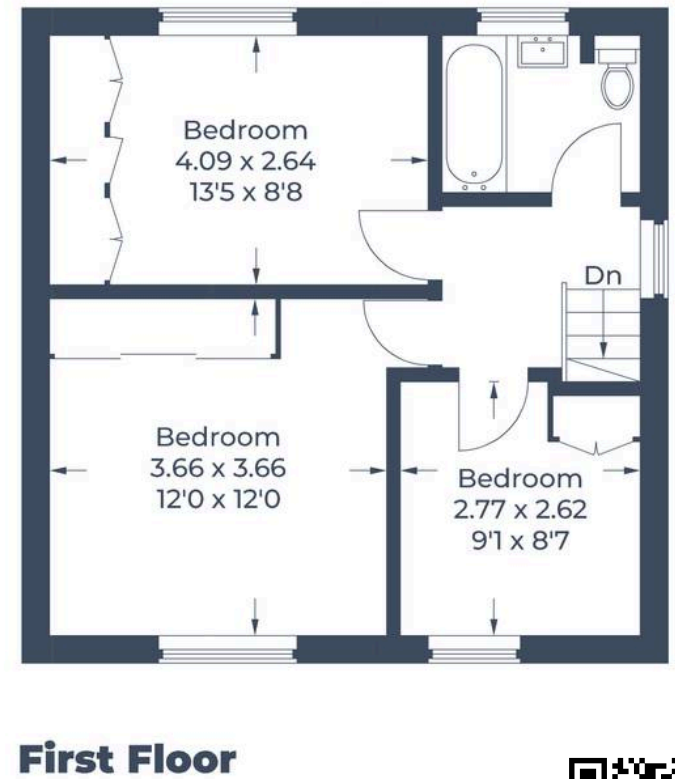
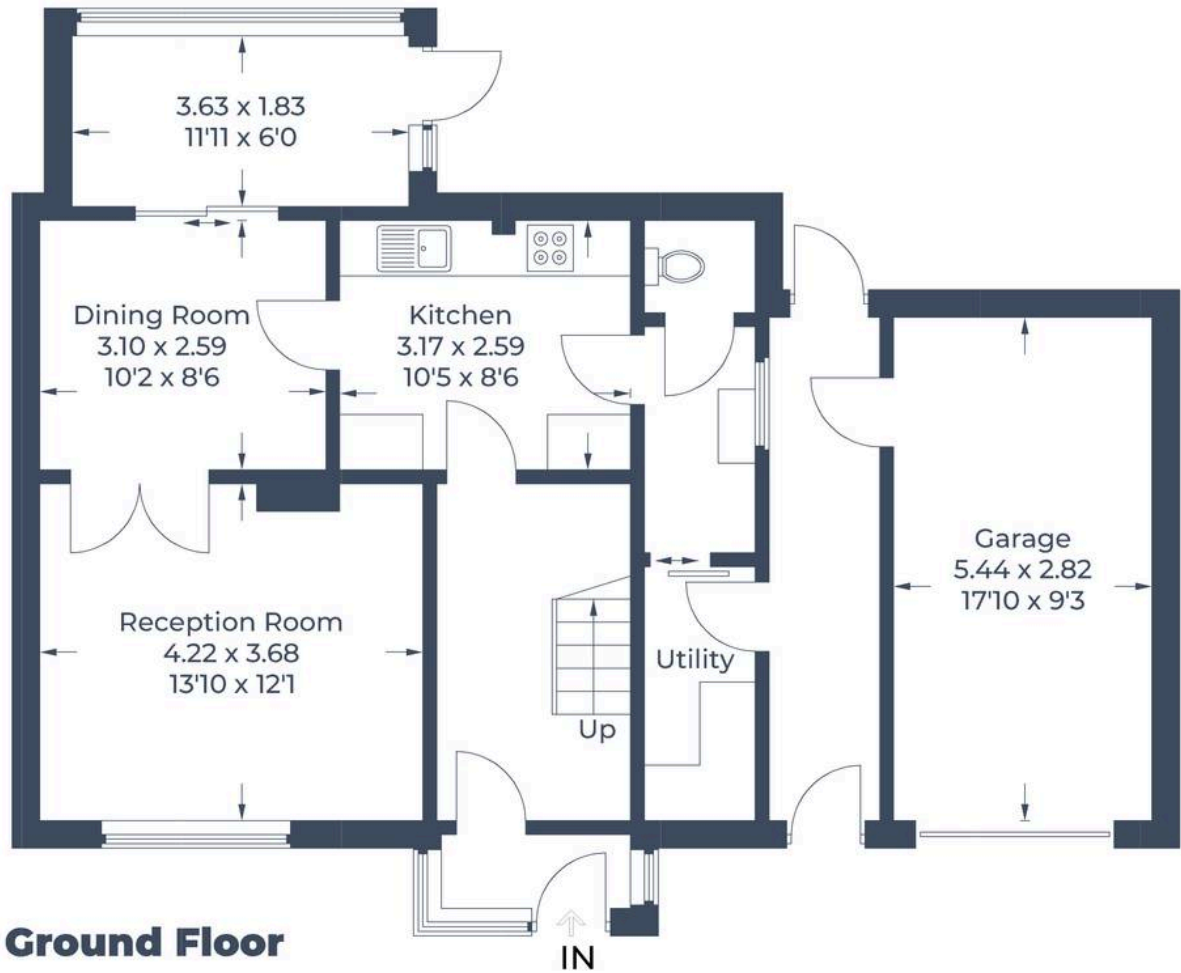


Illustration for identification purposes only,
measurements are approximate, not to scale.
© CJ Property Marketing Produced for Fairfield Estates





Fairfield – Oxhey

1 Station Approach, Watford – WD19 7DT

020 8428 0540 • rob@fairfieldstates.co.uk • fairfieldstates.co.uk/

We have prepared these particulars as a general guide of the property and they are not intended to constitute part of an offer or contract. We have not carried out a detailed survey of the property and we have not tested any apparatus, fixtures, fittings, or services. All measurements and floorplans are approximate, and photographs are for guidance only. These should not be relied upon for the purchase of carpets or any other fixtures or fittings. Lease details, service