



Elizabeth Street, Corby

**STUART  
CHARLES**  
ESTATE AGENTS

**£165,000**

Situated in the town centre of Corby and having been updated by the current owner is this THREE bedroom Maisonette. Set within walking distance to the town centre, multiple shops, Corby train station and several schools an early viewing is recommended to avoid missing out on this home. The accomodation comprises to the ground floor of an entrance hall, lounge/diner. modern kitchen, utility room and guest W.C. TO the first floor are three good sized bedrooms, a two piece bathroom and a separate W.C. Outside to the front is a large carpark while to the rear a patio area leads onto a raised decking area and further low maintenance artificial lawn. Call now to view!!.

- MODERN KITCHEN
- LARGE LOUNGE/DINER
- UTILITY ROOM WITH W.C
- WALKING DISTANCE TO TOWN
- CLOSE TO PPRIMARY AND SECONDARY SCHOOLS
- TWO PIECE BATHROOM WITH SEPERATE W.C
- THREE GOOD SIZED BEDROOMS
- PRIVATE REAR GARDEN
- WALKING DISTANCE TO TRAIN STATION AND COLLEGE
- COMMUNAL PARKING TO THE FRONT

### Entrance Hall

Entered via a double glazed door, radiator, under stairs storage area, stairs rising to first floor, doors to:

### Utility Room/W.C

Space for fridge/freezer, space for tumble dryer, double glazed window to rear elevation, wall mounted boiler, door to low level pedestal.

### Kitchen

Fitted to comprise a range of base and eye level units with a single sink and drainer, gas hob with extractor, electric oven, space for automatic washing machine, space for low level fridge, double glazed window to front elevation.

### Lounge/Diner

Double glazed window to front elevation, radiator, Tv point, telephone







point, double glazed French doors to rear elevation.

### **First Floor Landing**

Stairs rising from ground floor, airing cupboard, doors to:

### **Bedroom One**

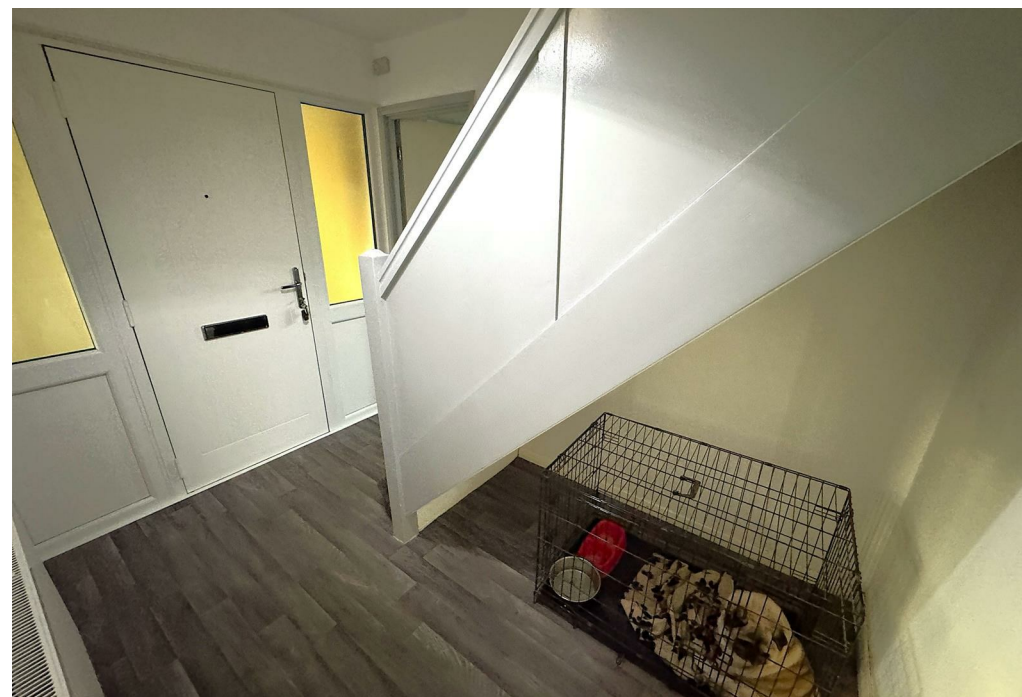
Double glazed window to front elevation, radiator, built in wardrobe.

### **Bedroom Two**

Double glazed window to front elevation, radiator, built in wardrobe.

### **Bedroom Three**

Double glazed window to rear elevation radiator.





## Bathroom

Fitted to comprise a two piece suite consisting of a mains feed waterfall shower, low level wash hand basin, radiator, double glazed window to rear elevation.

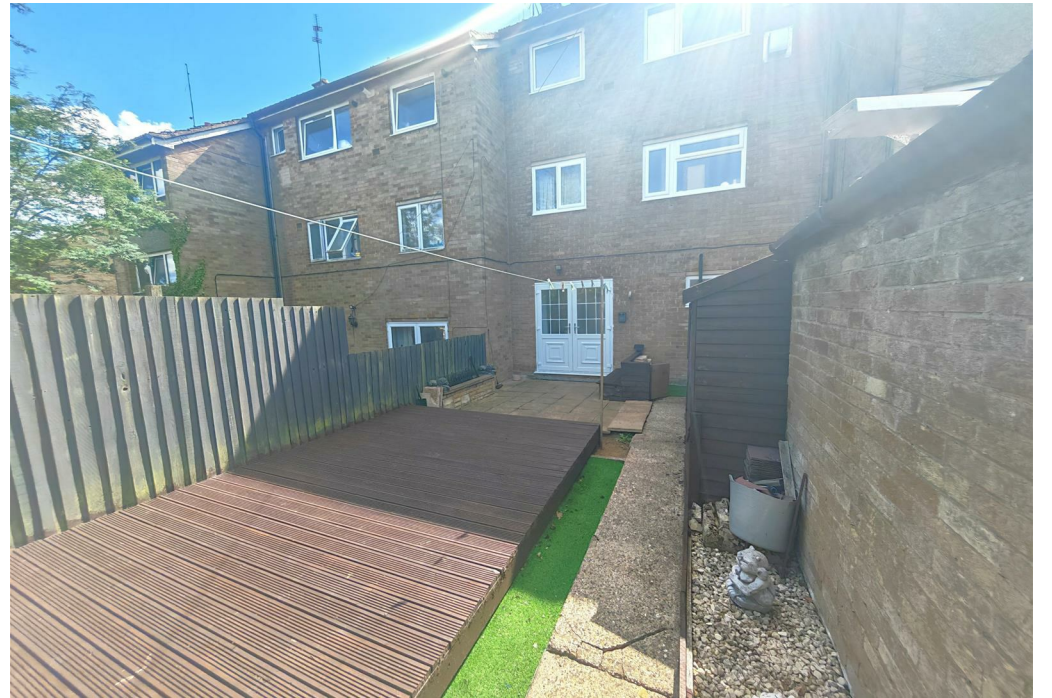
## W.C

Fitted with a low level pedestal, double glazed window to front elevation.

## Outside

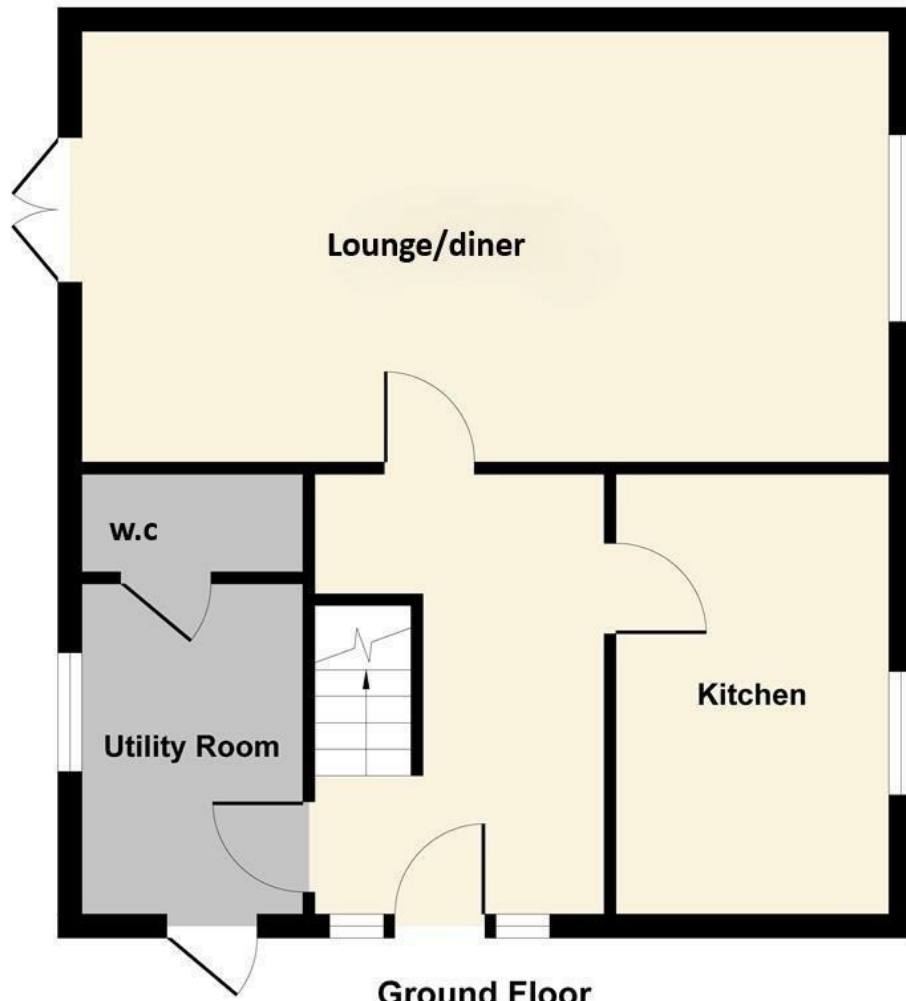




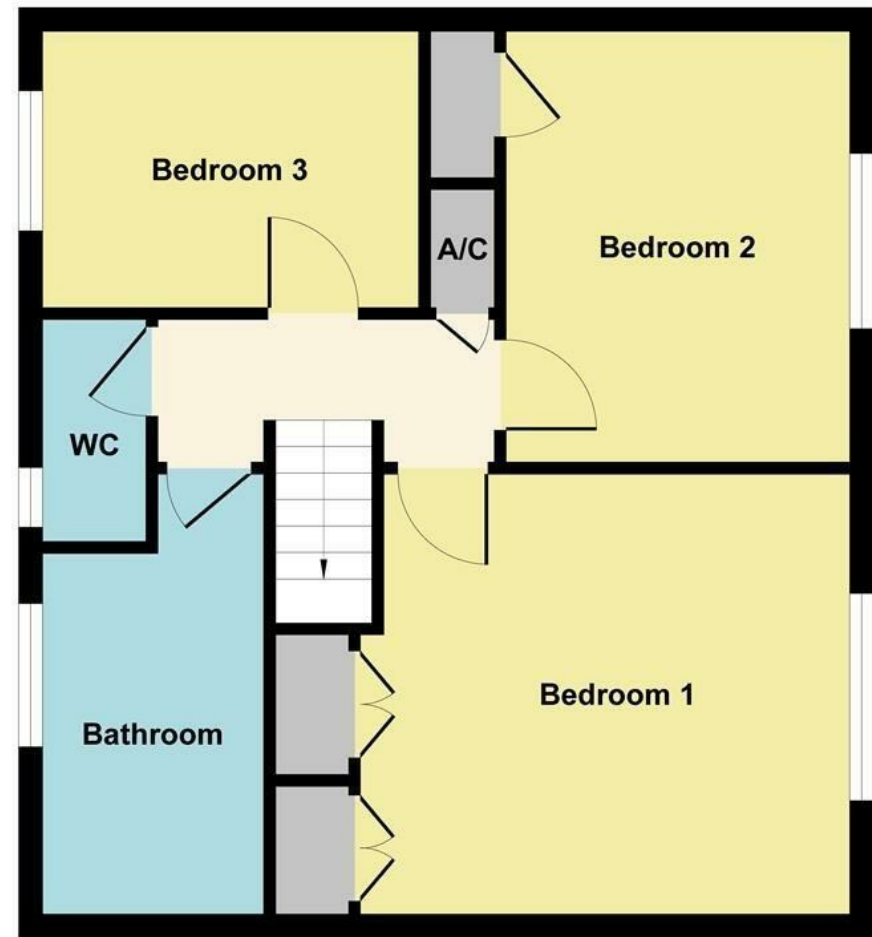




Elizabeth Street



Ground Floor



First Floor

Illustration for identification purposes only, measurements are approximate, not to scale.

Produced by Elements Property

