



Price
£425,000

Freehold

3x  1x  1x 

**Mill Lane, Coxheath,
Maidstone, Kent, ME17**

OVER 60?

Secure this property
for up to **59% less!**

Wards
Helping you move forwards



Main features

- Well presented throughout and ready to move into
- Spacious property with further potential to extend, subject to planning and consents
- Driveway for multiple cars
- Large rear garden, perfect for the summer months
- Popular village location, short walk to local shops and Coxheath Primary School

Accommodation

GROUND FLOOR

Entrance Hall
Downstairs Cloakroom
Lounge/Diner: 23'0" x 14'0" (7.02m x 4.27m)
Kitchen: 11'1" x 8'0" (3.38m x 2.44m)
Utility Room: 9'1" x 7'0" (2.77m x 2.14m)

FIRST FLOOR

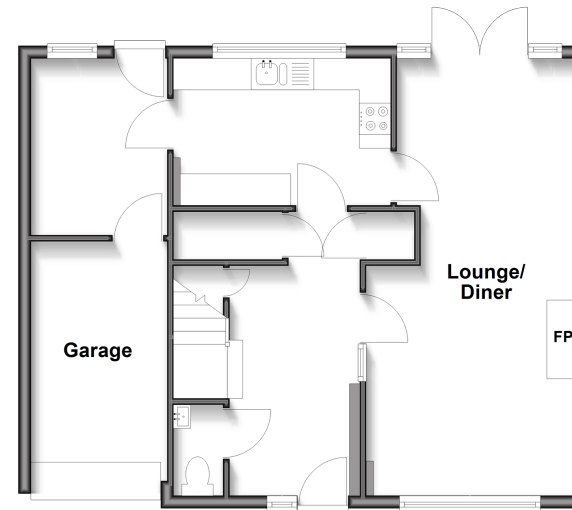
Landing
Bedroom 1: 12'1" x 11'0" (3.69m x 3.36m)
Bedroom 2: 11'0" x 8'1" (3.36m x 2.47m)
Bedroom 3: 9'1" x 7'1" (2.77m x 2.16m)
Bathroom: 9'1" x 8'0" (2.77m x 2.44m)

OUTSIDE

Garage and Driveway
Front and Rear Gardens
Shed

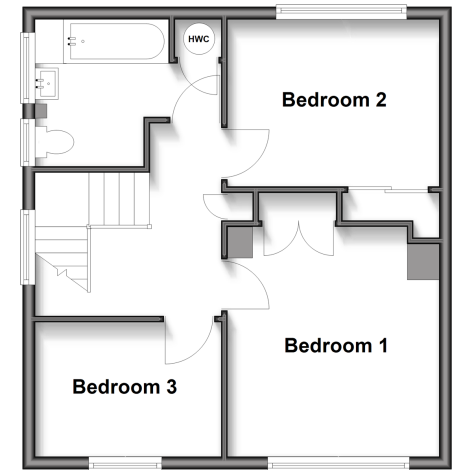
Ground Floor

Approx. 60.2 sq. metres (647.5 sq. feet)



First Floor

Approx. 44.9 sq. metres (483.2 sq. feet)



Call Loose - 01622 744067 ■ wardsof Kent.co.uk

■ Legal advice should be taken to verify fixtures/fittings, planning, alterations and/or lease details
■ Through a Homewise Home For Life Plan people aged 60+ can secure this property for up to 59% less, by purchasing a Lifetime Lease.

■ Appliances & services are untested, dimensions are approximate and floor plans are not to scale