



Pinkmove

Aberthaw Circle

£240,000

- Spacious two-bedroom home
- Modern fitted kitchen
- Separate study/home office
- Ground floor WC
- Utility/lean-to space
- Large, low-maintenance rear garden
- EPC Rating: D



2 1 2

Pinkmove

01633 746088
team@pinkmove.co.uk



About the property

This well-presented and deceptively spacious property is located in the popular residential area of Aberthaw Circle, offering a fantastic opportunity for families or those looking for versatile living space.

Upon entering, the property opens into a welcoming hallway with access to a convenient ground floor WC. To the front, there is a useful study, ideal for home working or additional reception space. The main lounge is a generous size, providing a comfortable setting for relaxing and entertaining.

To the rear, the property benefits from a modern fitted kitchen featuring a range of wall and base units, ample worktop space and integrated cooking facilities. The kitchen flows through to a useful lean-to/utility area, adding extra storage and practicality.

Upstairs, there are two well-proportioned double bedrooms, both offering excellent space for furnishings. The family bathroom is fitted with a three-piece suite including a bath with shower over.

Externally, the rear garden is a standout feature, providing a large decked area ideal for outdoor dining and entertaining, alongside a low-maintenance section and storage shed.

Situated close to local schools, shops and amenities, with easy access to main road links, this property is perfectly positioned for convenience.





Accommodation

Study

Wc

Lean To/Utility

Kitchen

Lounge

Bedroom 1

Bedroom 2

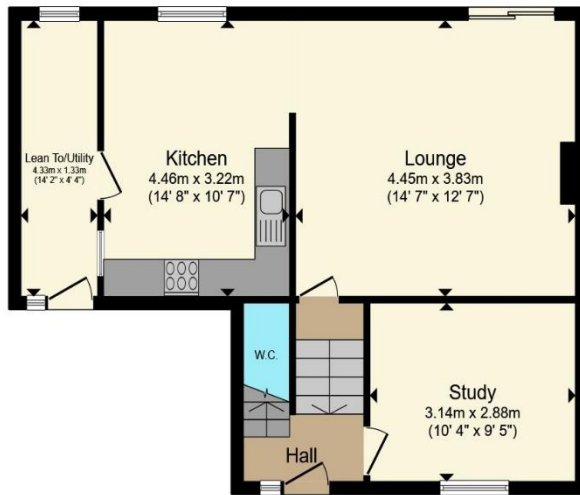
Bathroom

01633 746088

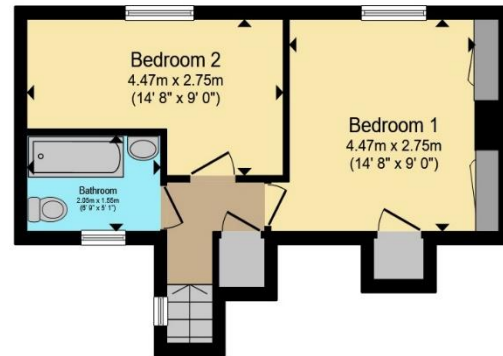
team@pinkmove.co.uk

Pinkmove

Floorplan



Ground Floor



First Floor

Total floor area 90.7 sq.m. (976 sq.ft.) approx

This floor plan is for illustrative purposes only. It is not drawn to scale. Any measurements, floor areas (including any total floor area), openings and orientation are approximate. No details are guaranteed, they cannot be relied upon for any purpose and they do not form part of any agreement. No liability is taken for any error, omission or misstatement. A party must rely upon its own inspection(s). Powered by www.localagent.com

Pinkmove

Important Information

Note while we endeavour to make our sales details accurate and reliable, if there is any point which is of particular interest to you, please contact the office and we will be pleased to confirm the position for you. We have not personally tested any apparatus, equipment, fixtures, fittings or services and cannot verify they are in working order or fit for their purposes. Nothing in these particulars is intended to indicate that carpets or curtains, furnishings or fittings, electrical goods (whether wired or not). Gas fires or light fittings or any other fixtures not expressly included form part of the property offered for sale. This computer generated Floorplan, if applicable, is intended as a general guide to the layout and design of the property. It is not to scale and should not be relied upon for dimensions. Tenure: We cannot confirm the tenure of the property as we have not had access to the legal documents. The buyer is advised to obtain verification from their solicitor or surveyor.

Peter Alan Limited is registered in England and Wales under company number 2073153, Registered Office is Cumbria House, 16-20 Hockliffe Street, Leighton Buzzard, Bedfordshire, LU7 1GN. VAT Registration Number is 500 2481 05. For activities relating to regulated mortgages and non-investment insurance contracts, Peter Alan Limited is an appointed representative of Connells Limited which is authorised and regulated by the Financial Conduct Authority. Connells Limited's Financial Services Register number is 302221. Most buy-to-let

