



St Clements Development, Bow, E3
London

Guide Price £550,000



Flat 9

Sireen Apartments, London

A simply stunning two bedroom modern apartment set on the top (3rd) floor of this smart residential building within the prestigious St. Clements development.

- Two Bed Apartment
- Two Bathrooms
- Award Winning Landmark Development
- Top Floor Corner Aspect
- Private South Facing Terrace
- Over Looking Tower Hamlets Park
- Cycle Storage & Resident Parking
- High Specification Finish
- Great Transport Links
- 789Sq. Ft.

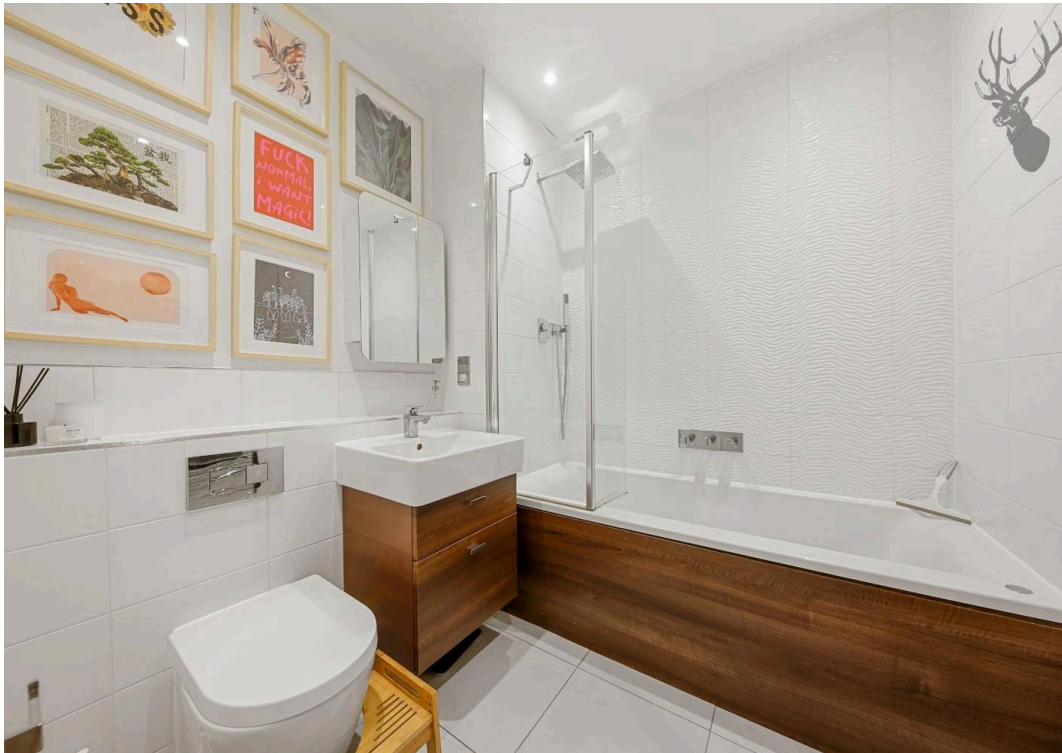


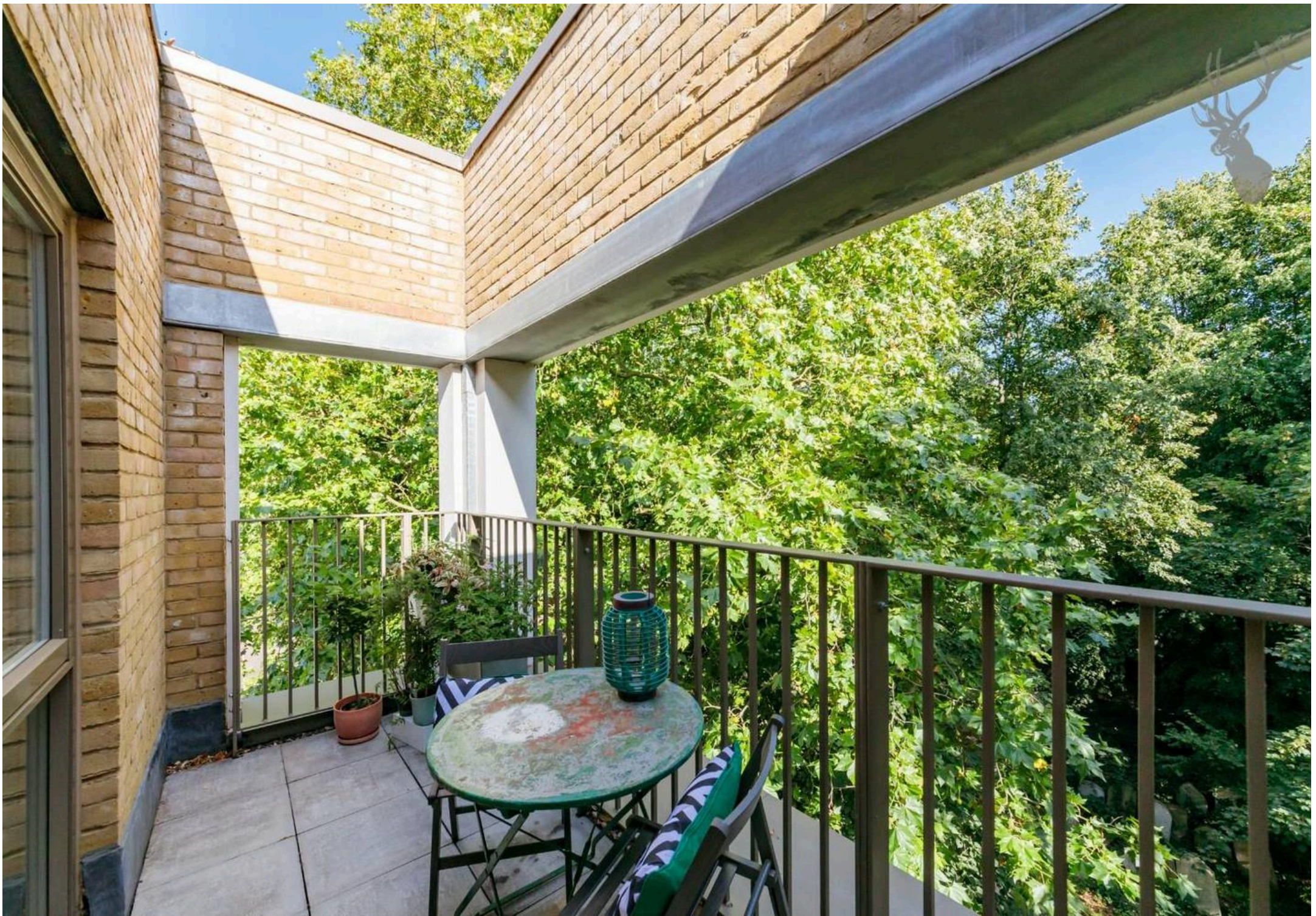
Guide Price £550,000 – £600,000

This outstanding two bedroom, two-bathroom apartment is situated on the top floor of an award-winning landmark development, St Clements, offering a rare combination of stylish modern living and tranquil surroundings. With a generous 791 sq. ft. of internal space, the property benefits from a coveted corner aspect, filling the interiors with natural light throughout the day. The thoughtfully designed layout includes a spacious open-plan living and dining area, seamlessly connected to a contemporary kitchen featuring integrated appliances and sleek cabinetry. Both bedrooms are well-proportioned, with the principal bedroom boasting an en suite shower room, while the second bathroom is finished to a high specification for guests or family. The apartment's superior finish is evident in every detail, from the quality flooring to the elegant fixtures and fittings. Additional conveniences include ample storage, secure cycle storage, and off-street parking, making this an ideal choice for professionals, couples, or small families seeking a premium lifestyle with excellent transport links nearby.

The private south-facing terrace is a true highlight, providing a peaceful retreat surrounded by lush greenery and mature landscaping. This expansive outdoor space is perfect for al fresco dining, entertaining friends, or simply unwinding with a book while enjoying the sunshine and views across the development's beautifully maintained grounds. Residents benefit from access to well-kept communal gardens, creating a sense of community and a green oasis rarely found in urban settings. The development's thoughtful design ensures privacy and security, with landscaped pathways and discreet lighting enhancing the overall ambience. Secure cycle storage and allocated off-street



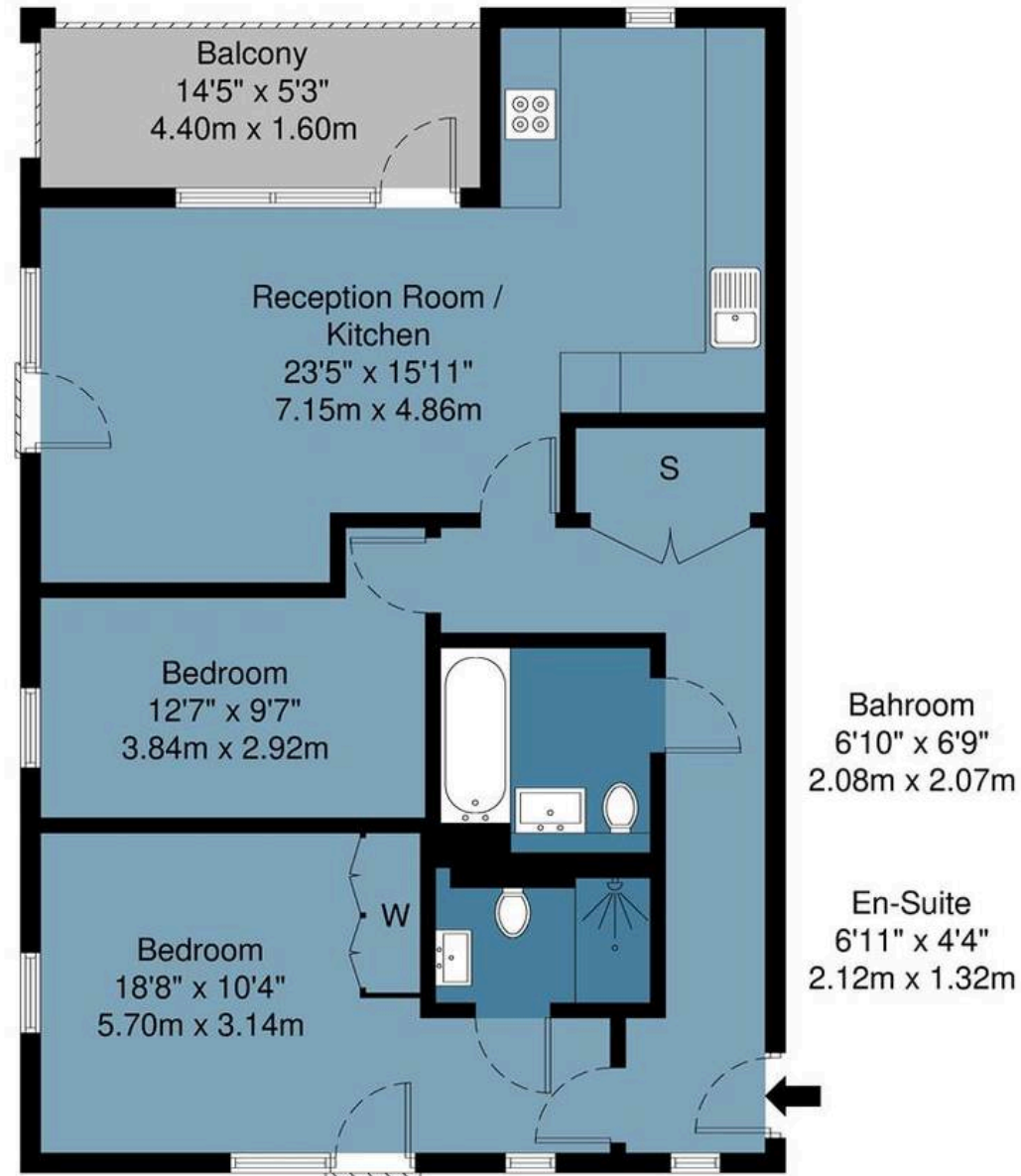




Sireen Apartments, Richard Tress Way, E3

Approx Gross Internal Area : 73.3 sq m / 789 sq ft

BUTLER & STAG



Third Floor

Measurements are approximate and for illustration purposes only. While we do not doubt the accuracy and completeness, we advise you conduct a careful independent assessment of the property to determine monetary value.

© @ Maison VUE | www.maisonvue.com

FROM EAST LONDON ENERGY TO WEST ESSEX EASE

We Make Moving Home Easy.

At Butler and Stag, we do more than just connect London to West Essex – we make the move seamless. With offices spanning from vibrant East London to the tranquillity of West Essex, we understand the nuances of each area and the journey people take between them. Our marketing goes beyond standard listings, showcasing every property with precision, creativity, and reach that others simply can't match. Coupled with an unparalleled attention to detail, from first enquiry to final move-in, we ensure every client and customer feels informed, supported, and confident. Simply put, we do the little things that make a big difference, setting us apart in every step of the property experience.



LONDON STRATFORD SOUTH WOODFORD BUCKHURST HILL LOUGHTON EPPING BEYOND

Like what you see? Let's talk

Book your **FREE** valuation now



020 8102 1236

london@butlerandstag.com

508 Roman Road, Bow, London, E3 5LU

butlerandstag.uk

IMPORTANT NOTICE - These particulars have been prepared in good faith and they are not intended to constitute part of an offer or contract. We have not performed a structural survey on this property and the services, appliances and specific fittings have not been tested. All photographs, measurements, floor plans and distances referred to are given as a guide and should not be relied upon.

BUTLER & STAG

