



Luscombe Maye

Since 1873

# Creekside, NOSS MAYO, South Devon

Guide Price £699,950

🛏️ 3 🚿 3 🚗 1



Nestled overlooking the picturesque creek in the heart of Noss Mayo, The Old Chapel presents a truly unique opportunity to acquire a beautifully converted period home, offering contemporary living within a historic shell. This immaculate property, originally built in 1870, underwent a meticulous renovation in 2006, transforming it into a luxurious retreat with impressive living space.

Upon entering, you are greeted by an expansive entrance hall, featuring elegant tiled flooring, and a striking steel staircase with oak treads and a glazed balustrade leading to the upper floor. The ground floor accommodates three generously sized bedrooms, each boasting its own en-suite facilities. A practical utility room on this level houses essential appliances and storage.

Ascending to the first floor reveals the real showstopper: a superb open-plan living room and kitchen designed for modern lifestyles and entertaining. The stunning vaulted ceiling and triple-aspect arched Gothic windows flood the space with natural light and offer captivating views over the creek, whilst maintaining a sense of privacy. The bespoke contemporary kitchen is a chef's delight, fitted with a range of high-end integrated appliances, solid black granite work surfaces, and a central island unit with a breakfast bar. French doors from the living area open onto an elevated deck, providing an idyllic spot for relaxing or alfresco dining and enjoying the tranquil creek views.

To ensure legal compliance, we require our sellers to complete a Property Information Questionnaire or provide a Material Information Guide along with the title document. If available, please scan the QR code or access the additional online material information (<https://moverly.com/sale/2Xj6RdfM7vQbfPcqqXeXCi/view>)

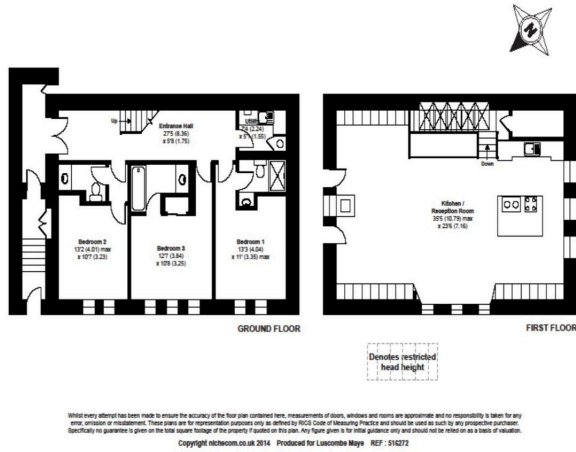
Council Tax band: Not banded Tenure: Freehold

**VIEWINGS** Strictly by prior appointment with Luscombe Maye, Newton Ferrers Office. Bespoke appointments can be arranged with adequate notice.

what3words ///replying.growl.hiker



The Old Chapel, Creekside Road, Noss Mayo, Plymouth, Devon, PL8  
 APPROX. GROSS INTERNAL FLOOR AREA 1804 SQ FT 167.6 SQ METRES (EXCLUDES RESTRICTED HEAD HEIGHT)

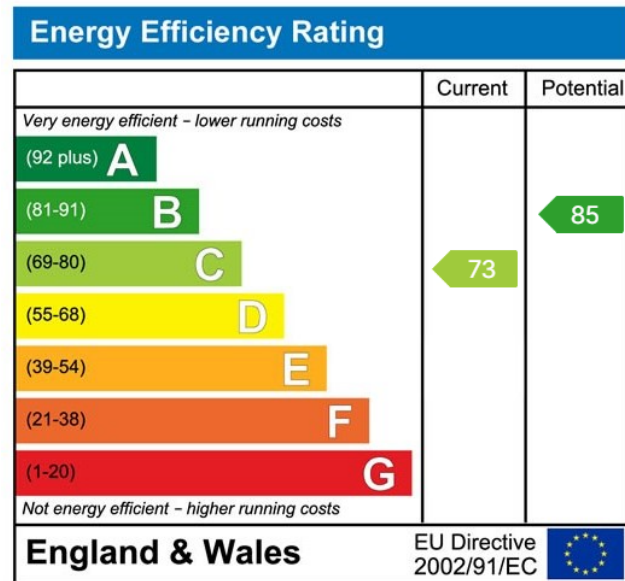


- Stunning converted methodist chapel
- Stylish kitchen with integrated appliances and central island
- Terrace with views of Noss Creek
- Established holiday rental business
- Central village location for coastal walks and pubs
- Open plan living room with vaulted ceiling
- Three en-suite bedrooms
- Immaculately presented with a high specification
- Beautiful arch windows
- No onward chain

 Luscombe Maye  
 Since 1873



Use the QR code for further "Material Information" about this home



 Luscombe Maye  
 Since 1873

**Newton Ferrers:**  
 Newton Hill, Newton Ferrers PL8 1AA  
 01752 872417  
 newtonferrers@luscombemaye.com  
[www.luscombemaye.com](http://www.luscombemaye.com)