

## Camden Park Road, NW1

£450,000

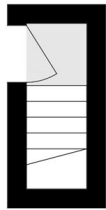
This two bedroom split level apartment has high ceilings and large windows throughout, the apartment has a share of freehold and being sold chain free.

Kings Cross and Granary Square are in close proximity offering a wonderful choice of bars and restaurants. Caledonian underground (Picadilly line) is 0.6 miles away. The area has excellent schools including Torriano Primary School and the popular Camden School for Girls.

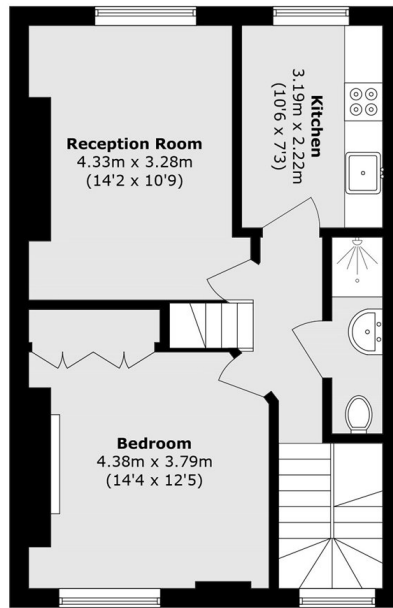
### Features

- Two Bedrooms
- Split Level
- One Bathroom
- Separate Reception Room
- Chain Free
- Share of Freehold

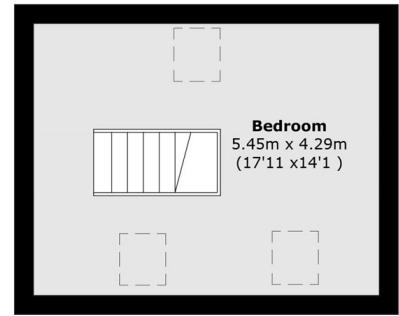
# Camden Park Road, London, NW1



**Second Floor**



**Third Floor**



**Fourth Floor**

Total area (approx.): 75.3 sq. m (810.5 sq. ft)