



198 Station Road
Burton Latimer, NN15 5NT



Simpson Ellson

Introducing Green Gables

This exceptional five-bedroom detached residence offers a striking blend of contemporary architecture and warm, natural textures—creating a home that is both visually impressive and effortlessly liveable.

At the heart of the home is a stunning principal living space, designed as a true statement of modern luxury. A bespoke linear fireplace with integrated media wall forms a beautiful focal point, complemented by symmetrical detailing and elegant curved archways that enhance flow throughout. Rich timber panelling, layered ambient lighting, and expansive full-height glazing flood the space with natural light, perfectly balancing sophistication with comfort.

The ground floor features a bright and spacious entrance hall leading to a formal dining room, dedicated office space, and an impressive kitchen/dining area with bi-fold doors opening onto the garden. A separate open-plan living area provides additional versatility for modern family living.

Upstairs, the property boasts five generously sized double bedrooms, including two stylish en-suites, a sleek family bathroom, and a beautifully designed walk-in wardrobe—all finished to an exceptional specification. Externally, the home sits on a substantial plot with off-road parking for up to five vehicles, a garage, and a private enclosed garden complete with a fire pit and seating area—ideal for entertaining.

Please note: Images shown are CGI representations of the final design. The property is now at a stage where viewings can be arranged.

Meticulously crafted throughout, this home delivers modern luxury with a calm, boutique-inspired feel.

No Onward Chain £850,000



5

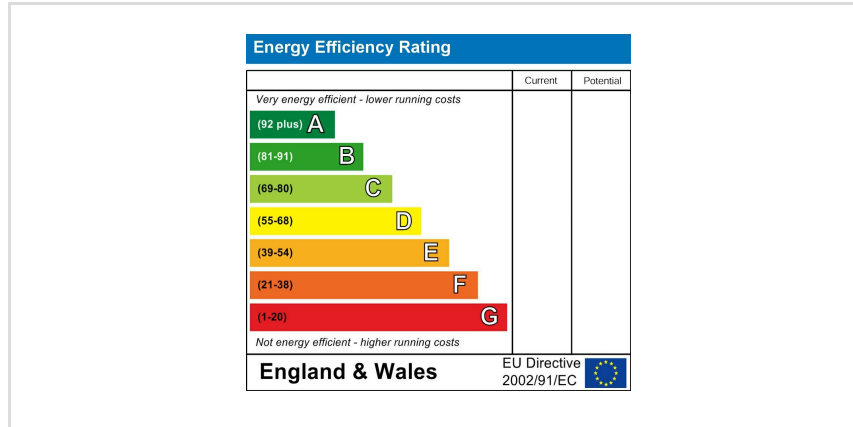
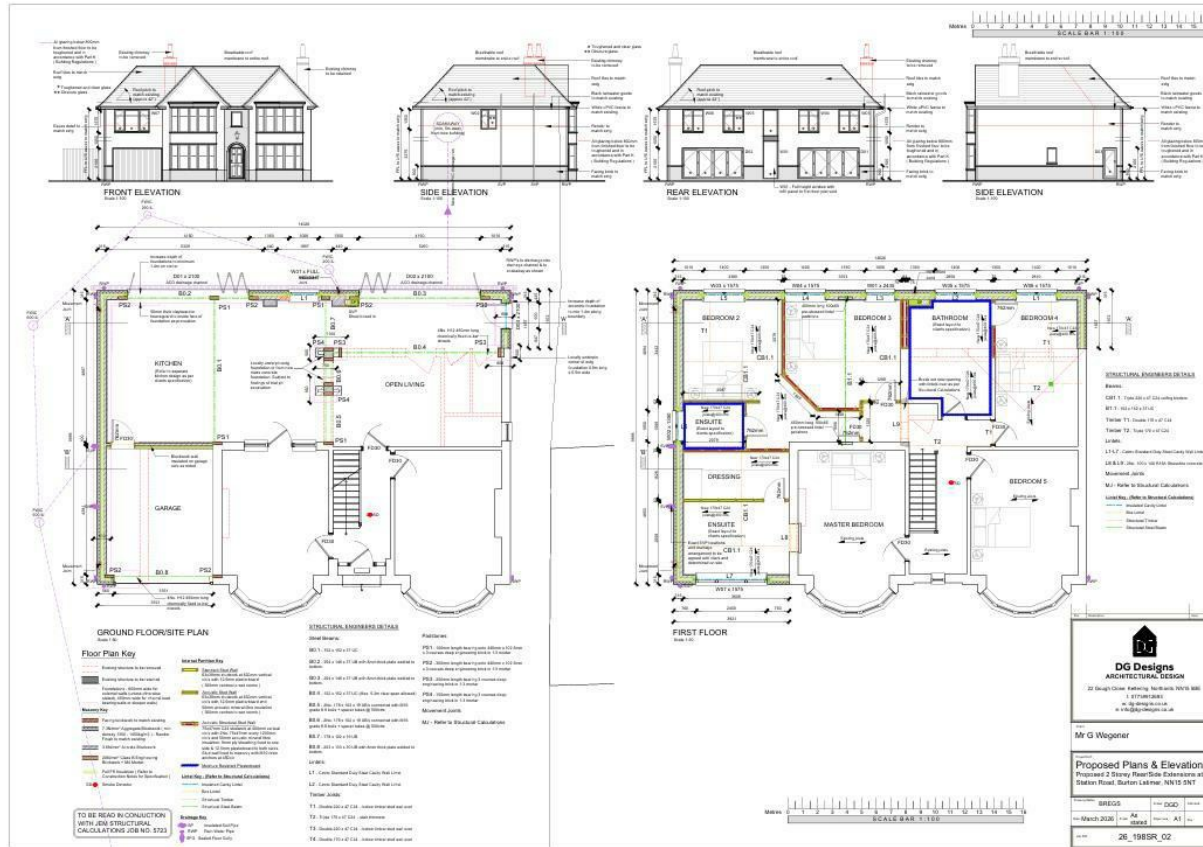


4



4







**Simpson
Ellson**

T: 01536 645960

E: rothwell@simpsonellson.co.uk



01536 645960

rothwell@simpsonellson.co.uk

<https://www.simpsonellson.co.uk>

32 High Street, Rothwell, Northants, NN14 6BQ