



Raeburn Street, SW2

£2,350 Per calendar month

This quirky split-level flat comes with two reception rooms, a semi open plan kitchen, one double bedroom, private balcony and a modern bathroom. Ideal for a professional couple.

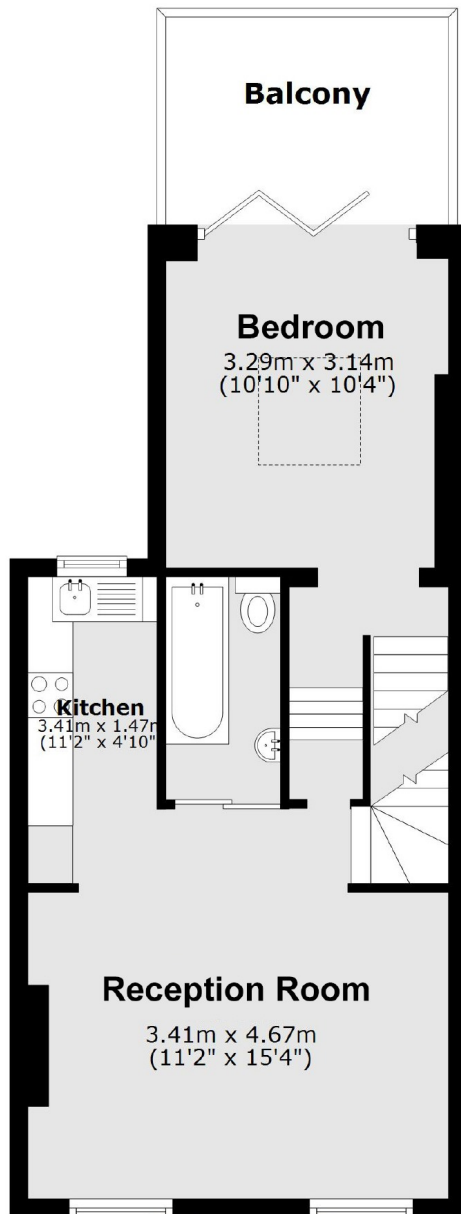
Ideally located between both Clapham High Street and Brixton High Street, surrounded by many amenities, including a Lidl Supermarket and The Blues Kitchen Bar/ Restaurant.

Features

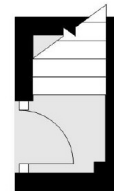
- Top Floor Flat
- Split-Level
- One Double Bedroom
- Two Reception Rooms
- Open Plan Kitchen
- Private Balcony

Raeburn Street, London, SW2

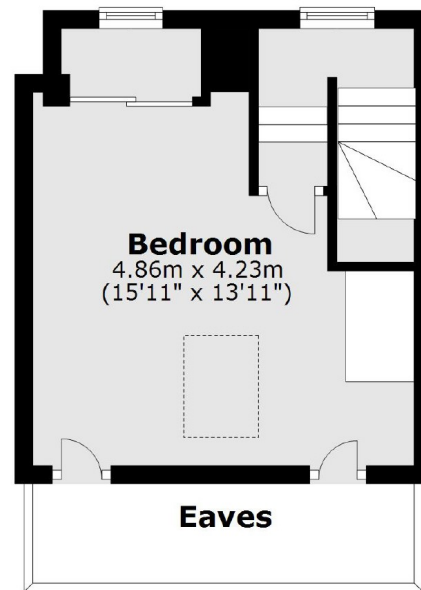
Second Floor



First Floor



Third Floor



Main area: Approx. 57.4 sq. metres (617.6 sq. feet)
Plus balconies, approx. 7.5 sq. metres (81.2 sq. feet)