



Lovelace Gardens

Surbiton, KT6 6SD

Guide Price £315,000

A stunning character apartment set in a glorious period detached house with communal gardens and parking. Located within the highly desirable and tree-lined Lovelace area, the property offers a good size open plan kitchen / living room which is bright and airy, period feature fireplace, double bedroom, modern white bathroom suite with a shower over the bath and security entrance phone. Sold with a Share of Freehold and no onward chain. Conveniently located in a pretty period property within close walking distance of Surbiton town centre with its plethora of local amenities and mainline station with its fast service to London Waterloo. No onward chain, Council tax band: C.

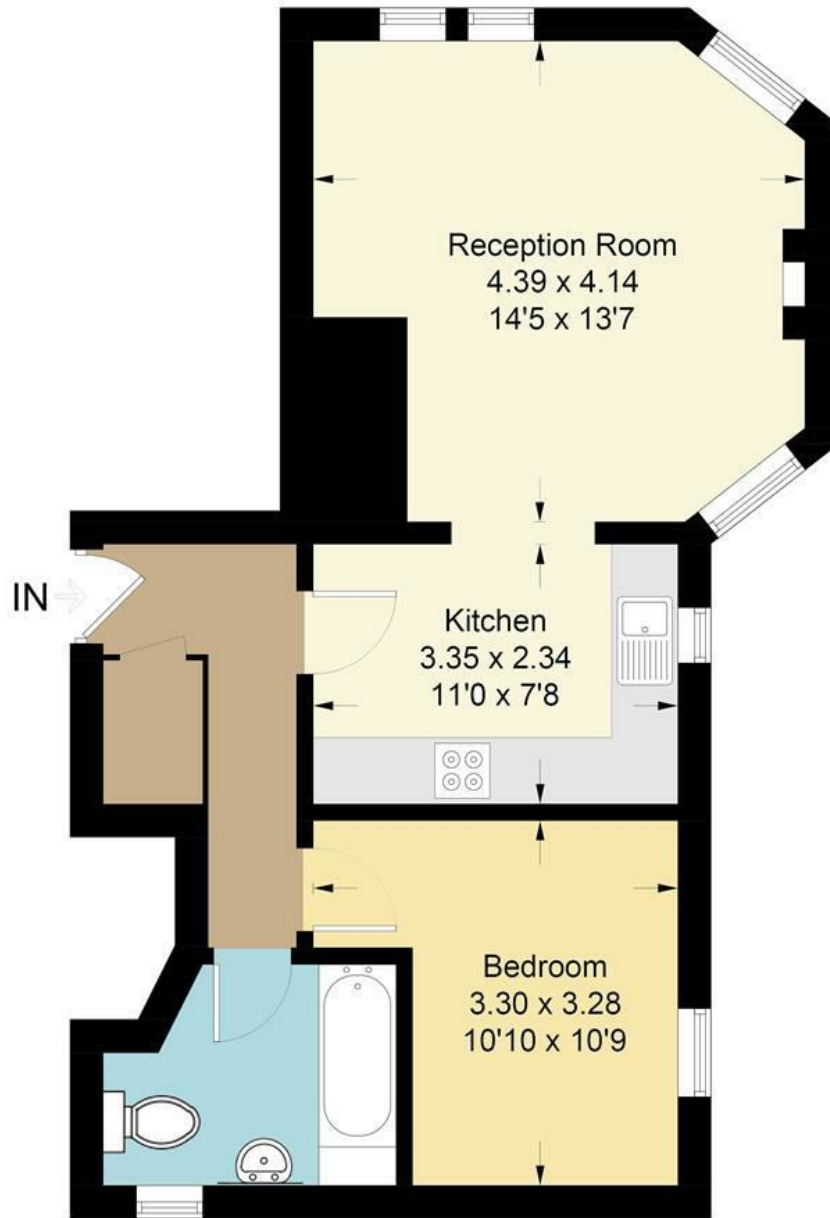
Material Information: Walls Brick, Roof Tiles. Electricity / Water / Sewerage: Mains. Heating: Gas mains. Broadband: Fibre (FTTC). Mobile Coverage: Indoor: Good/Variable, Outdoor: Good

- Beautiful Presentation
- Open Plan Kitchen / Living Room
- Bathroom
- Communal Gardens
- Character Home
- Double Bedroom
- Off Street Parking
- No Onward Chain

Floor Plan

Swallowfields

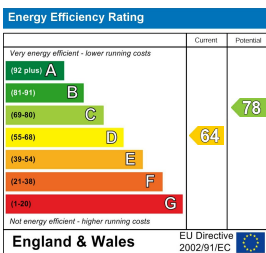
Approximate Gross Internal Area = 47.4 sq m / 510 sq ft



First Floor

Illustration for identification purposes only, measurements are approximate, not to scale. Fourlabs.co © (ID1315073)

Energy Efficiency Graph



These particulars, whilst believed to be accurate are set out as a general outline only for guidance and do not constitute any part of an offer or contract. Intending purchasers should not rely on them as statements of representation of fact, but must satisfy themselves by inspection or otherwise as to their accuracy. No person in this firm's employment has the authority to make or give any representation or warranty in respect of the property.