



ASKING PRICE

£165,000

Waterville Road

North Shields, NE29 6AY

Fresh Property welcome to the market this beautifully presented semi-detached house situated on Waterville Road, North Shields. Upon entering, you are welcomed by an entrance hall that leads to a comfortable lounge, perfect for relaxation and family gatherings. The modern dining kitchen is a highlight of the property, providing a stylish and functional space for cooking and entertaining.

The first floor boasts three bedrooms, each offering a peaceful retreat for rest and relaxation. The bathroom, complete with a WC, is conveniently located to serve the needs of the household.

Externally, the property features delightful gardens to both the front and rear, providing ample outdoor space for children to play or for hosting summer barbecues. Additionally, an allocated parking space ensures that you will never have to worry about finding a spot for your vehicle.

This home is not only beautifully presented but also offers a perfect blend of comfort and practicality, making it an excellent choice for families seeking a welcoming environment.

3



1



1



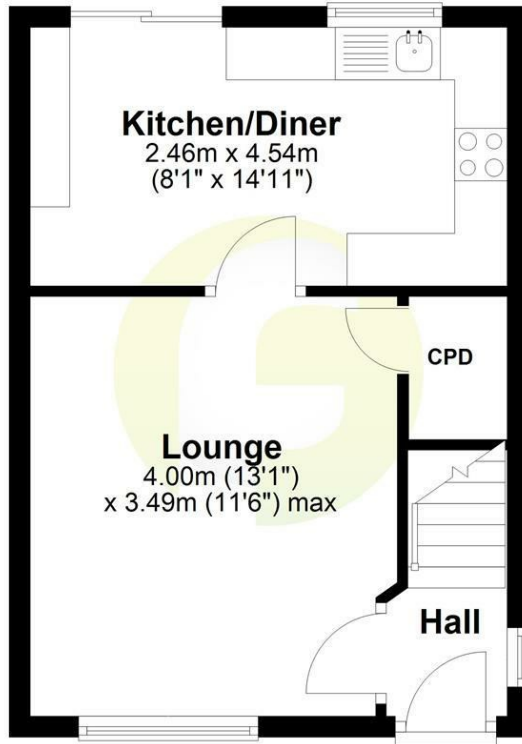






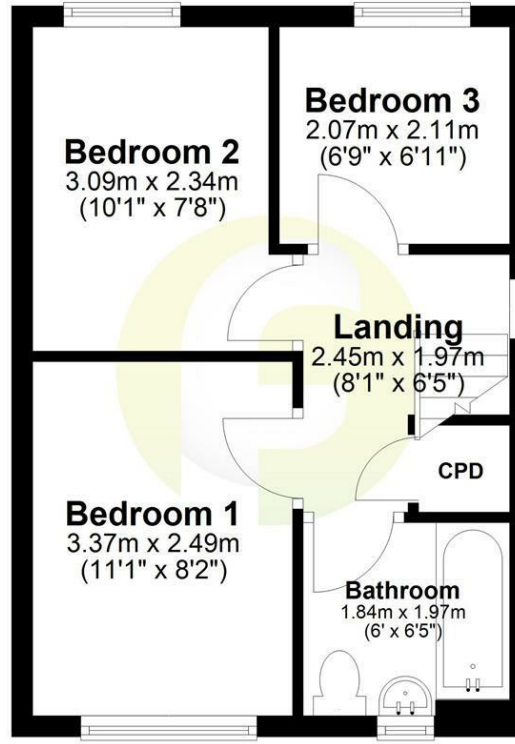
Ground Floor

Approx. 29.8 sq. metres (320.5 sq. feet)



First Floor

Approx. 29.9 sq. metres (322.3 sq. feet)



Total area: approx. 59.7 sq. metres (642.7 sq. feet)

LOCAL AUTHORITY

North tyneside

TENURE

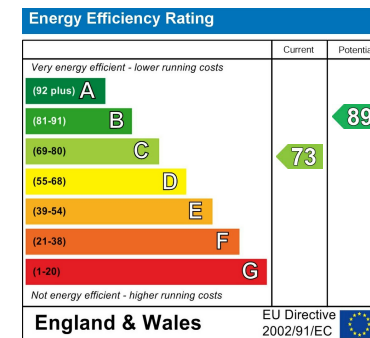
Leasehold

COUNCIL TAX BAND

A

VIEWINGS

By prior appointment only



Agents Note: Whilst every care has been taken to prepare these particulars, they are for guidance purposes only. All measurements are approximate and are for general guidance purposes only and whilst every care has been taken to ensure their accuracy, they should not be relied upon and potential buyers/tenants are advised to recheck the measurements



OFFICE ADDRESS

63 Church Way
North Shields
Tyne & Wear
NE29 0AE

OFFICE DETAILS

0191 257 6823
hello@fresh.property
www.freshpropertycentre.co.uk