



Curlew Drive, Brownhills

Offers Over £225,000

3 2 1



A consistently spacious and very well presented three bedroom modern family home in Brownhills, offering superb value for money.

Situated on a quiet residential road, this impressive property in Curlew Drive enjoys a quiet residential setting with excellent access to local amenities, schools, and transport links. Ideal for families or commuters, it offers a blend of suburban tranquility and convenience, with nearby green spaces and easy routes to Walsall town centre and the M6.

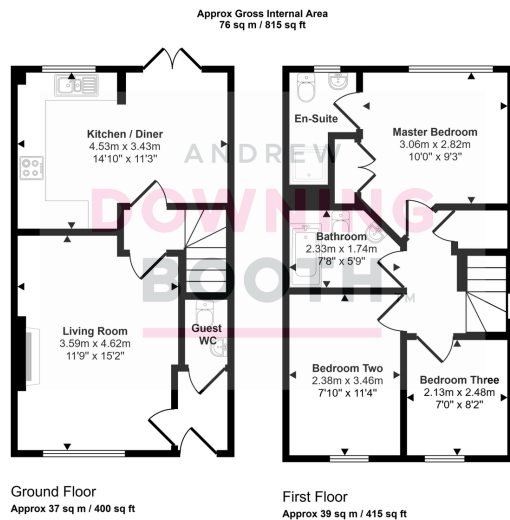
The accommodation boasts impressive dimensions throughout, with the ground floor consisting of a beautifully appointed living room, fabulous full width kitchen/diner, and guest WC, whilst the first floor is home to all three bedrooms and the attractive family bathroom, with the Master complete with built-in wardrobes and stunning en-suite shower room. A charming frontage is complimented by an idyllic landscaped rear garden and privately allocated car parking space to make up the property's exterior.

This property has something for everyone. We must advise booking in a viewing at your first opportunity in order to avoid disappointment.

Note

Please note, there is an annual management fee to be paid for the maintenance of the communal / shared area to the rear of the property, which costs £271 every six months.





This floorplan is only for illustrative purposes and is not to scale. Measurements of rooms, doors, windows, and any items are approximate and no responsibility is taken for any error, omission or mis-statement. Icons of items such as bathroom suites are representations only and may not look like the real items. Made with Made Snappy 360.

- Three Bedroom End-Terrace Family Home
- Impressively Master Bedroom With En-Suite
- Very Attractive Living Room
- Consistently Impressive Room Sizes
- EPC Rating: C
- Beautifully Presented Throughout
- Charming & Private Mature Rear Garden
- Superb Contemporary Kitchen / Diner
- Convenient Location With Access To Amenities
- Council Tax Band: C

