



Guide Price
£450,000

Freehold

3x  1x  1x 

**Treetops, Tonbridge,
Kent, TN9**

OVER 60?

Secure this property
for up to **59% less!**

Wards
Helping you move forwards



Main features

- **Bright and spacious family home situated in a quiet cul-de-sac**
- **Garage and off road parking**
- **Good sized garden with patio area**
- **Walking distance in to Tonbridge High Street and station**
- **In the catchment area for popular schools**

Accommodation

GROUND FLOOR

Hallway
Cloakroom
Lounge: 14'1 x 12'3 (4.30m x 3.74m)
Kitchen/Diner: 15'7 x 10'5 (4.75m x 3.18m)
Conservatory: 10'4 x 6'3 (3.15m x 1.91m)

FIRST FLOOR

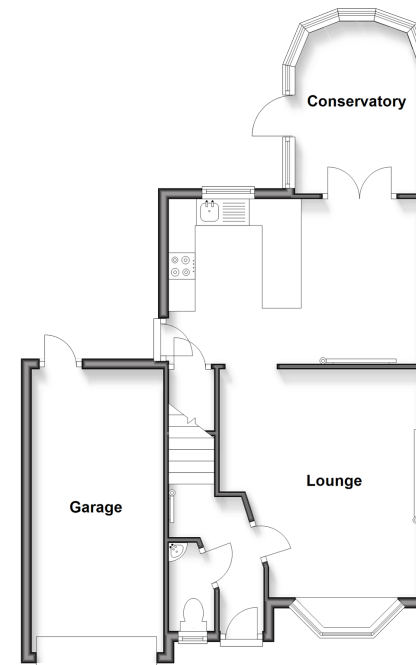
Landing
Bedroom 1: 12'7 x 8'2 (3.84m x 2.49m)
Bedroom 2: 11'1 x 8'2 (3.38m x 2.49m)
Bedroom 3: 9'4 x 7'2 (2.85m x 2.19m)
Bathroom

OUTSIDE

Garage
Off Road Parking
Front & Rear Gardens

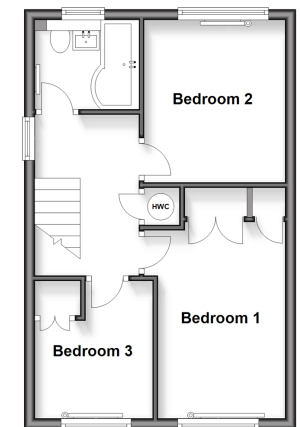
Ground Floor

Approx. 58.1 sq. metres (625.5 sq. feet)



First Floor

Approx. 35.5 sq. metres (382.3 sq. feet)



Call Tonbridge - 01732 770755 ■ wardsofkent.co.uk

■ Legal advice should be taken to verify fixtures/fittings, planning, alterations and/or lease details
■ Through a Homewise Home For Life Plan people aged 60+ can secure this property for up to 50% less, by purchasing a Lifetime Lease.

■ Appliances & services are untested, dimensions are approximate and floor plans are not to scale



14134416/20251119/NR/NR