



sparks ellison

49 Stratford Place, Eastleigh, SO50 4NB

£200,000

Located in Stratford Place, Eastleigh, this well-presented one-bedroom semi-detached house offers modern and practical living. The property features a contemporary interior, including a comfortable bedroom, a modern bathroom, and a well-arranged living space. Externally, there is a private patio garden, suitable for outdoor use, along with an allocated parking space. The property is conveniently positioned close to Eastleigh town centre, with easy access to local shops, amenities, and transport links. An ideal option for a first-time buyer or those looking to downsize.

ACCOMMODATION

Ground Floor

Entrance hall:

Storage cupboard.

Sitting room:

14'11" x 11'1" (4.54m x 3.39m) Bay window and stairs to first floor.

Kitchen:

12'4" x 7'3" (3.75m x 2.21m) Range of units including gas hob with electric oven, space for washing machine and fridge freezer. Storage space under the stairs.

First Floor

Landing:

Bedroom 1:

12'4" x 11'1" (3.77m x 3.39m) Built in wardrobes

Bathroom:

White suite comprising bath with shower over, WC, wash basin with cupboard under.

OUTSIDE

Front:

Patio area with fencing as a boundary

Parking:

Allocated parking for one car.

OTHER INFORMATION

Tenure:

Freehold

Approximate Age:

1990's

Approximate Area:

491 sq ft / 45.5 sq m

Sellers Position:

No forward chain

Heating:

Gas central heating

Windows:

UPVC double glazing

Infant/Junior School:

Shakespeare Infant School / Shakespeare Junior School

Secondary School:

Crestwood Community School

Local Council:

Eastleigh Borough Council - 02380 688000

Council Tax:

Band B

Agents Note:

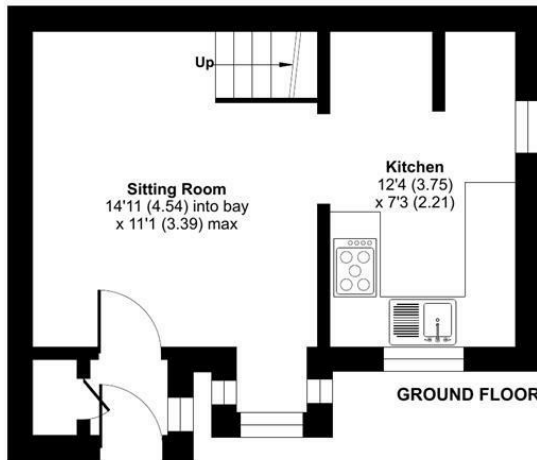
If you have an offer accepted on a property we will need to, by law, conduct Anti Money Laundering Checks. There is a charge of £60 including vat for these checks regardless of the number of buyers involved.



Ground Floor = 258 sq ft / 23.9 sq m
 First Floor = 233 sq ft / 21.6 sq m
 Total = 491 sq ft / 45.5 sq m
 For identification only - Not to scale



FIRST FLOOR



GROUND FLOOR



Energy Efficiency Rating		Current	Potential
Very energy efficient - lower running costs			
(92 plus) A			90
(81-91) B			
(69-80) C		72	
(55-68) D			
(39-54) E			
(21-38) F			
(1-20) G			
Not energy efficient - higher running costs			
England & Wales		EU Directive 2002/91/EC	

Floor plan produced in accordance with RICS Property Measurement 2nd Edition, Incorporating International Property Measurement Standards (IPMS2 Residential). © nrichcom 2026. Produced for Sparks Ellison. REF: 1431136

94 Winchester Road, Chandler's Ford, Hampshire, SO53 2GJ

Sales: t: 02380 255333 e: property@sparksellison.co.uk

Lettings: t: 02380 018518 e: lettings@sparksellison.co.uk

While we endeavour to make our sales particulars fair, accurate and reliable, they are only a general guide to the property and, accordingly, if there is any point which is of particular importance to you please contact the office and we will be pleased to check it for you, especially if you are contemplating travelling some distance to view the property. These approximate room sizes are only intended as general guidance. You must verify the dimensions carefully before ordering carpets or any built in furniture. Please note we have not tested the services or any of the equipment or appliances in this property, accordingly we strongly advise prospective buyers to commission their own survey or service report before finalising their offer to purchase. These particulars are issued in good faith but do not constitute representations of fact or form part of any offer or contract. The matters referred to in these particulars should be independently verified by prospective buyers or tenants. Neither Sparks Ellison nor any of its employees or agents has any authority to make or give any representation or warranty whatever in relation to this property. Your home is at risk if you do not keep up repayments on a mortgage or other loan secured on it. Written quotations available on request. All loans secured on property. Life assurance usually required.



